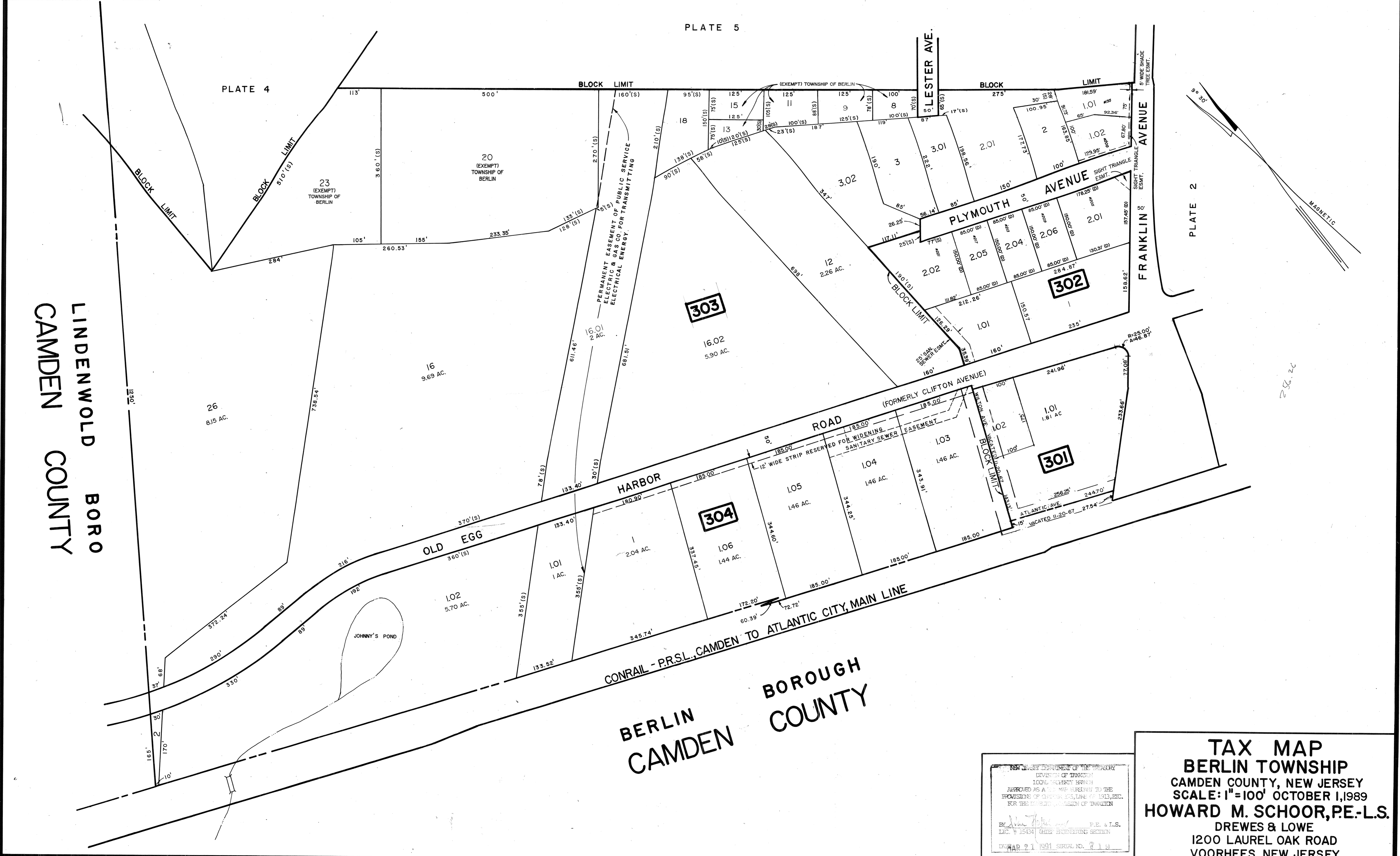


REVISIONS		
DATE	NAME	NUMBER
4/1/90	HOWARD M. SCHOOR	14551
4/1/97	CHARLES J. RIEBEL JR.	29286
1/18/99	CHARLES J. RIEBEL, JR.	29286
1/7/00	CHARLES J. RIEBEL JR.	29286
7/1/01	CHARLES J. RIEBEL JR.	29286
12/5/01	CHARLES J. RIEBEL JR.	29286
3/24/05	CHARLES J. RIEBEL JR.	29286
8/1/05	CHARLES J. RIEBEL JR.	29286



LINDENWOLD BORO
CAMDEN COUNTY

BERLIN CAMDEN
BOROUGH COUNTY

NEW JERSEY DEPARTMENT OF THE TREASURY
DIVISION OF TAXATION
LOCAL GOVERNMENT TAX MAPS
APPROVED AS A TRUE AND CORRECT REPRESENTATION OF THE
PROCESSED BY ELECTRONIC MEANS, IN ACCORDANCE WITH N.J.A.C. 17:27, ETC.
FOR THE DISTRICT OF BERLIN TOWNSHIP

By *Howard M. Schoor* P.E. & L.S.
LIC. # 15434 CHIEF ENGINEERING SECTION

DATE: APR 21 1991 SERIAL NO. 2118

TAX MAP
BERLIN TOWNSHIP
CAMDEN COUNTY, NEW JERSEY
SCALE: 1"=100' OCTOBER 1, 1989
HOWARD M. SCHOOR, P.E.-L.S.
DREWES & LOWE
1200 LAUREL OAK ROAD
VOORHEES, NEW JERSEY