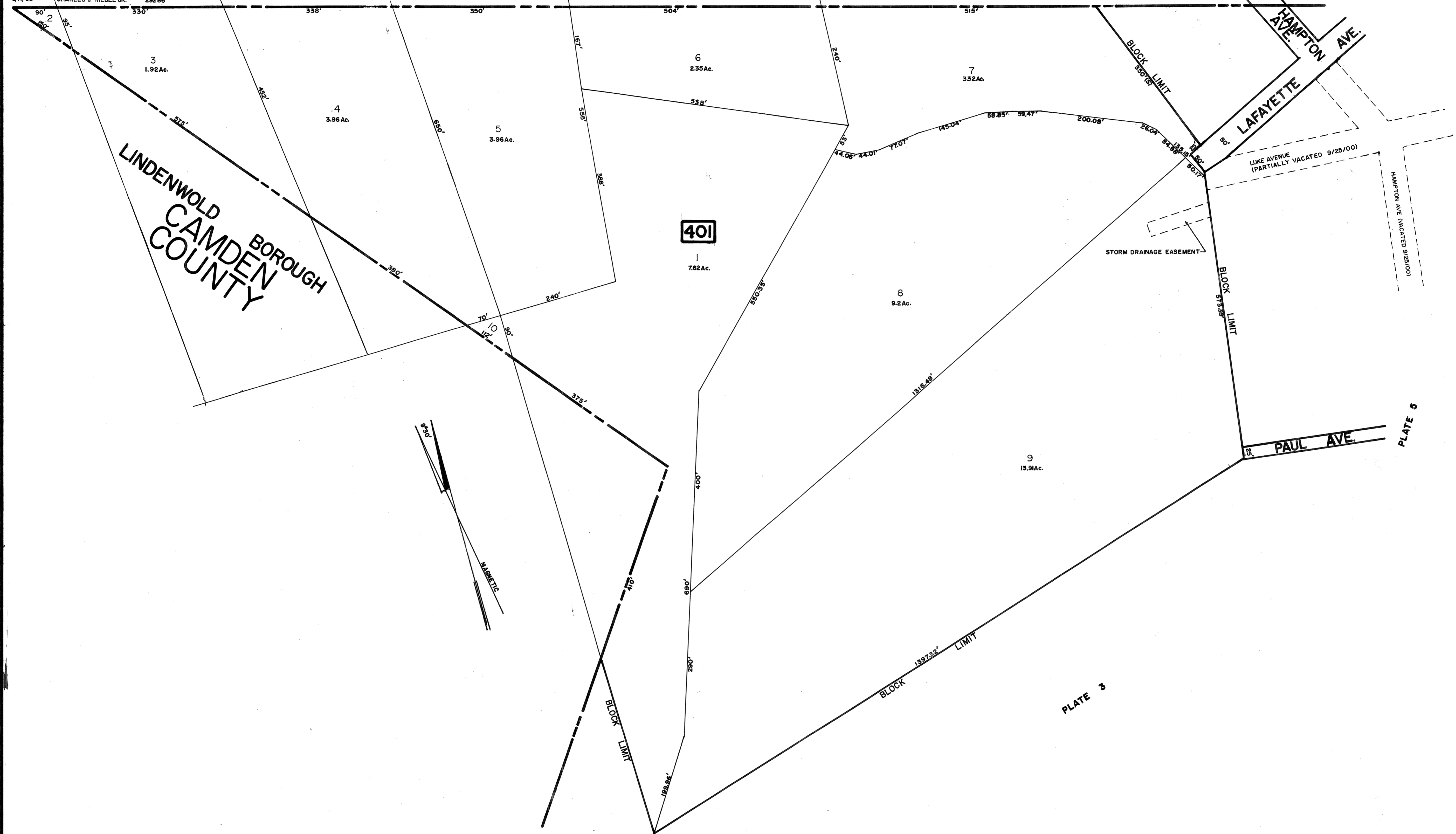


REVISIONS		
DATE	NAME	NUMBER
4/1/97	CHARLES J. RIEBEL JR.	29286
1/18/99	CHARLES J. RIEBEL JR.	29286
1/7/00	CHARLES J. RIEBEL JR.	29286
7/11/01	CHARLES J. RIEBEL JR.	29286
9/15/02	CHARLES J. RIEBEL JR.	29286
3/24/05	CHARLES J. RIEBEL JR.	29286
8/11/05	CHARLES J. RIEBEL JR.	29286

VOORHEES TOWNSHIP

CAMDEN COUNTY



LINDENWOLD
CAMDEN BOROUGH
COUNTY

NEW JERSEY DEPARTMENT OF THE TREASURY
DIVISION OF TAXATION
LOCAL EXERCISE BRANCH
APPROVED AS TO FORM PRESENT TO THE
PROVISIONS OF CHAPTER 125, LAWS OF 1913, ETC.
FOR THE DEPARTMENT OF TAXATION

By *Howard M. Schoor* P.E. & L.S.
LIC. # 15434 CHIEF ENGINEERING SECTION

DRAWN 2.1.1991 SERIAL NO. 719

TAX MAP
BERLIN TOWNSHIP
CAMDEN COUNTY NEW JERSEY
SCALE: 1"=100' OCTOBER 1, 1989
HOWARD M. SCHOOR P.E.-L.S.
DREWES & LOWE
1200 LAUREL OAK ROAD
VOORHEES, NEW JERSEY