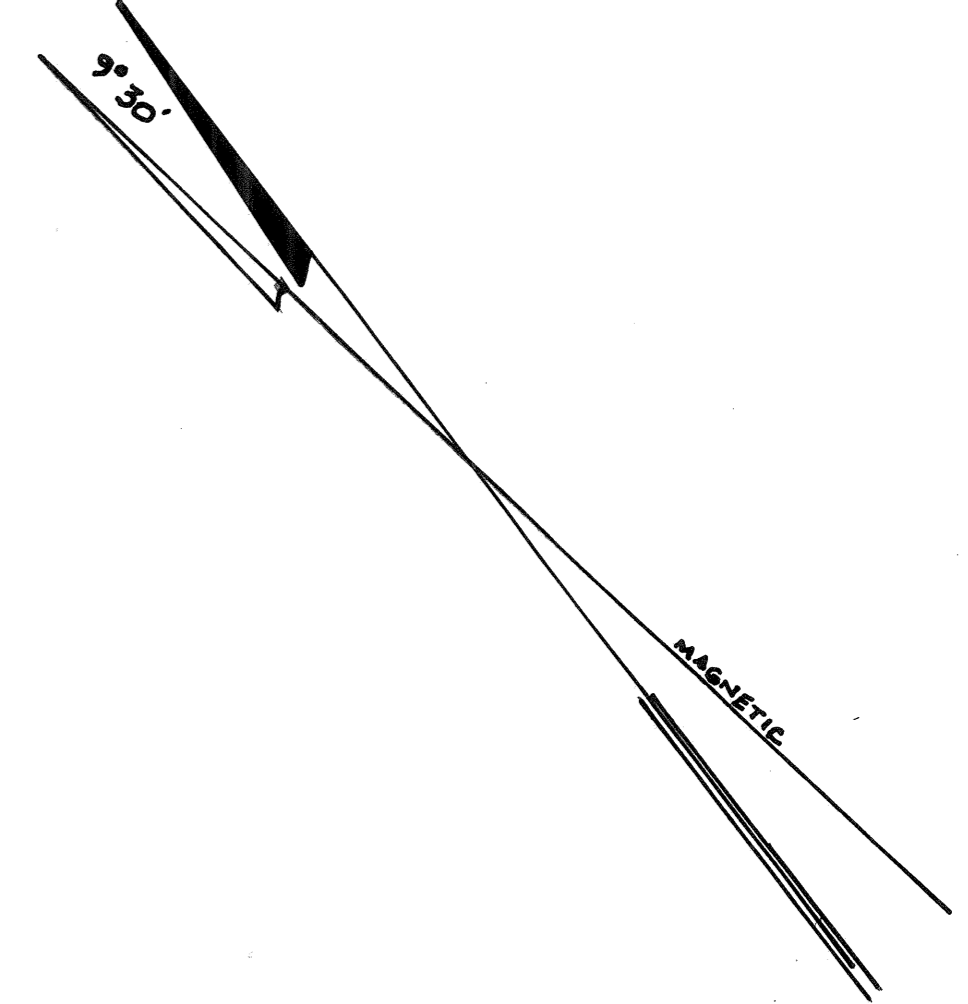
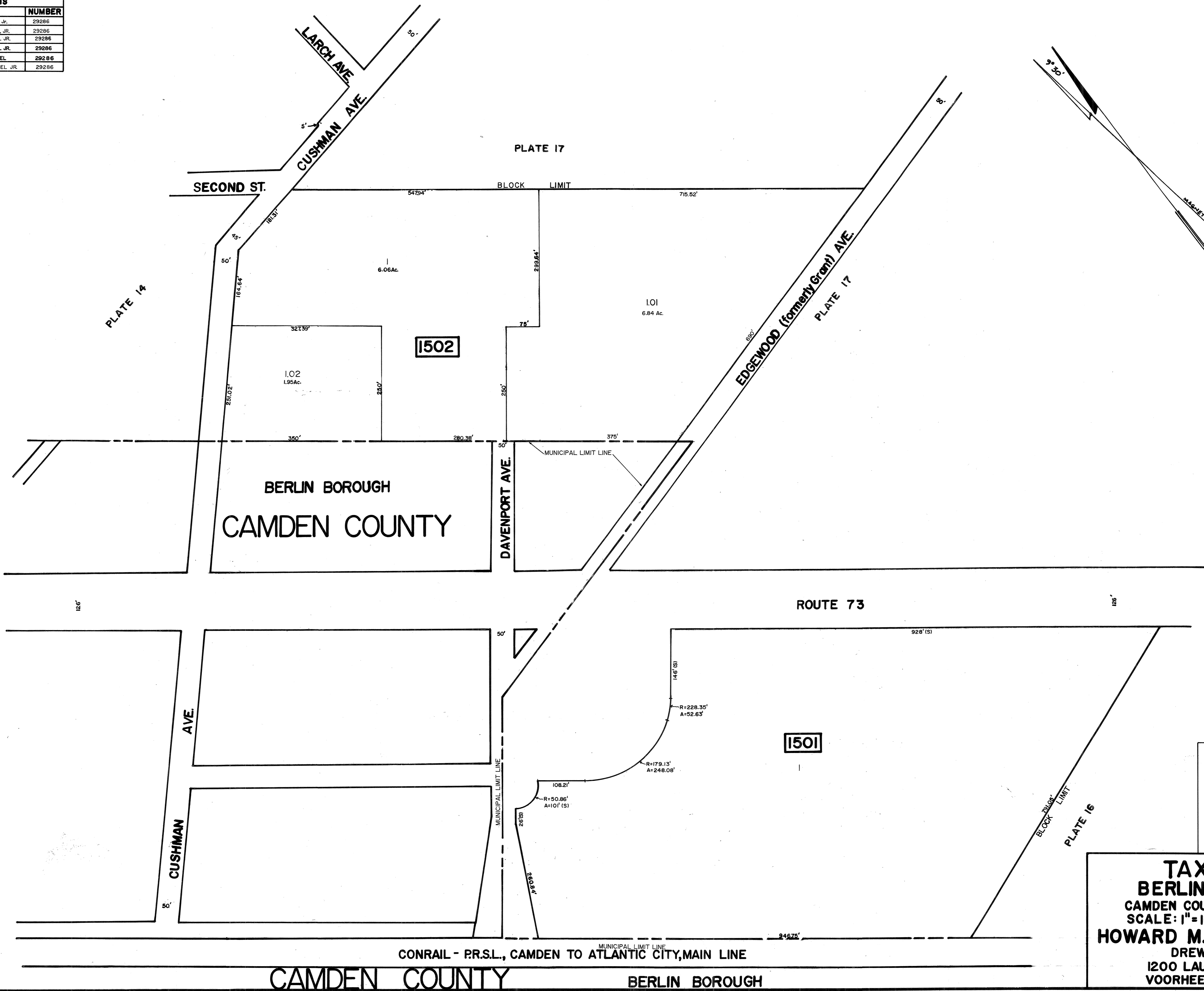


REVISIONS		
DATE	NAME	NUMBER
4/1/97	CHARLES J. RIEBEL JR.	29286
1/18/99	CHARLES J. RIEBEL JR.	29286
1/07/00	CHARLES J. RIEBEL JR.	29286
7/1/01	CHARLES J. RIEBEL JR.	29286
3/24/05	CHARLES J. RIEBEL	29286
8/1/05	CHARLES J. RIEBEL JR.	29286



NEW JERSEY DEPARTMENT OF THE TREASURY
 DIVISION OF TAXATION
 LOCAL EXERCISES BRANCH
 APPROVED AS A TAX MAP PURSUANT TO THE
 PROVISIONS OF CHAPTER 175, LAWS OF 1913, ETC.
 FOR THE DEPARTMENT, DIVISION OF TAXATION
 BY: *Howard M. Schoor* P.E. & L.S.
 LIC. # 15434 CHIEF ENGINEERING SECTION
 DATE: MAR 21 1991 SERIAL NO. 719

TAX MAP
BERLIN TOWNSHIP
 CAMDEN COUNTY, NEW JERSEY
 SCALE: 1" = 100' OCTOBER 1, 1989
HOWARD M. SCHOOR, P.E.-L.S.
 DREWES & LOWE
 1200 LAUREL OAK ROAD
 VOORHEES, NEW JERSEY