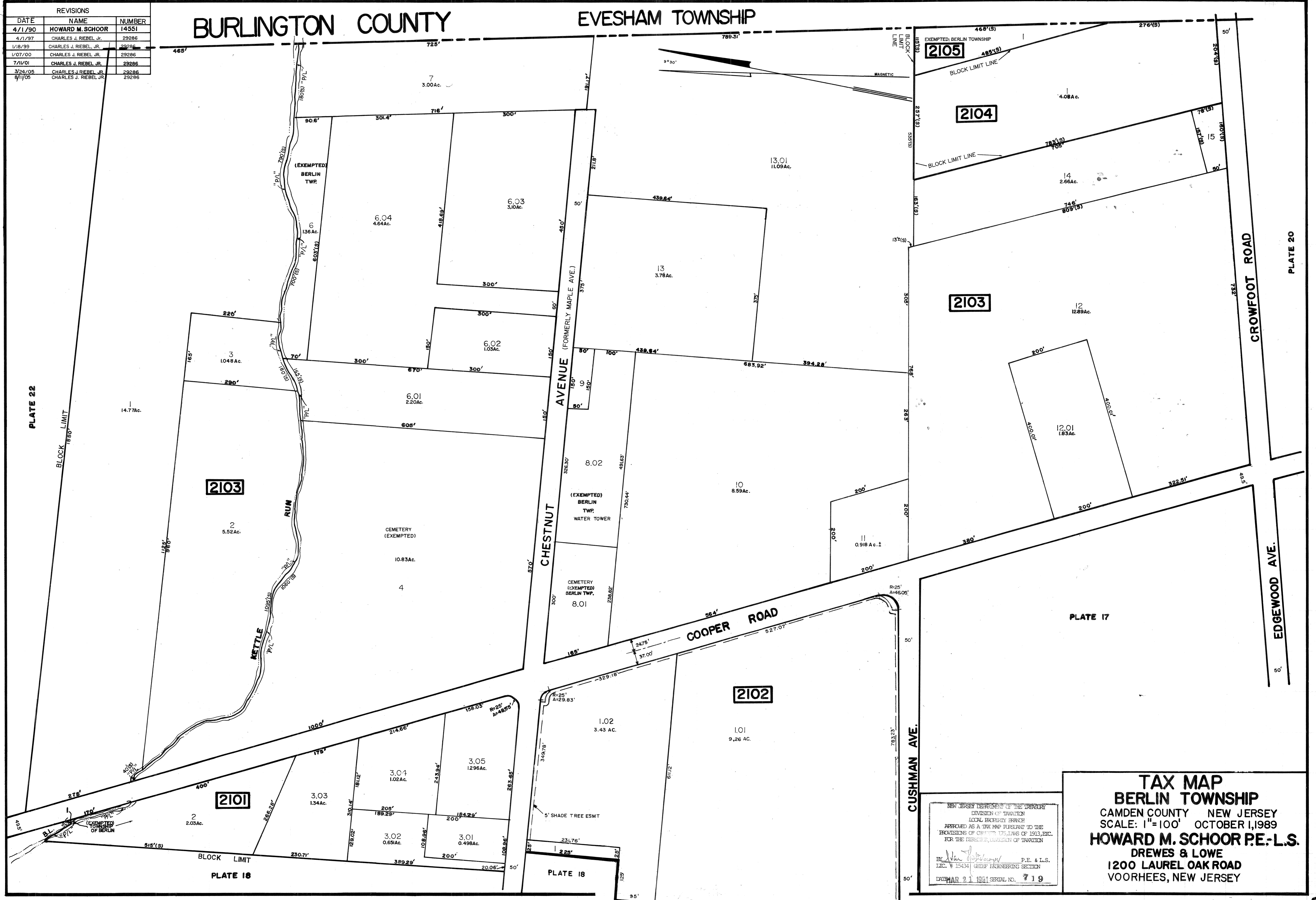


REVISIONS		
DATE	NAME	NUMBER
4/1/90	HOWARD M. SCHOOR	14551
4/1/97	CHARLES J. RIEBEL JR.	29286
1/18/99	CHARLES J. RIEBEL JR.	29286
1/07/00	CHARLES J. RIEBEL JR.	29286
7/11/01	CHARLES J. RIEBEL JR.	29286
3/24/05	CHARLES J. RIEBEL JR.	29286
8/1/05	CHARLES J. RIEBEL JR.	29286

BURLINGTON COUNTY EVESHAM TOWNSHIP



NEW JERSEY DEPARTMENT OF THE TREASURY  
 DIVISION OF TAXATION  
 LOCAL PROPERTY TAX MAP  
 PREPARED AS A TAX MAP PURSUANT TO THE  
 PROVISIONS OF CHAPTER 125, LAWS OF 1913, ETC.  
 FOR THE DIRECTOR, DIVISION OF TAXATION  
 BY: *Howard M. Schoor* P.E. & L.S.  
 LIC. # 15434 CHIEF ENGINEERING SECTION  
 DATE: MAR 21 1991 SERIAL NO. 719

**TAX MAP**  
**BERLIN TOWNSHIP**  
 CAMDEN COUNTY NEW JERSEY  
 SCALE: 1"=100' OCTOBER 1, 1989  
**HOWARD M. SCHOOR P.E.-L.S.**  
 DREWES & LOWE  
 1200 LAUREL OAK ROAD  
 VOORHEES, NEW JERSEY