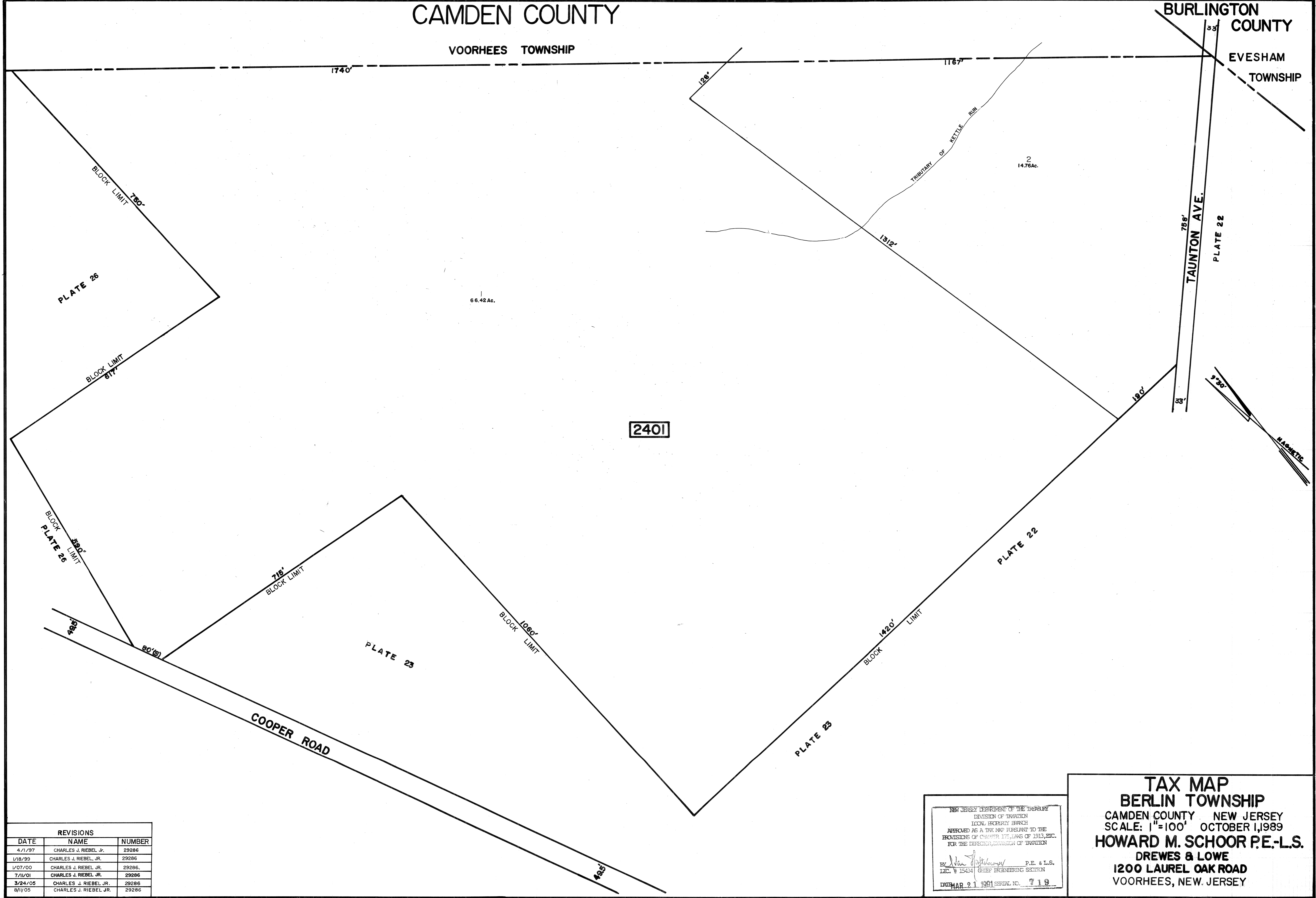


CAMDEN COUNTY

VOORHEES TOWNSHIP

BURLINGTON COUNTY

EVESHAM TOWNSHIP



2401

| REVISIONS | | |
|-----------|------------------------|--------|
| DATE | NAME | NUMBER |
| 4/1/97 | CHARLES J. RIEBEL, JR. | 29286 |
| 1/18/99 | CHARLES J. RIEBEL, JR. | 29286 |
| 1/07/00 | CHARLES J. RIEBEL, JR. | 29286 |
| 7/1/01 | CHARLES J. RIEBEL, JR. | 29286 |
| 3/24/05 | CHARLES J. RIEBEL, JR. | 29286 |
| 8/1/05 | CHARLES J. RIEBEL, JR. | 29286 |

NEW JERSEY DEPARTMENT OF THE TREASURY
 DIVISION OF TAXATION
 LOCAL PROPERTY BRANCH
 APPROVED AS A TAX MAP PURSUANT TO THE
 PROVISIONS OF CHAPTER 125, LAWS OF 1913, ETC.
 FOR THE DIRECTOR, DIVISION OF TAXATION

BY: *Howard M. Schoor* P.E. & L.S.
 LIC. # 15424 CHIEF ENGINEERING SECTION

DRAWN: MAR 21 1991 SERIAL NO. 719

TAX MAP
BERLIN TOWNSHIP
 CAMDEN COUNTY NEW JERSEY
 SCALE: 1"=100' OCTOBER 1, 1989
HOWARD M. SCHOOR P.E.-L.S.
DREWES & LOWE
 1200 LAUREL OAK ROAD
 VOORHEES, NEW JERSEY