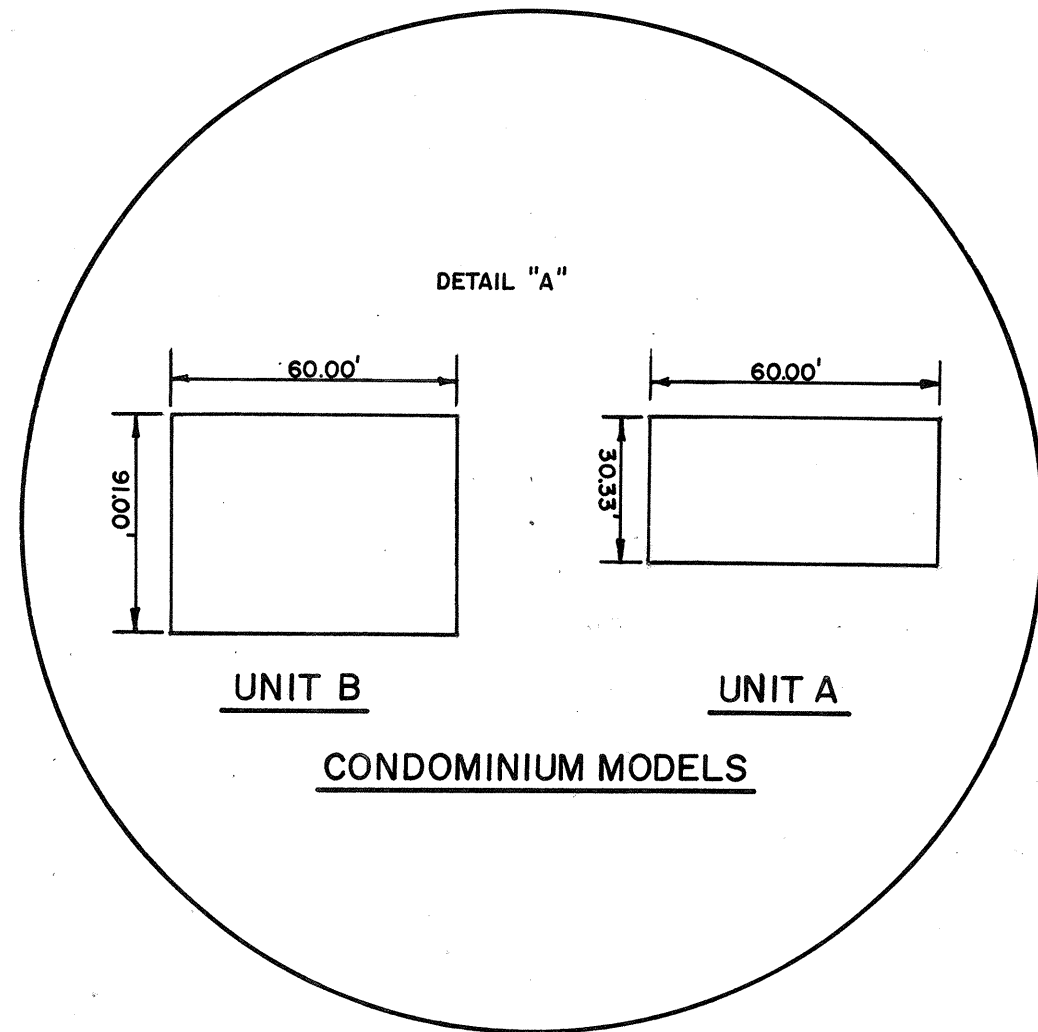
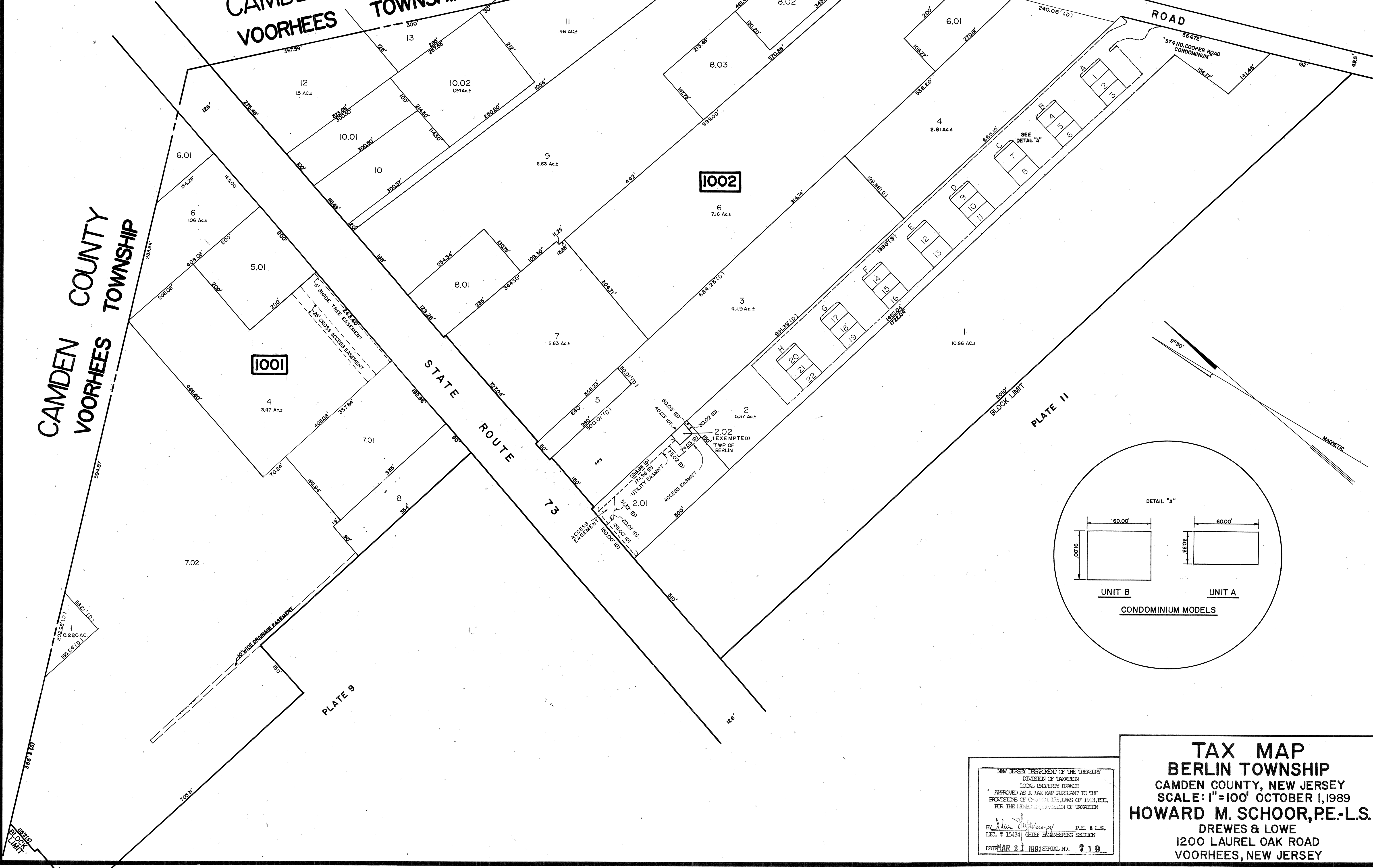


REVISIONS		
DATE	NAME	NUMBER
4/1/90	HOWARD M. SCHOOR	14551
4/1/97	CHARLES J. RIEBEL JR.	29286
1/18/99	CHARLES J. RIEBEL JR.	29286
1/7/00	CHARLES J. RIEBEL JR.	29286
7/11/01	CHARLES J. RIEBEL JR.	29286
3/24/05	CHARLES J. RIEBEL JR.	29286
8/11/05	CHARLES J. RIEBEL JR.	29286



NEW JERSEY DEPARTMENT OF THE TREASURY
 DIVISION OF TAXATION
 LOCAL PROPERTY BRANCH
 AS A TAX MAP PURSUANT TO THE
 PROVISIONS OF CHAPTER 127, LWS OF 1912, ETC.
 FOR THE DEPARTMENT OF TAXATION
 By *Howard M. Schoor* P.E. & L.S.
 LIC. # 15434 CHIEF ENGINEERING SECTION
 DATE: MAR 21 1991 SERIAL NO. 719

TAX MAP
BERLIN TOWNSHIP
 CAMDEN COUNTY, NEW JERSEY
 SCALE: 1"=100' OCTOBER 1, 1989
HOWARD M. SCHOOR, P.E.-L.S.
 DREWES & LOWE
 1200 LAUREL OAK ROAD
 VOORHEES, NEW JERSEY