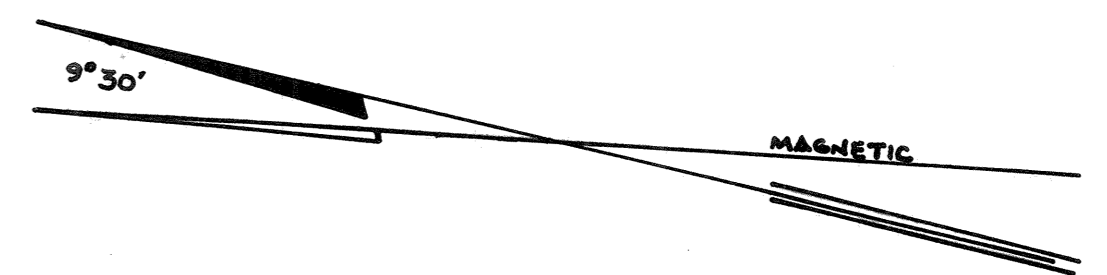
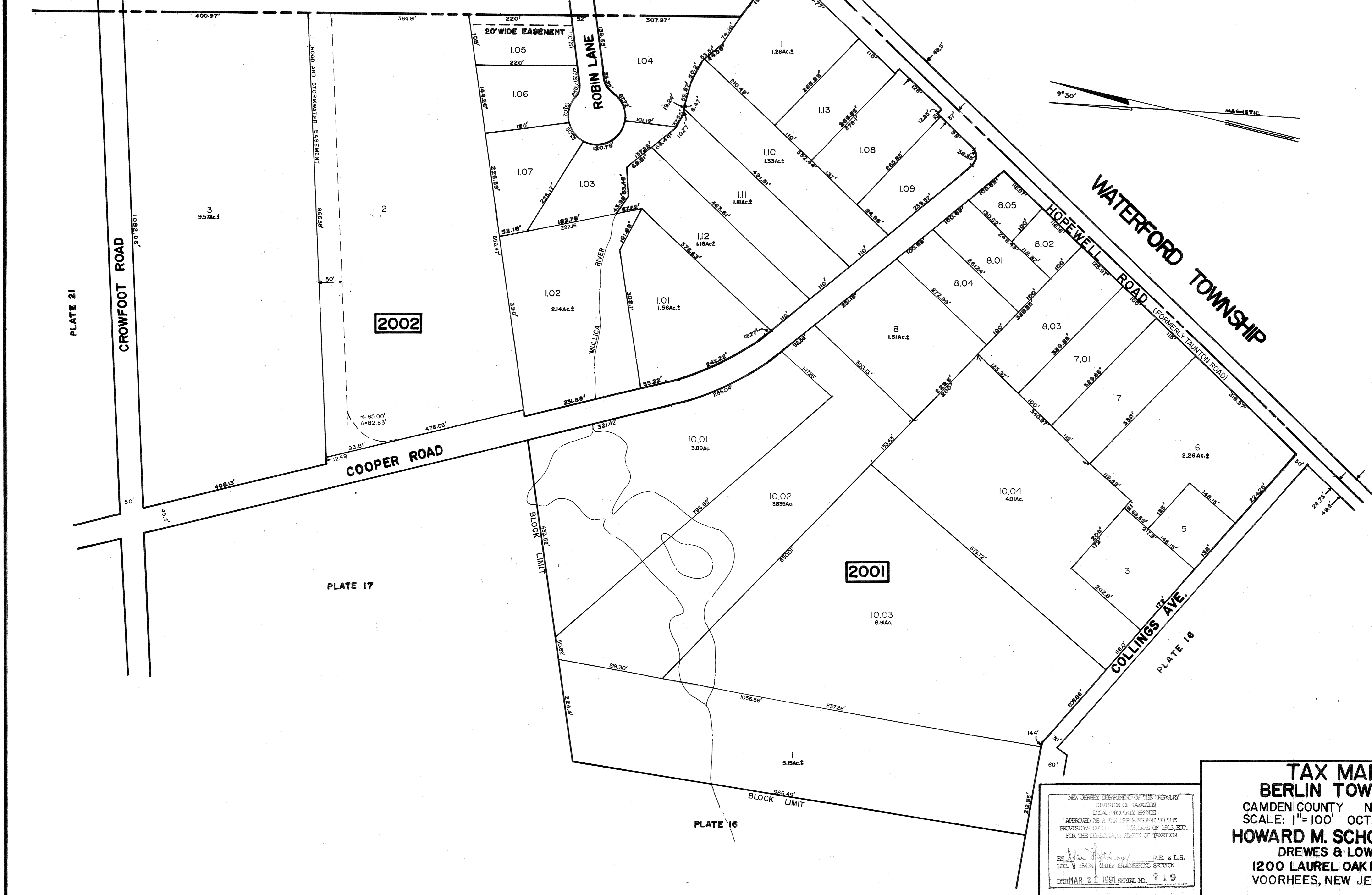


REVISIONS		
DATE	NAME	NUMBER
4/1/90	HOWARD M. SCHOOR	14551
4/1/97	CHARLES J. RIEBEL JR.	29286
1/18/99	CHARLES J. RIEBEL, JR.	29286
1/07/00	CHARLES J. RIEBEL JR.	29286
7/11/01	CHARLES J. RIEBEL JR.	29286
3/24/05	CHARLES J. RIEBEL JR.	29286
8/1/05	CHARLES J. RIEBEL JR.	29286

BURLINGTON COUNTY

EVESHAM TOWNSHIP



NEW JERSEY DEPARTMENT OF THE TREASURY
 DIVISION OF TAXATION
 LOCAL HOPEAN BRANCH
 APPROVED AS A TAX MAP PURSUANT TO THE
 PROVISIONS OF CHAPTER 123, LAWS OF 1913, ETC.
 FOR THE DISTRICT, DIVISION OF TAXATION

By: *Howard M. Schoor* P.E. & L.S.
 INC. # 15424 CHIEF ENGINEERING SECTION
 FEBRUARY 21 1991 SERIAL NO. 719

TAX MAP
BERLIN TOWNSHIP
 CAMDEN COUNTY NEW JERSEY
 SCALE: 1"=100' OCTOBER 1, 1989
HOWARD M. SCHOOR P.E.-L.S.
 DREWES & LOWE
 1200 LAUREL OAK ROAD
 VOORHEES, NEW JERSEY