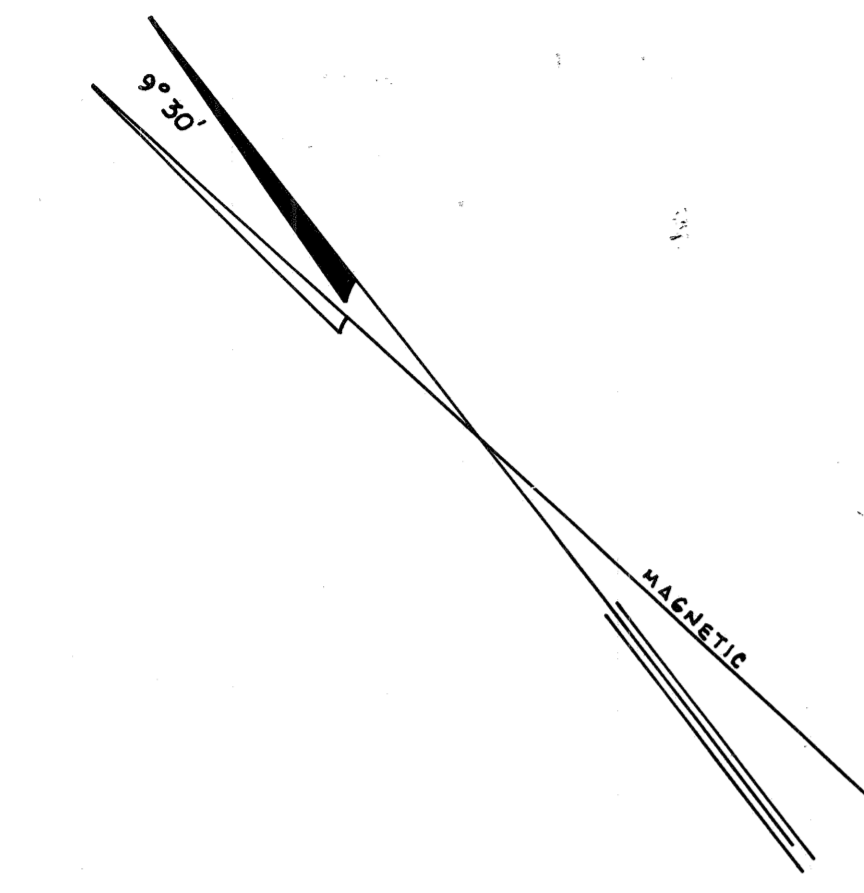


REVISIONS		
DATE	NAME	NUMBER
4/1/90	HOWARD M. SCHOOR	14551
4/1/97	CHARLES J. RIEBEL JR.	29286
1/18/99	CHARLES J. RIEBEL JR.	29286
1/07/00	CHARLES J. RIEBEL JR.	29286
7/11/01	CHARLES J. RIEBEL JR.	29286
4/23/02	CHARLES J. RIEBEL JR.	29286
3/24/05	CHARLES J. RIEBEL JR.	29286
8/11/05	CHARLES J. RIEBEL JR.	29286
8/15/08	CHARLES J. RIEBEL JR.	29286



CAMDEN COUNTY  
VOORHEES TOWNSHIP

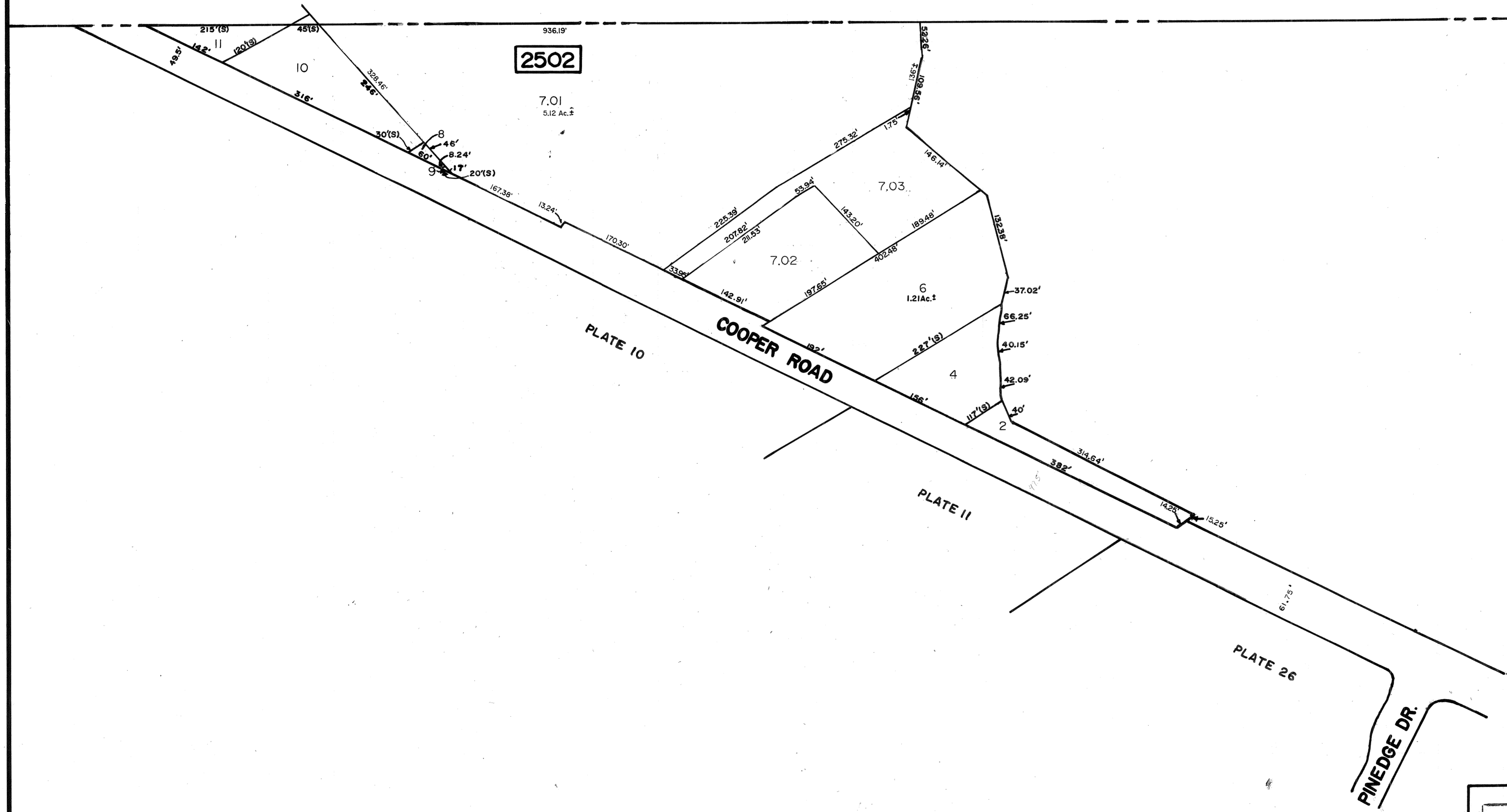


PLATE 24.02

NEW JERSEY DEPARTMENT OF THE TREASURY  
DIVISION OF TAXATION  
LOCAL PROPERTY BRANCH  
APPROVED AS A TAX MAP PURSUANT TO THE  
PROVISIONS OF CHAPTER 123, P.L. 1989  
FOR THE DIRECTOR, DIVISION OF TAXATION  
BY *Howard M. Schoor* P.E. & L.S.  
LIC. # 15434 CIVIL ENGINEERING SECTION  
DATE: MAR 21 1991 SERIAL NO. 719

**TAX MAP**  
**BERLIN TOWNSHIP**  
CAMDEN COUNTY NEW JERSEY  
SCALE: 1"=100' OCTOBER 1, 1989  
**HOWARD M. SCHOOR P.E.-L.S.**  
**DREWES & LOWE**  
1200 LAUREL OAK ROAD  
VOORHEES, NEW JERSEY