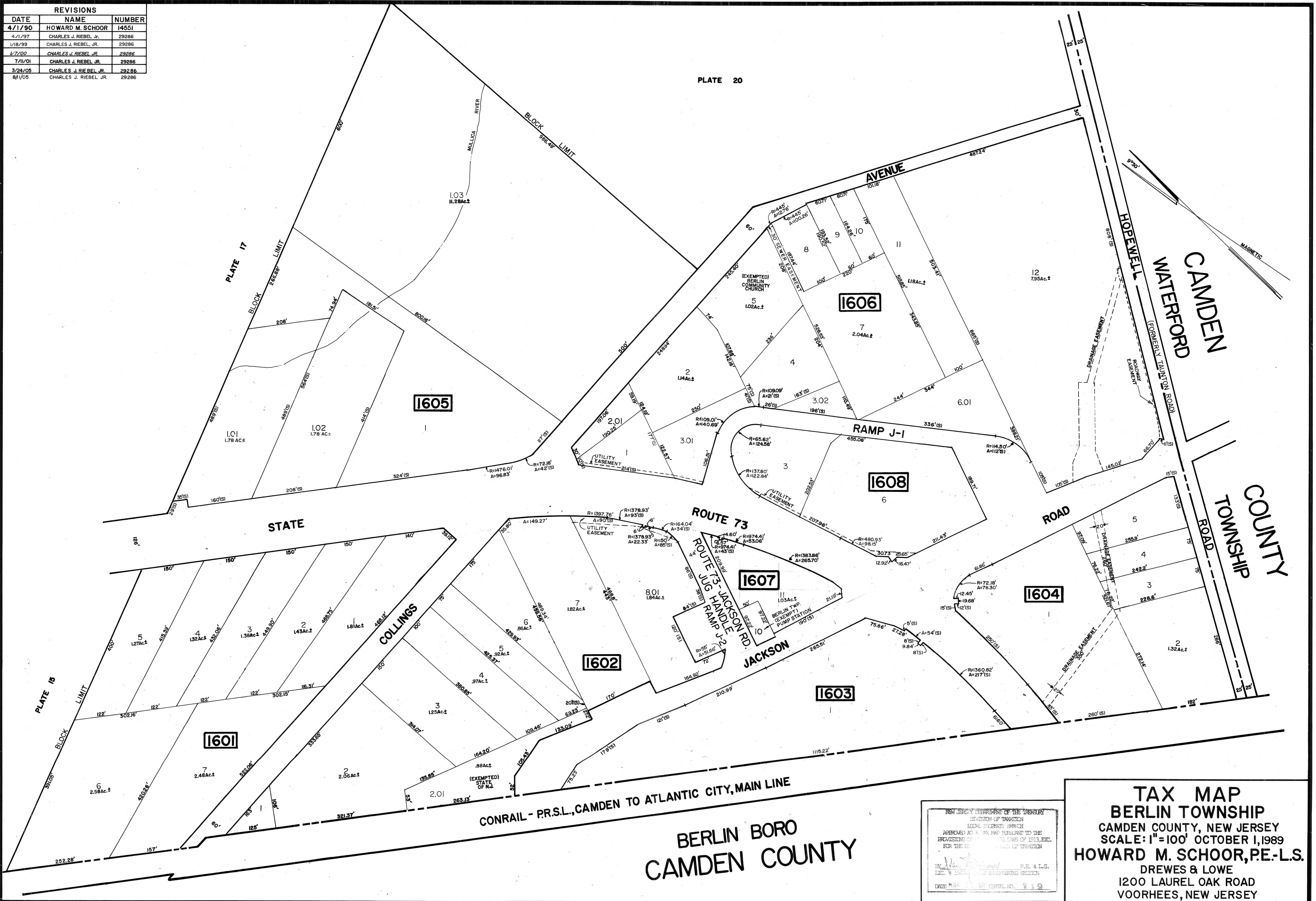


REVISIONS		
DATE	NAME	NUMBER
4/1/90	HOWARD M. SCHOOR	14551
4/1/97	CHARLES J. RIEBEL JR.	29286
1/18/99	CHARLES J. RIEBEL, JR.	29286
1/7/00	CHARLES J. RIEBEL JR.	29286
7/11/01	CHARLES J. RIEBEL JR.	29286
3/24/05	CHARLES J. RIEBEL JR.	29286
8/1/05	CHARLES J. RIEBEL JR.	29286

PLATE 20



NEW JERSEY DEPARTMENT OF THE TREASURY
 DIVISION OF TAXATION
 LOCAL EXEMPTION BRANCH
 APPROVED AS TO TAX MAP PURSUANT TO THE
 PROVISIONS OF THE TAX MAP ACT OF 1913, ETC.
 FOR THE TOWNSHIP OF BERLIN

BY: *[Signature]* P.E. & L.S.
 LIC. # 15141 ENGINEERING SECTION

EXPIRES: 10/1/99

TAX MAP
BERLIN TOWNSHIP
 CAMDEN COUNTY, NEW JERSEY
 SCALE: 1"=100' OCTOBER 1, 1989
HOWARD M. SCHOOR, P.E.-L.S.
 DREWES & LOWE
 1200 LAUREL OAK ROAD
 VOORHEES, NEW JERSEY