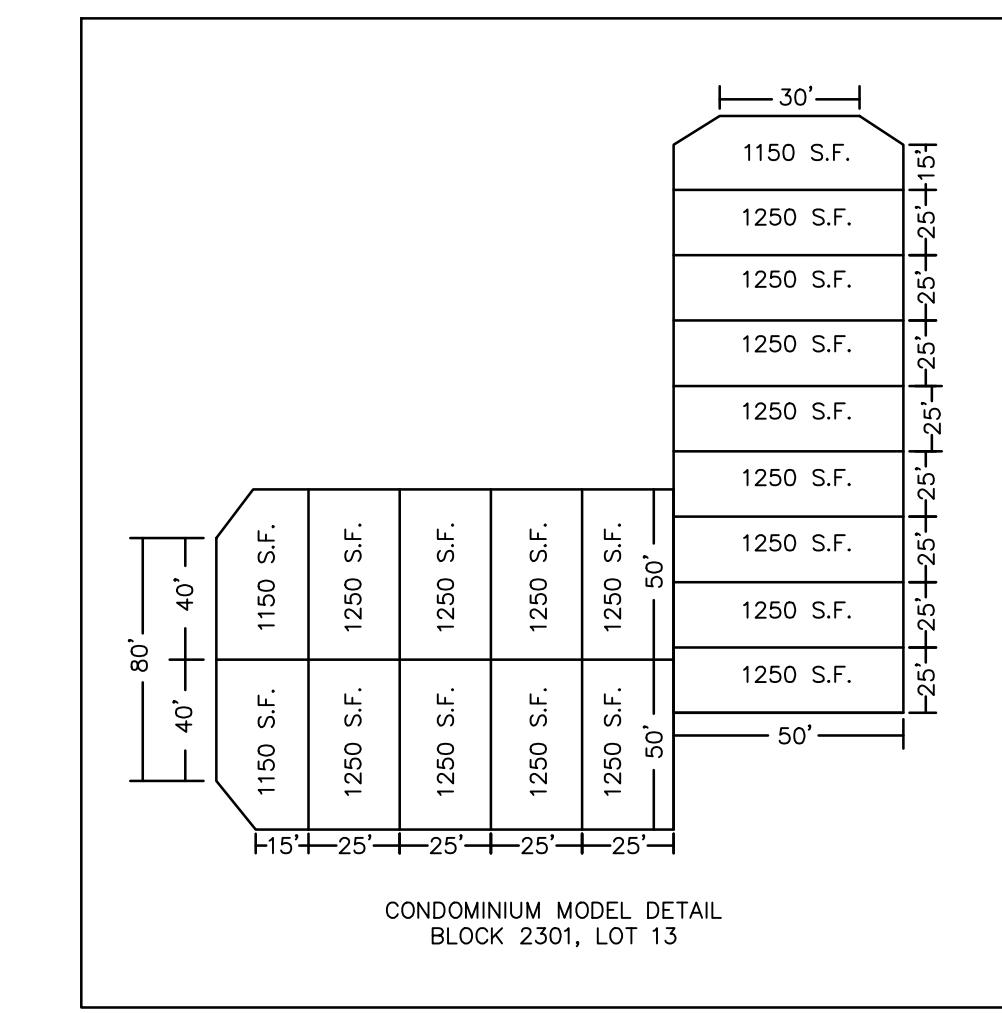
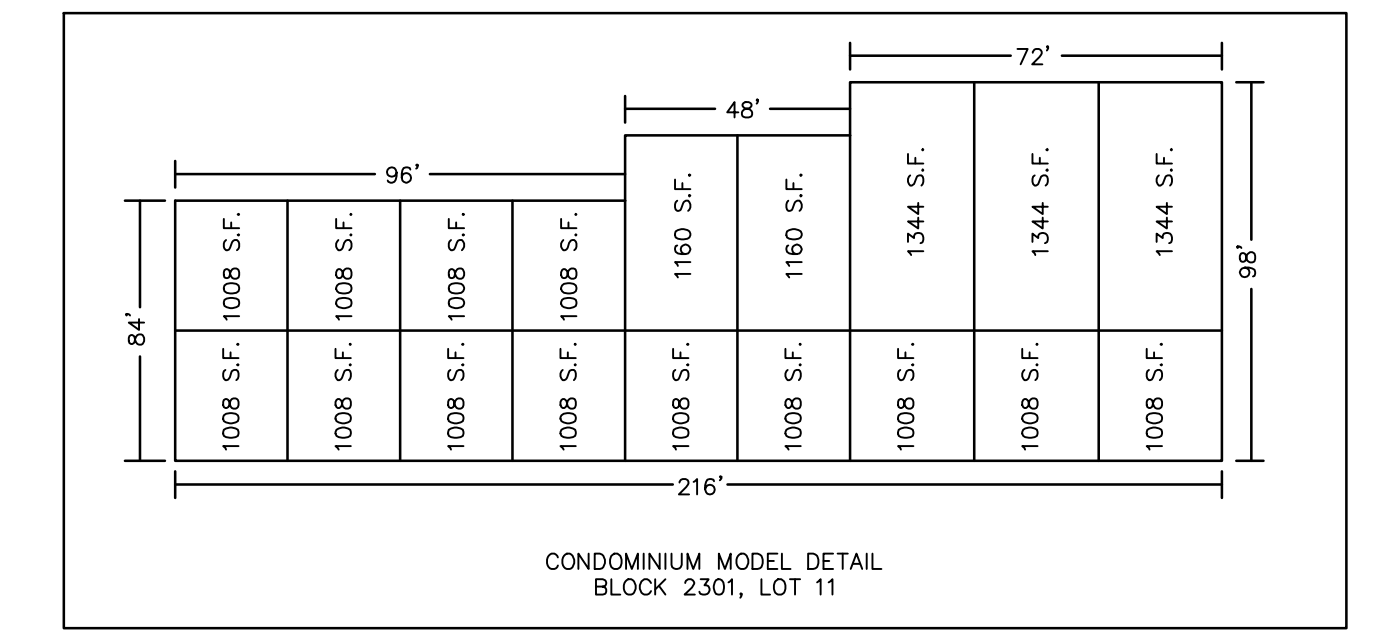
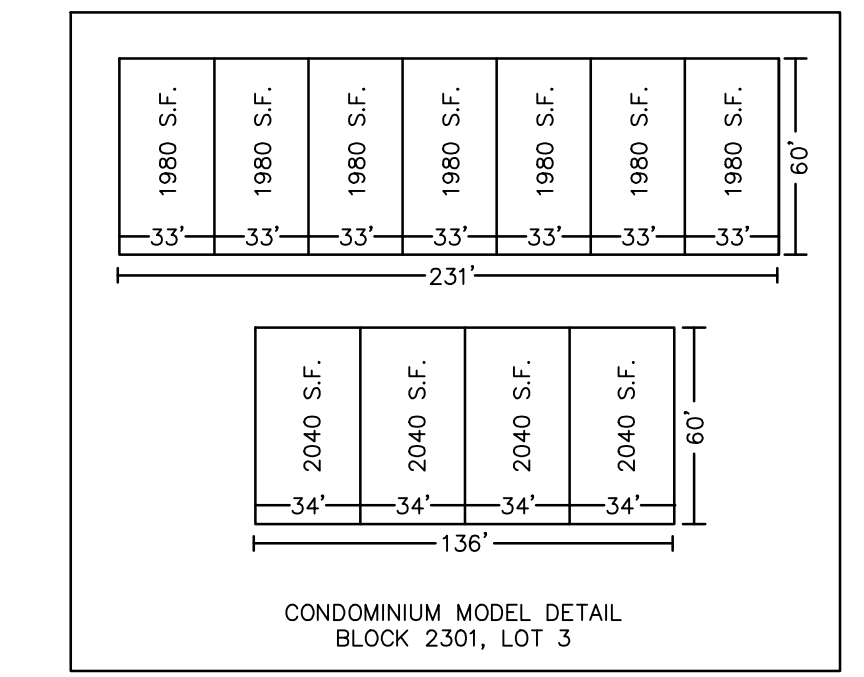
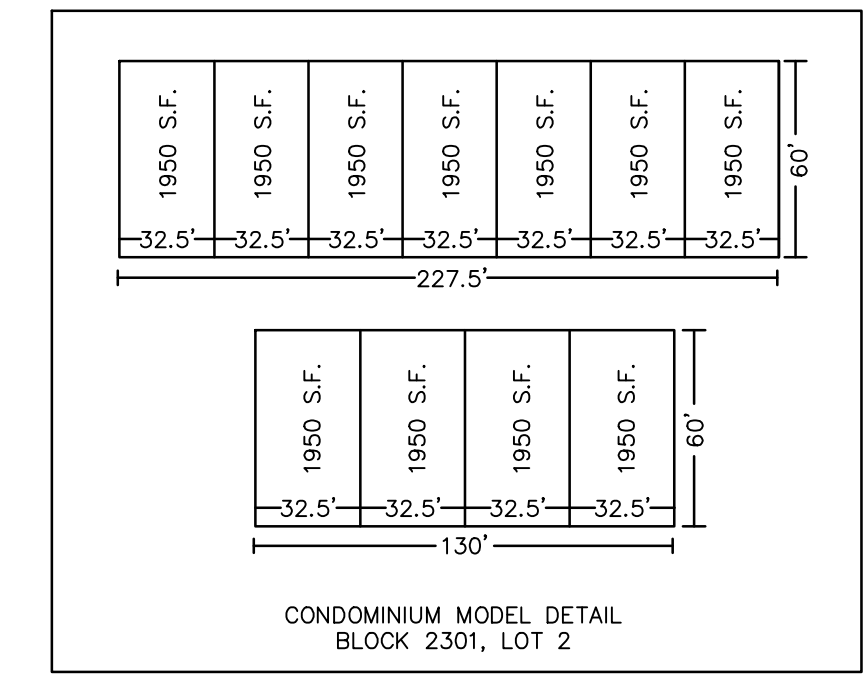
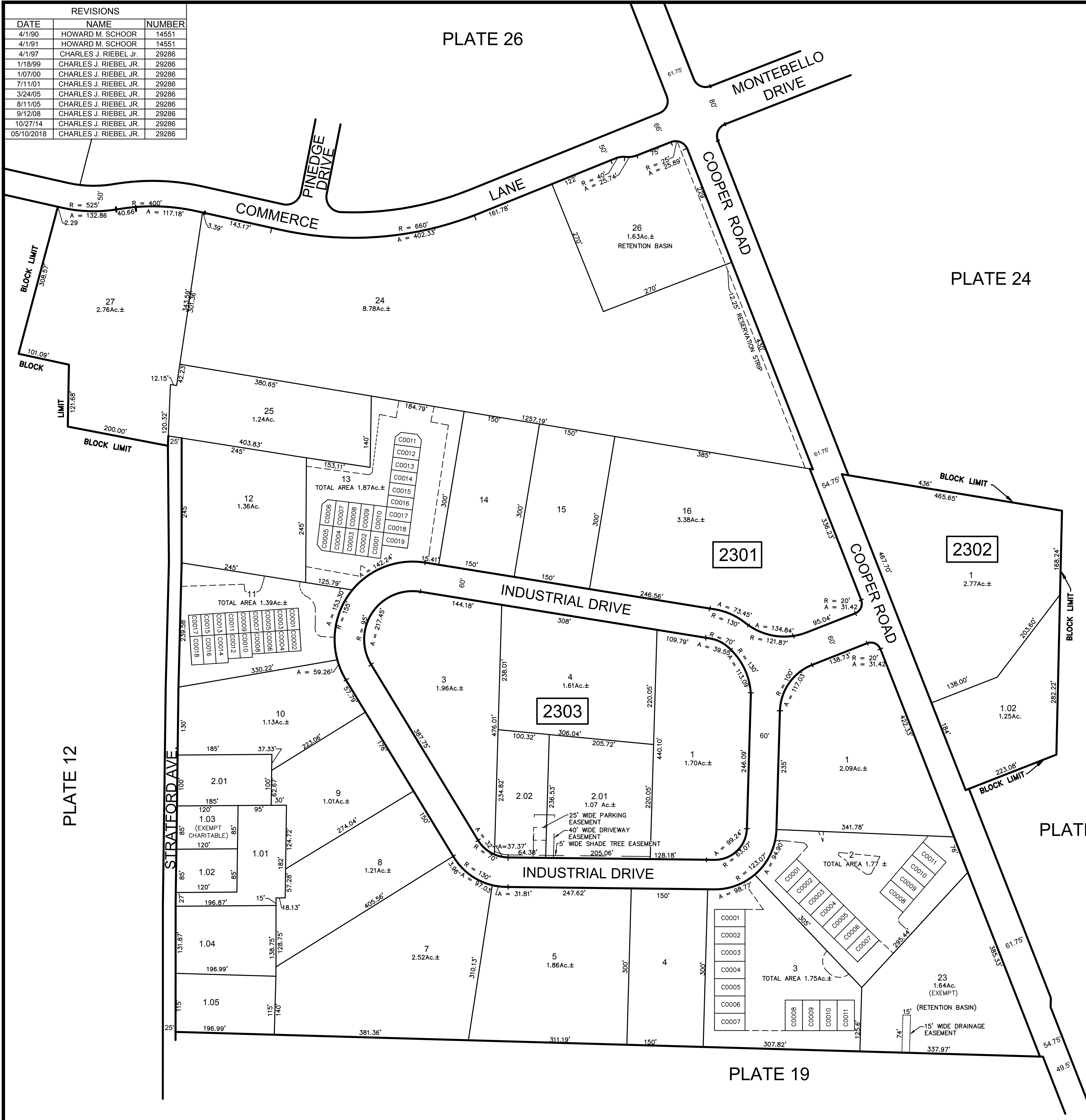


REVISIONS		
DATE	NAME	NUMBER
4/1/90	HOWARD M. SCHOOR	14551
4/1/91	HOWARD M. SCHOOR	14551
4/1/97	CHARLES J. RIEBEL JR.	29286
1/18/99	CHARLES J. RIEBEL JR.	29286
1/07/00	CHARLES J. RIEBEL JR.	29286
7/11/01	CHARLES J. RIEBEL JR.	29286
3/24/05	CHARLES J. RIEBEL JR.	29286
8/11/05	CHARLES J. RIEBEL JR.	29286
9/12/08	CHARLES J. RIEBEL JR.	29286
10/27/14	CHARLES J. RIEBEL JR.	29286
05/10/2018	CHARLES J. RIEBEL JR.	29286



THIS MAP IS A PLOTTING OF THE TAX MAP SHEET No. 23 PREPARED BY HOWARD M. SCHOOR P.E., P.L.S., DATED OCTOBER 1, 1989

TAX MAP
BERLIN TOWNSHIP
 CAMDEN COUNTY NEW JERSEY
 SCALE: 1" = 100' SEPTEMBER 9, 2008
CHARLES J. RIEBEL JR., P.E., P.L.S.
 KEI ASSOCIATES, P.A.
 80 SOUTH WHITE HORSE PIKE
 BERLIN, NEW JERSEY