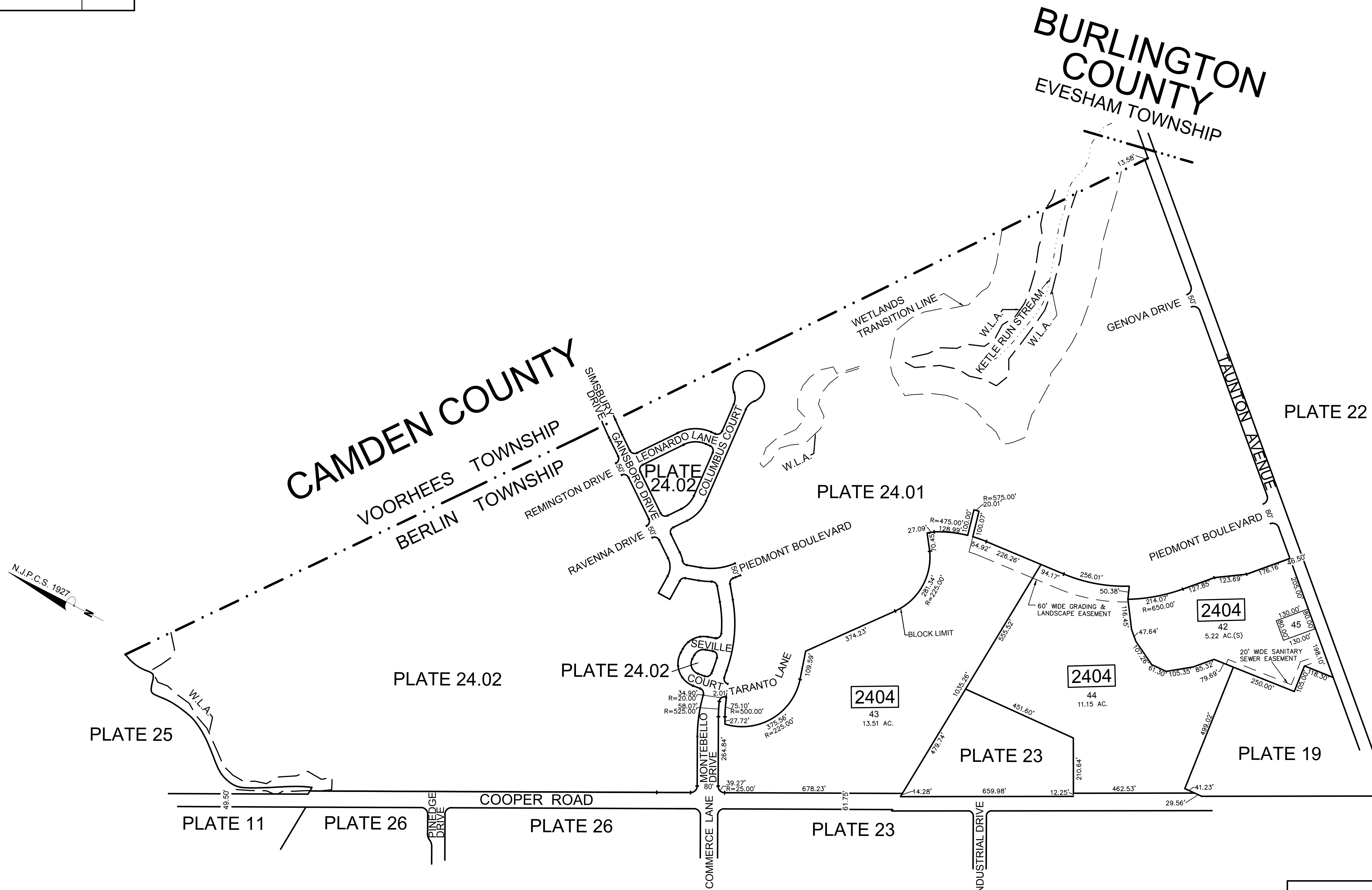


REVISIONS		
DATE	P. L. S. NAME	LIC. NO.
04/29/2014	CHARLES J. RIEBEL JR.	29286
10/27/2014	CHARLES J. RIEBEL JR.	29286
08/31/2017	CHARLES J. RIEBEL JR.	29286



TAX MAP
 BERLIN TOWNSHIP
 CAMDEN COUNTY, NEW JERSEY
 SCALE: 1"=200' 09/12/2008
 CHARLES J. RIEBEL JR.
 KEI ASSOCIATES, P.A.
 80 SOUTH WHITE HORSE PIKE
 BERLIN, NEW JERSEY

NOTE:
 - NORTH ARROW REFERENCE TAKEN FROM "FINAL PLAN OF LOTS - PART OF SECTION 1",
 PREPARED BY JAMES J. MADDONNI, P.E., P.L.S. DATED AUGUST 15, 2003, LAST REVISED
 OCTOBER 30, 2007