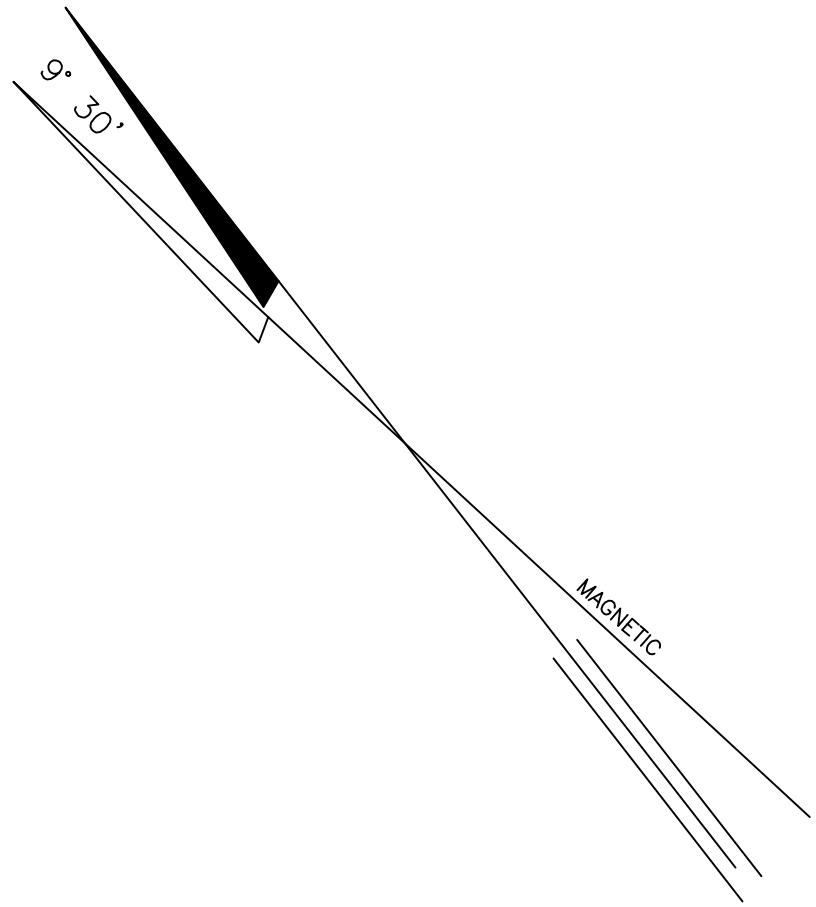


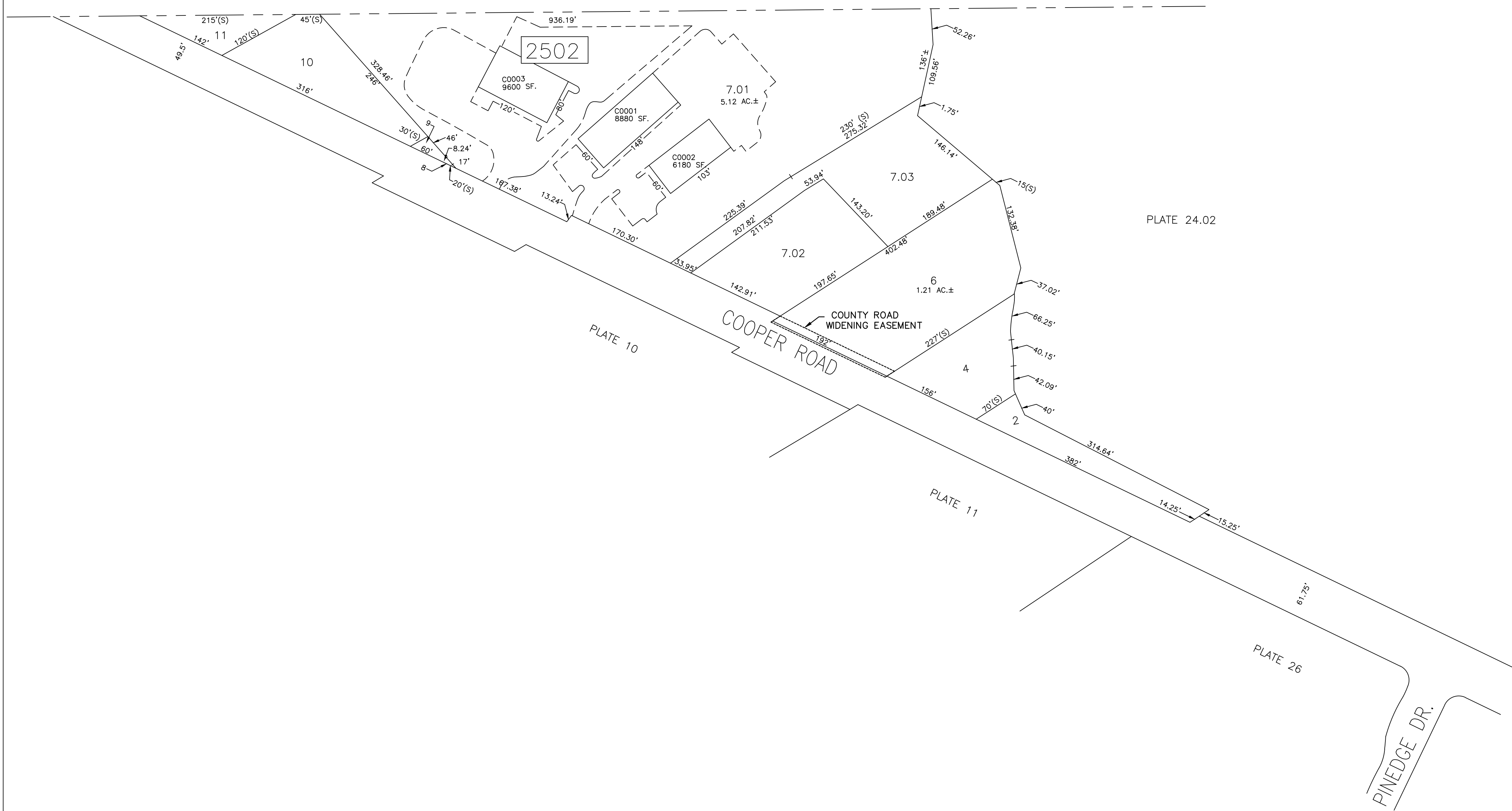
REVISIONS		
DATE	NAME	NUMBER
4/1/90	HOWARD M. SCHOOR	14551
4/1/97	CHARLES J. RIEBEL Jr.	29286
1/18/99	CHARLES J. RIEBEL JR.	29286
1/07/00	CHARLES J. RIEBEL JR.	29286
7/11/01	CHARLES J. RIEBEL JR.	29286
4/25/02	CHARLES J. RIEBEL JR.	29286
3/24/05	CHARLES J. RIEBEL JR.	29286
8/11/05	CHARLES J. RIEBEL JR.	29286
09/12/08	CHARLES J. RIEBEL JR.	29286
04/29/14	CHARLES J. RIEBEL JR.	29286

10/27/14	CHARLES J. RIEBEL JR.	29286
05/10/2018	CHARLES J. RIEBEL JR.	29286



CAMDEN COUNTY

VOORHEES TOWNSHIP



TAX MAP
 BERLIN TOWNSHIP
 CAMDEN COUNTY, NEW JERSEY
 SCALE: 1" = 100' OCTOBER 1, 1989
 HOWARD M. SCHOOR, P.E.-L.S.
 DREWES & LOWE
 1200 LAUREL OAK ROAD
 VOORHEES, NEW JERSEY