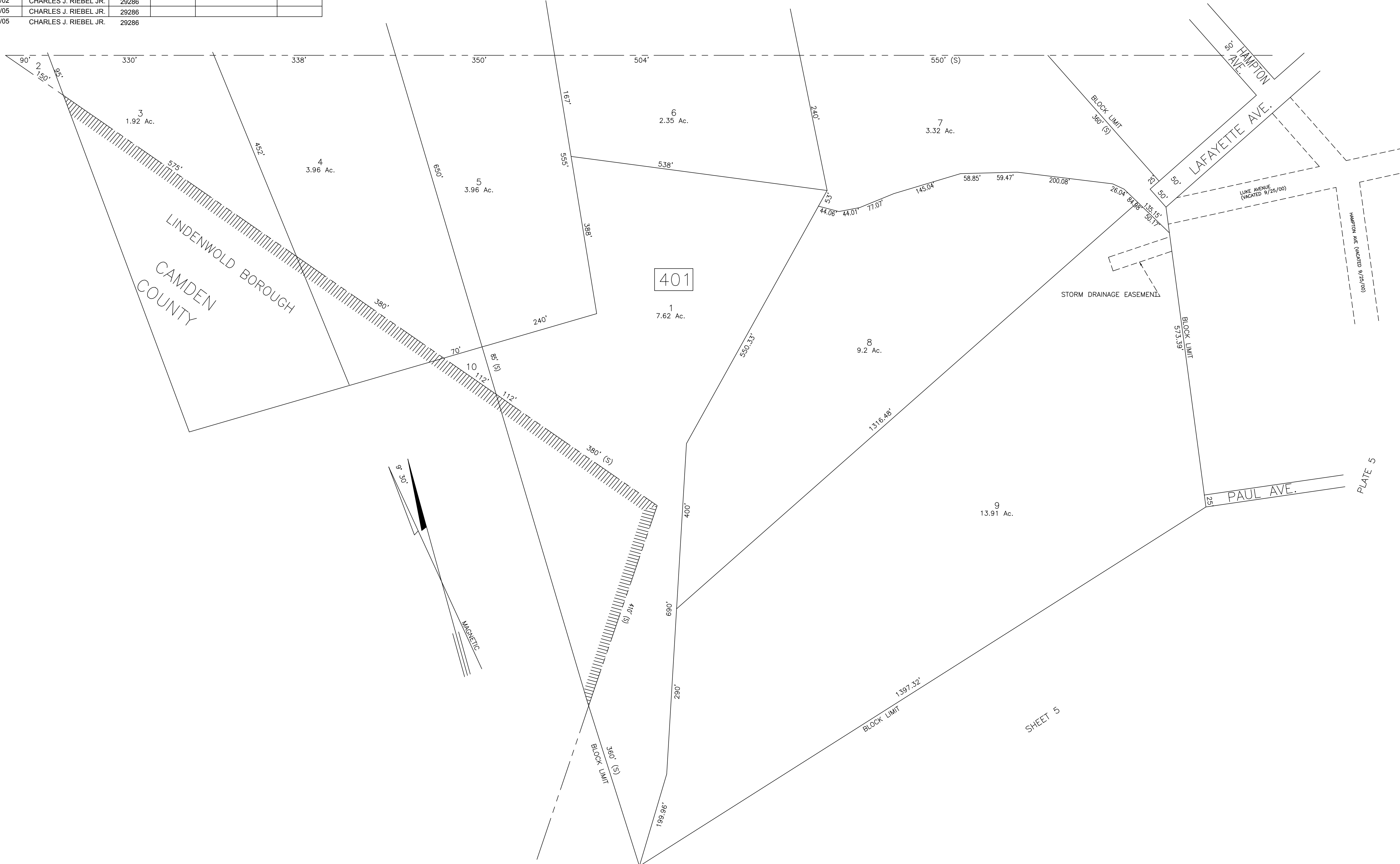


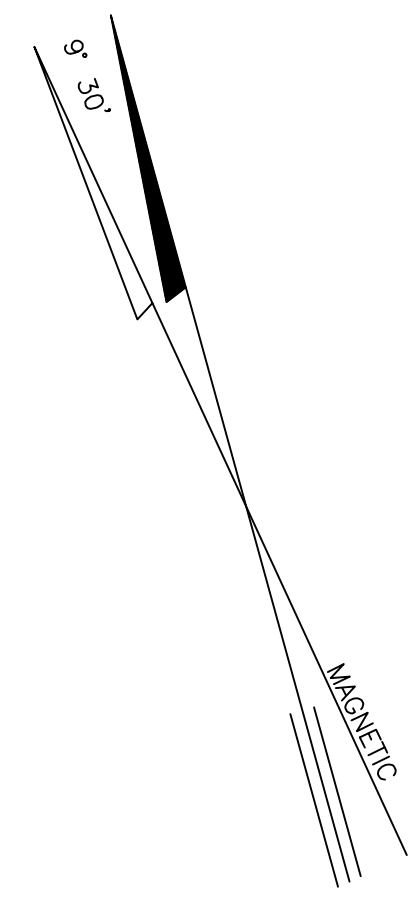
REVISIONS		
DATE	NAME	NUMBER
4/1/97	CHARLES J. RIEBEL Jr.	29286
1/18/99	CHARLES J. RIEBEL JR.	29286
1/7/00	CHARLES J. RIEBEL JR.	29286
7/11/01	CHARLES J. RIEBEL JR.	29286
8/15/02	CHARLES J. RIEBEL JR.	29286
3/24/05	CHARLES J. RIEBEL JR.	29286
8/11/05	CHARLES J. RIEBEL JR.	29286

VOORHEES TOWNSHIP

CAMDEN COUNTY



401



SHEET 3

SHEET 5

**TAX MAP**  
**BERLIN TOWNSHIP**  
 CAMDEN COUNTY, NEW JERSEY  
 SCALE: 1" = 100' OCTOBER 1, 1989  
**HOWARD M. SCHOOR, P.E.-L.S.**  
 DREWES & LOWE  
 1200 LAUREL OAK ROAD  
 VOORHEES, NEW JERSEY