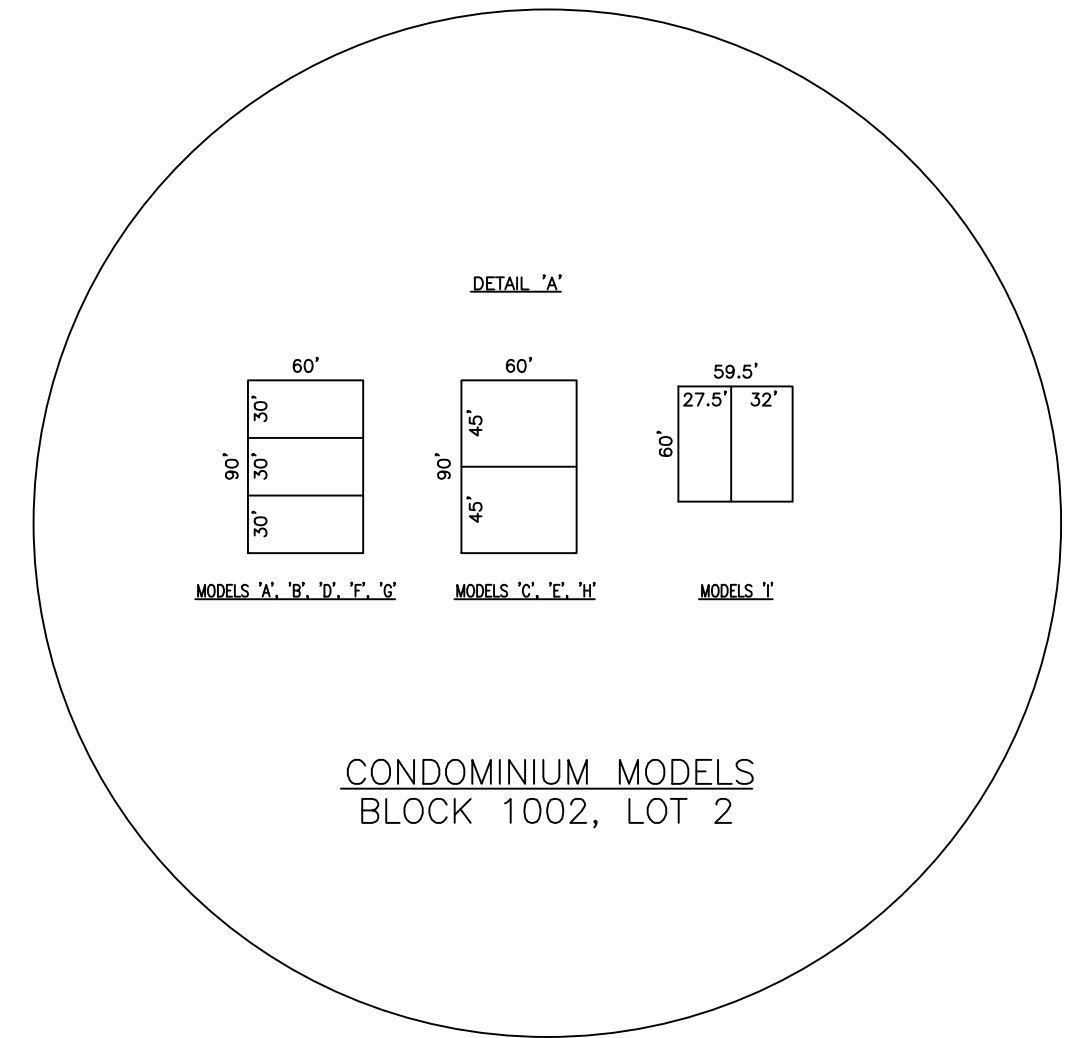
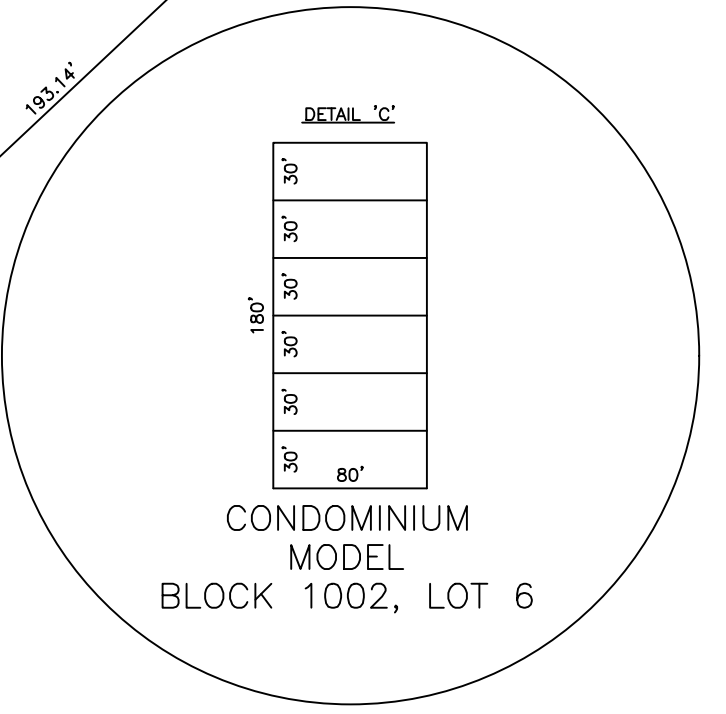
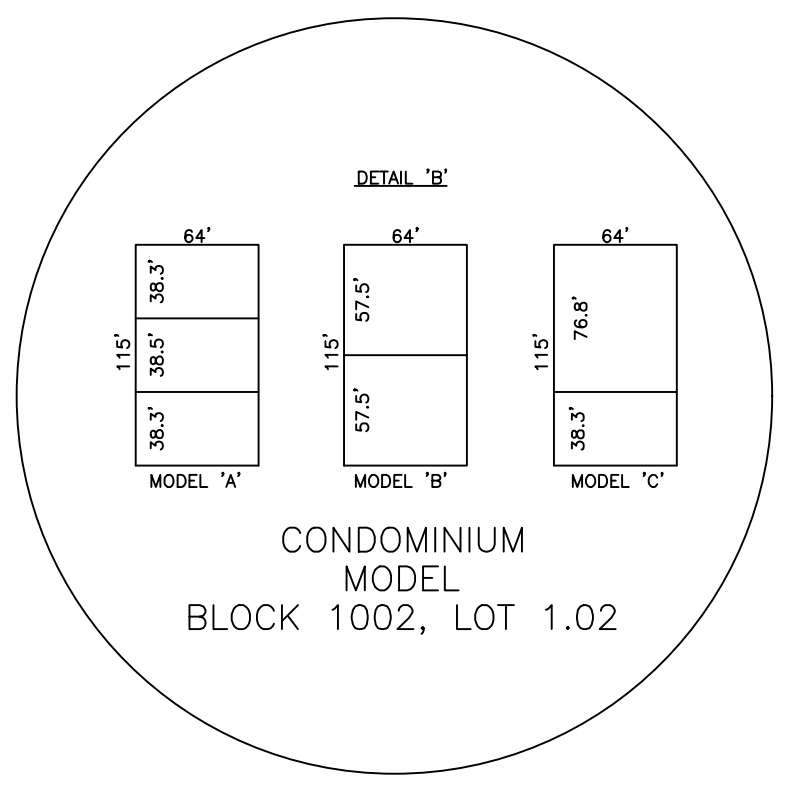
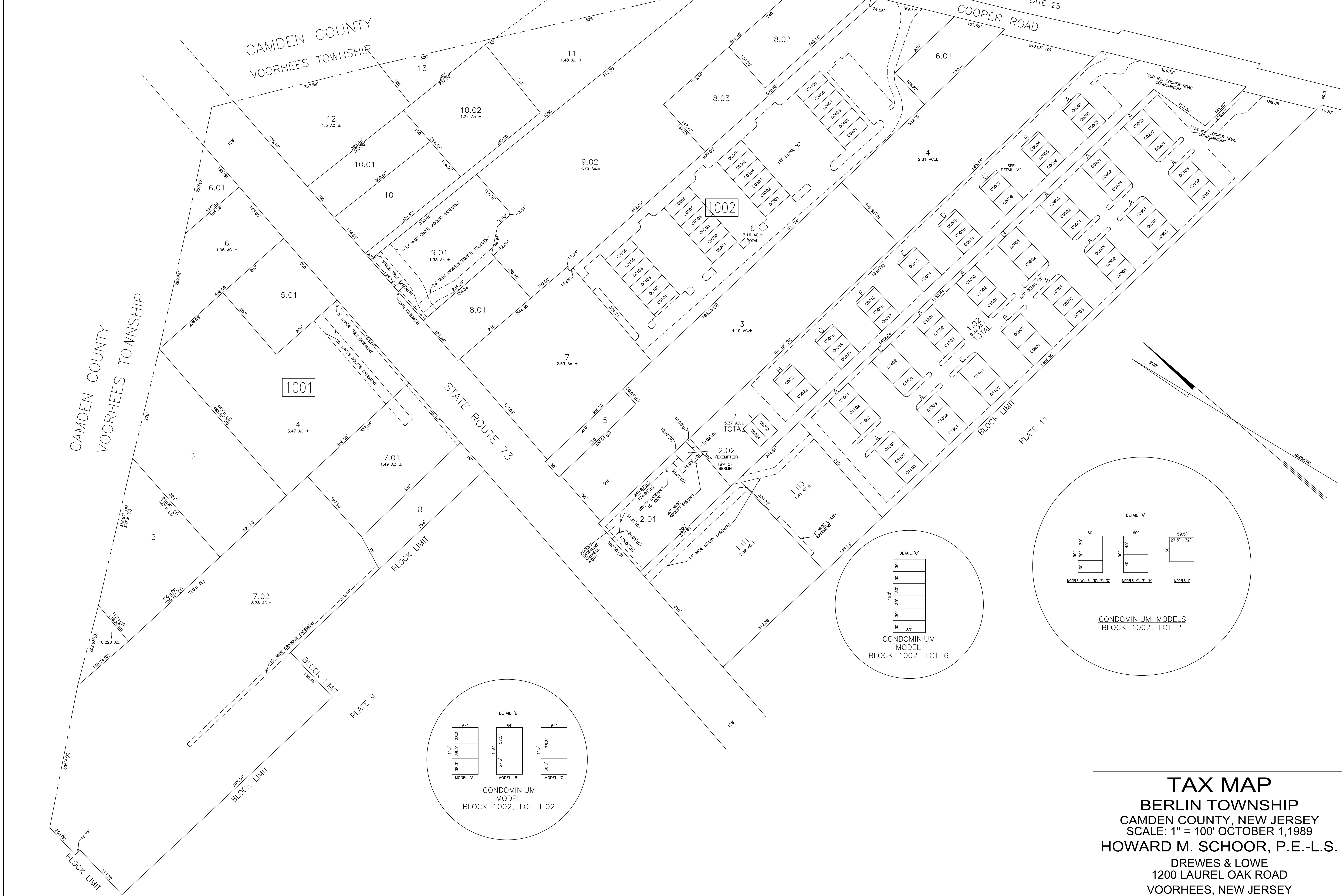


REVISIONS			REVISIONS			REVISIONS		
DATE	NAME	NUMBER	DATE	NAME	NUMBER	DATE	NAME	NUMBER
4/1/90	HOWARD M. SCHOOR	14551	3/24/05	CHARLES J. RIEBEL JR.	29286	8/29/18	CHARLES J. RIEBEL JR.	29286
4/1/97	CHARLES J. RIEBEL JR.	29286	8/11/05	CHARLES J. RIEBEL JR.	29286			
1/18/99	CHARLES J. RIEBEL JR.	29286	09/12/08	CHARLES J. RIEBEL JR.	29286			
1/7/00	CHARLES J. RIEBEL JR.	29286	04/30/14	CHARLES J. RIEBEL JR.	29286			
7/11/01	CHARLES J. RIEBEL JR.	29286	10/2/14	CHARLES J. RIEBEL JR.	29286			



**TAX MAP**  
**BERLIN TOWNSHIP**  
 CAMDEN COUNTY, NEW JERSEY  
 SCALE: 1" = 100' OCTOBER 1, 1989  
**HOWARD M. SCHOOR, P.E.-L.S.**  
 DREWES & LOWE  
 1200 LAUREL OAK ROAD  
 VOORHEES, NEW JERSEY