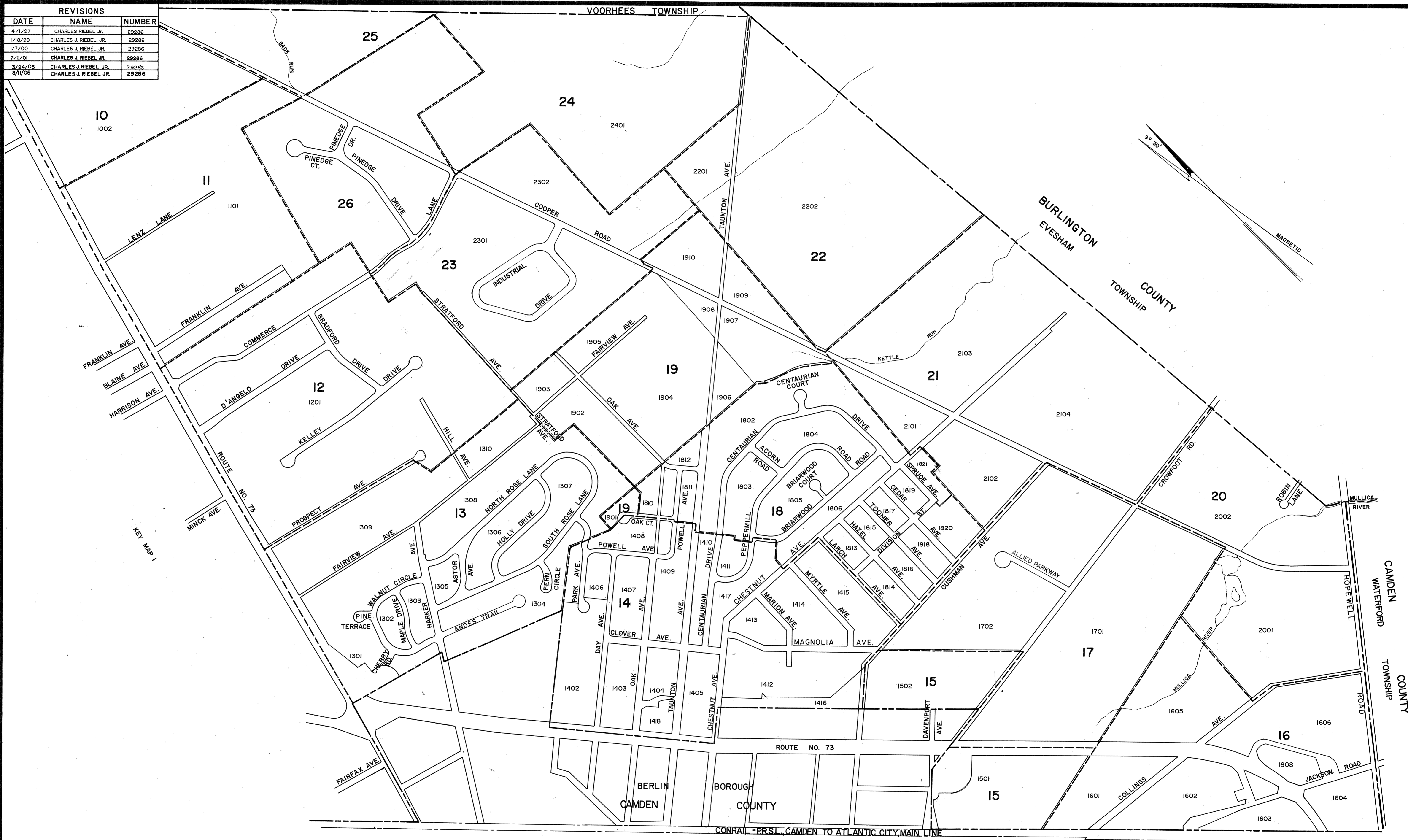


REVISIONS		
DATE	NAME	NUMBER
4/1/97	CHARLES RIEBEL JR.	29286
1/18/99	CHARLES J. RIEBEL, JR.	29286
1/7/00	CHARLES J. RIEBEL, JR.	29286
7/11/01	CHARLES J. RIEBEL JR.	29286
3/24/05	CHARLES J. RIEBEL JR.	29286
8/1/05	CHARLES J. RIEBEL JR.	29286



NEW JERSEY DEPARTMENT OF TREASURY  
 DIVISION OF TAXES  
 LOCAL PROPERTY TAXES  
 PREPARED AS A TAX MAP PURSUANT TO THE  
 PROVISIONS OF CHAPTER 125, LAWS OF 1915, ETC.  
 FOR THE DIRECTOR OF TAXATION

By: *Howard M. Schoor* P.E. & L.S.  
 INC. # 15431 CHIEF ENGINEERING SECTION  
 DATE: MAR 21 1991 SERIAL NO. 819

**TAX MAP**  
**BERLIN TOWNSHIP**  
 CAMDEN COUNTY, NEW JERSEY  
 SCALE: 1"=400' OCTOBER 1, 1989  
**HOWARD M. SCHOOR, P.E.-L.S.**  
 DREWES & LOWE  
 1200 LAUREL OAK ROAD  
 VOORHEES, NEW JERSEY