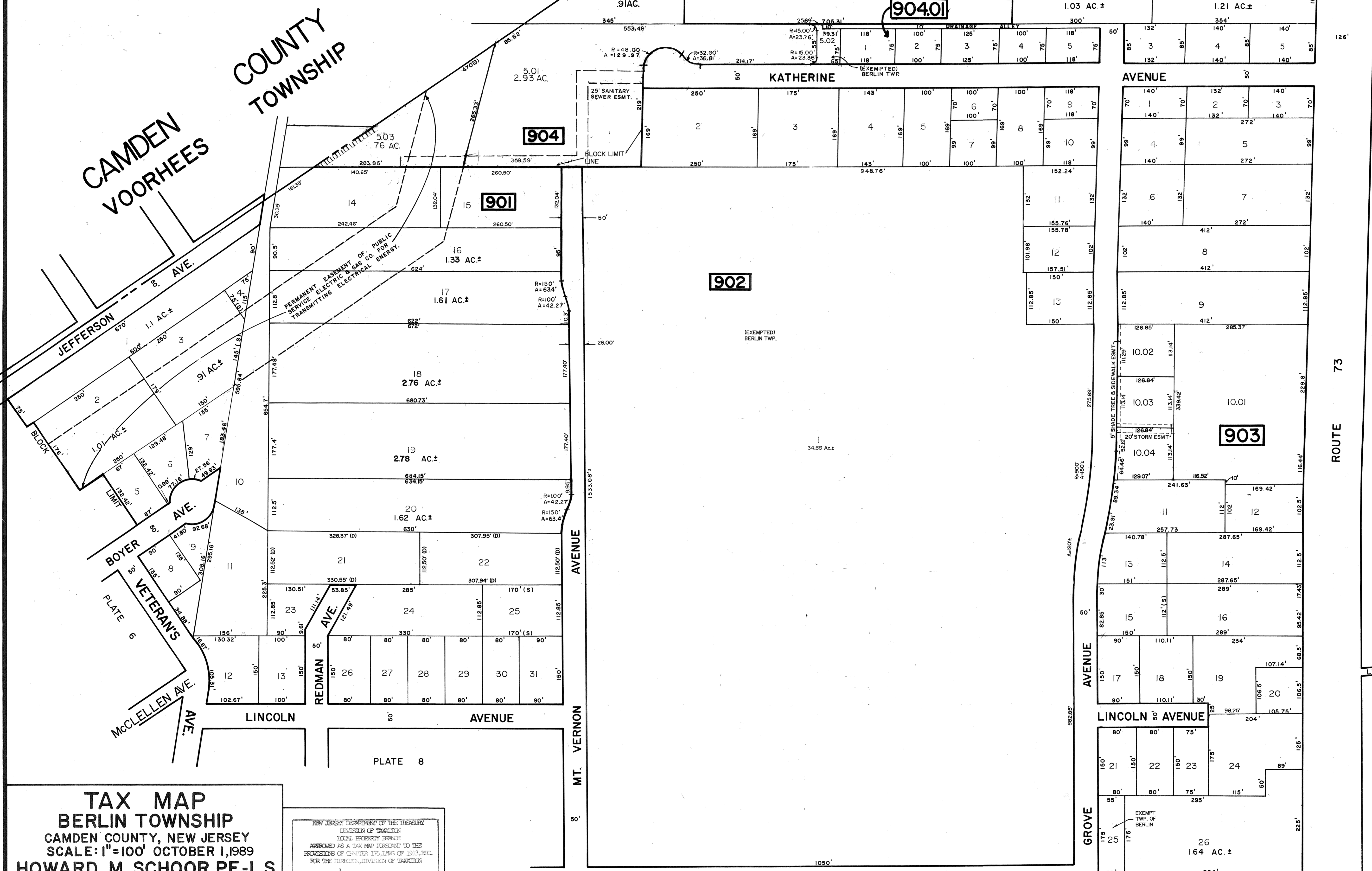


REVISIONS		
DATE	NAME	NUMBER
4/1/90	HOWARD M. SCHOOR	14551
4/1/97	CHARLES J. RIEBEL JR.	29286
1/8/99	CHARLES J. RIEBEL JR.	29286
1/7/00	CHARLES J. RIEBEL JR.	29286
7/1/01	CHARLES J. RIEBEL JR.	29286
3/24/05	CHARLES J. RIEBEL JR.	29286
9/1/05	CHARLES J. RIEBEL JR.	29286



TAX MAP
BERLIN TOWNSHIP
 CAMDEN COUNTY, NEW JERSEY
 SCALE: 1"=100' OCTOBER 1, 1989
HOWARD M. SCHOOR, P.E.-L.S.
 DREWES & LOWE
 1200 LAUREL OAK ROAD
 VOORHEES, NEW JERSEY

NEW JERSEY DEPARTMENT OF THE TREASURY
 DIVISION OF TAXATION
 LOCAL PROPERTY TAX
 APPROVED AS A TAX MAP PURSUANT TO THE
 PROVISIONS OF CHAPTER 175, LAWS OF 1913, ETC.
 FOR THE TOWNSHIP, DIVISION OF TAXATION
 BY: *Howard Schoor* P.E. & L.S.
 LIC. # 15434 CHIEF ENGINEERING SURVEYOR
 DATE: MAR 23 1989 SERIAL NO. 719