

REVISIONS		
DATE	P. L. S. NAME	LIC. NO.
05/07/2009	CHARLES J. RIEBEL JR.	29286
12/21/2009	CHARLES J. RIEBEL JR.	29286
04/16/2014	CHARLES J. RIEBEL JR.	29286
08/31/2017	CHARLES J. RIEBEL JR.	29286
06/19/2018	CHARLES J. RIEBEL JR.	29286

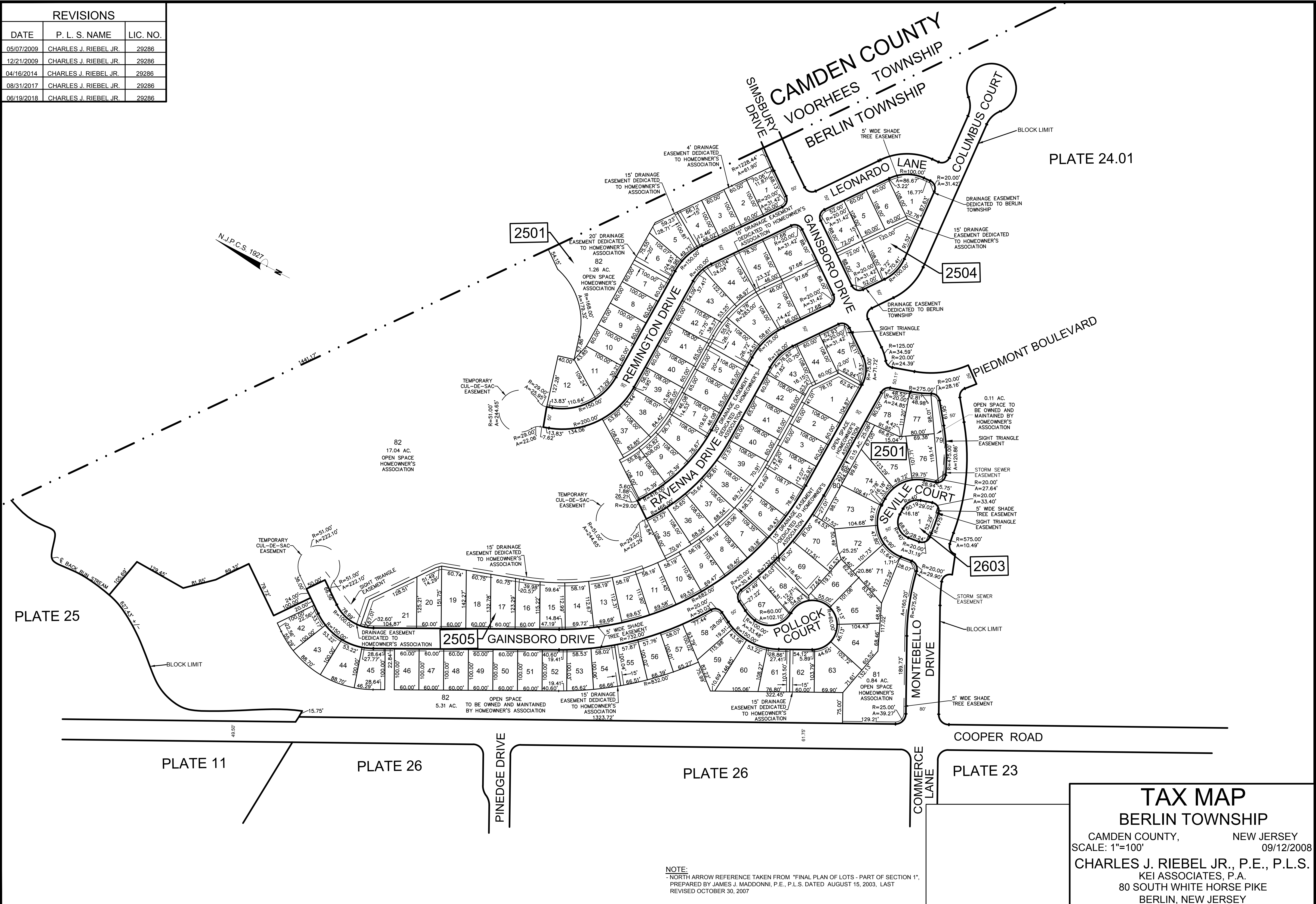


PLATE 24.01

PLATE 25

PLATE 11

PLATE 26

PLATE 26

PLATE 23

TAX MAP
BERLIN TOWNSHIP
 CAMDEN COUNTY, NEW JERSEY
 SCALE: 1"=100' 09/12/2008
 CHARLES J. RIEBEL JR., P.E., P.L.S.
 KEI ASSOCIATES, P.A.
 80 SOUTH WHITE HORSE PIKE
 BERLIN, NEW JERSEY

NOTE:
 - NORTH ARROW REFERENCE TAKEN FROM "FINAL PLAN OF LOTS - PART OF SECTION 1",
 PREPARED BY JAMES J. MADDONNI, P.E., P.L.S. DATED AUGUST 15, 2003, LAST
 REVISED OCTOBER 30, 2007