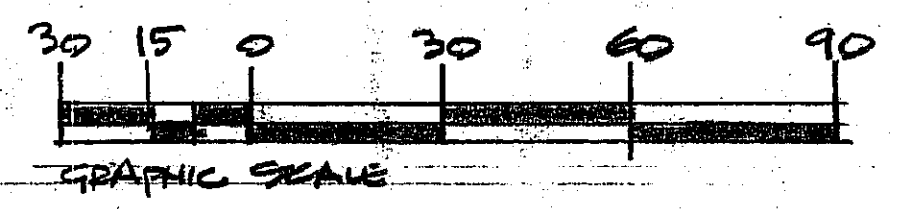


TAX LOT 6.00A
BLOCK 2103
202,289 ± S.F.
4.644 ± ACRES

PARKING SCHEDULE 1
 4 EMPLOYEES REQUIRE 2 SPACES
 4 SPACES PROVIDED PLUS 1 H.C. SPACE

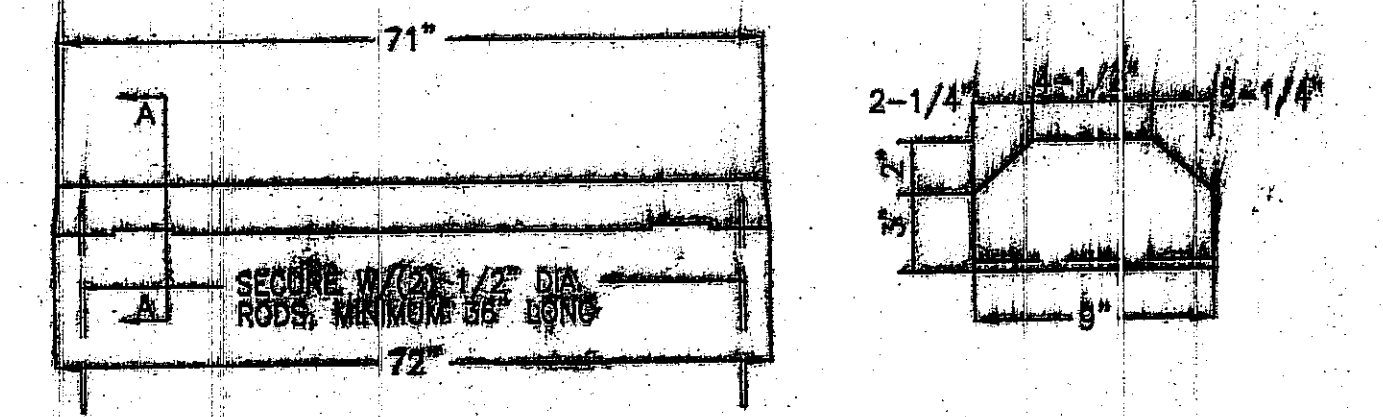
SITE PLAN



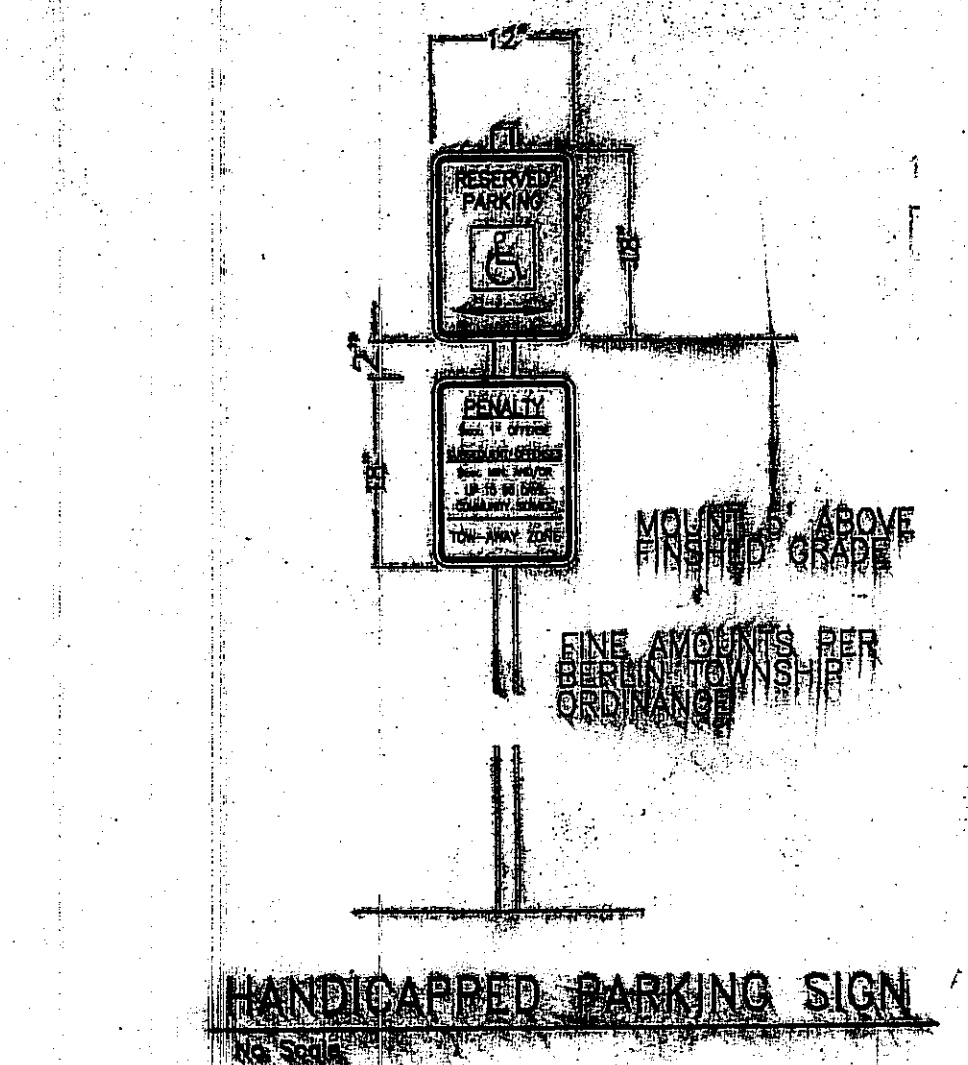
ZONING = LIGHT INDUSTRIAL I-1
 MAXIMUM BUILDING COVERAGE (C40%) = 80,915 S.F.
 ACTUAL TOTAL BUILDING COVERAGE = 9,470 S.F. (LESS THAN 5% OF SITE)
 TOTAL LOT COVERAGE = 17,230 S.F.

NEW BUILDING COVERAGE = 4,000 ± S.F.

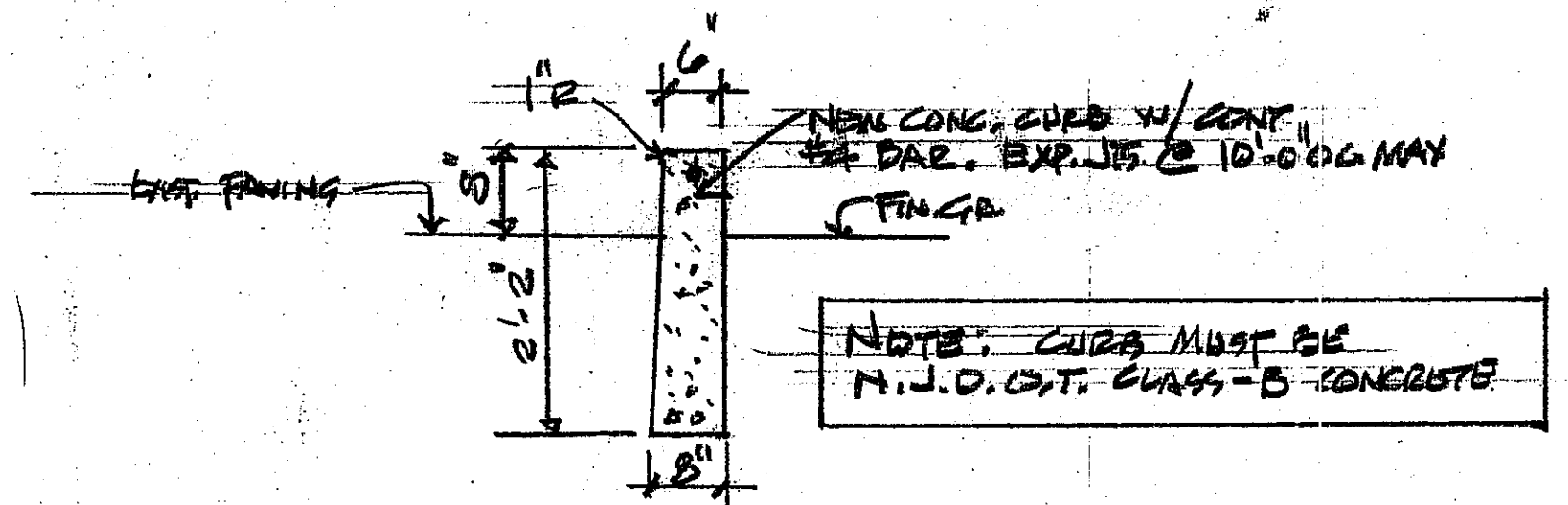
NOTE:
 EXEMPT FROM N.J. STORMWATER
 MANAGEMENT RULES SINCE PROPOSED
 IS LESS THAN 0.25 ACRES.



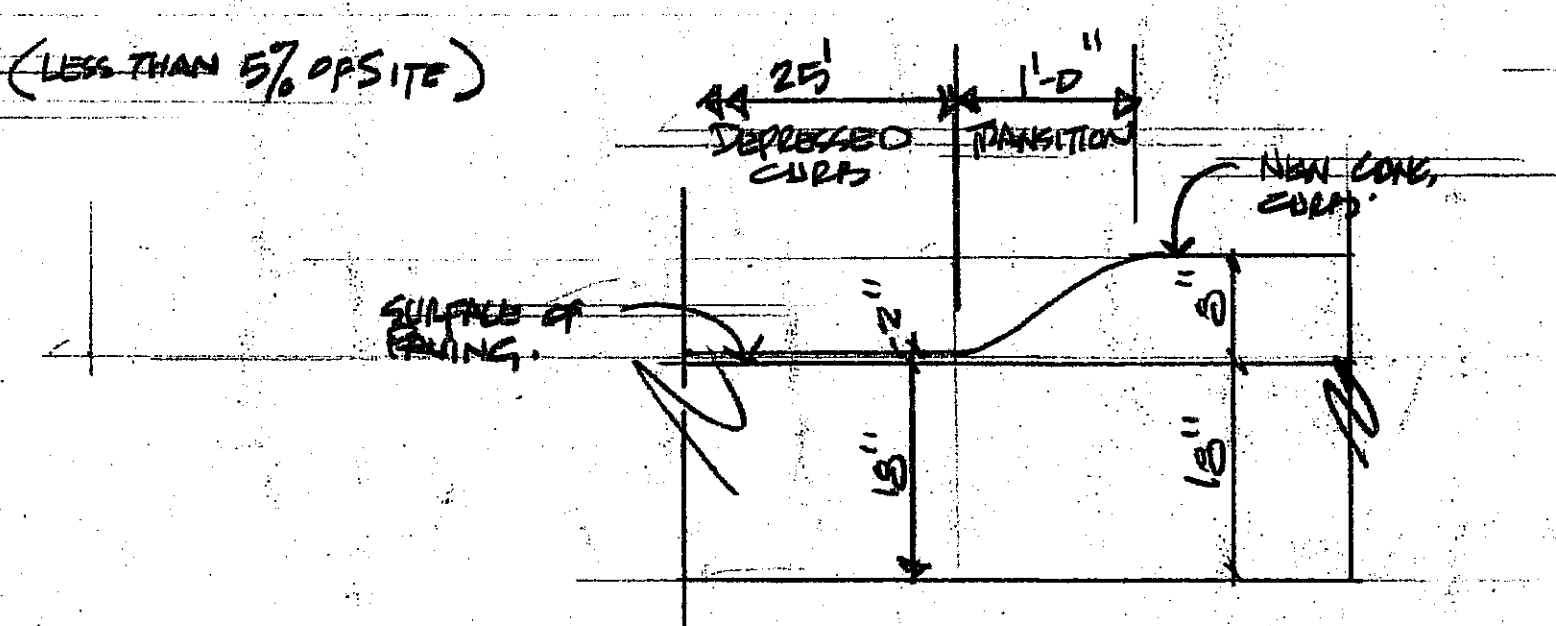
WHEEL STOP DETAIL



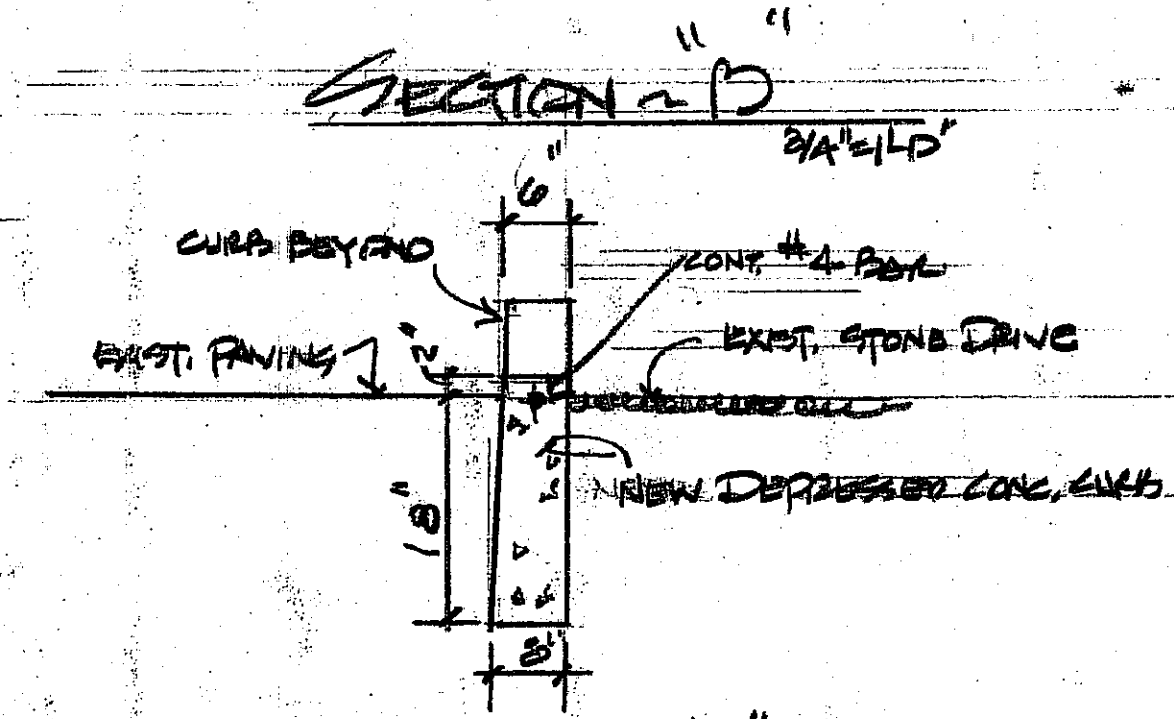
NOTE:
 HANDICAP PARKING SPACE HAS A SURFACE
 SLOPE OF LESS THAN 1% IN EITHER DIRECTION.



NOTE: CURB MUST BE
 N.J.D.O.T. CLASS-B CONCRETE

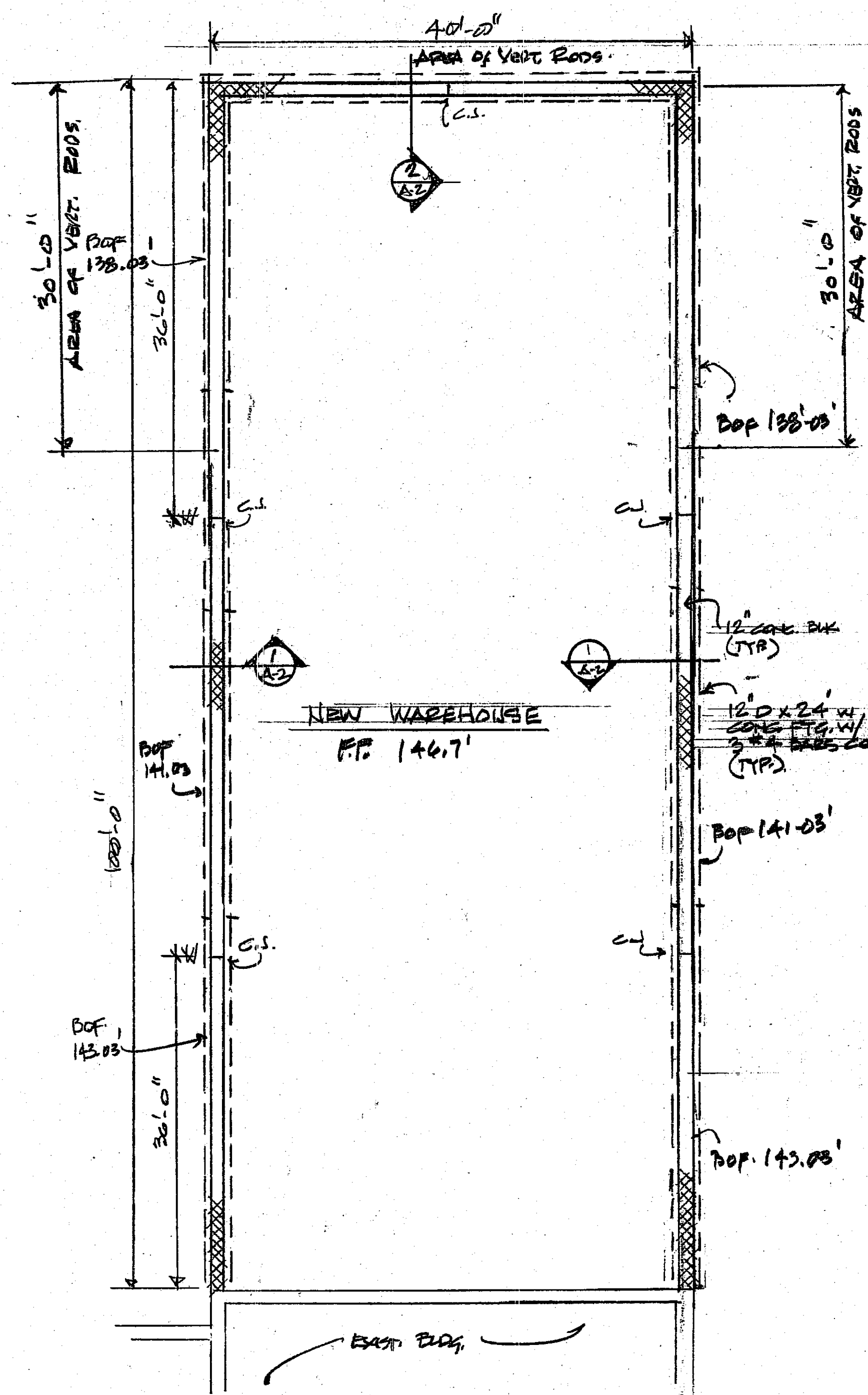


PARTIAL CURB ELEVATION



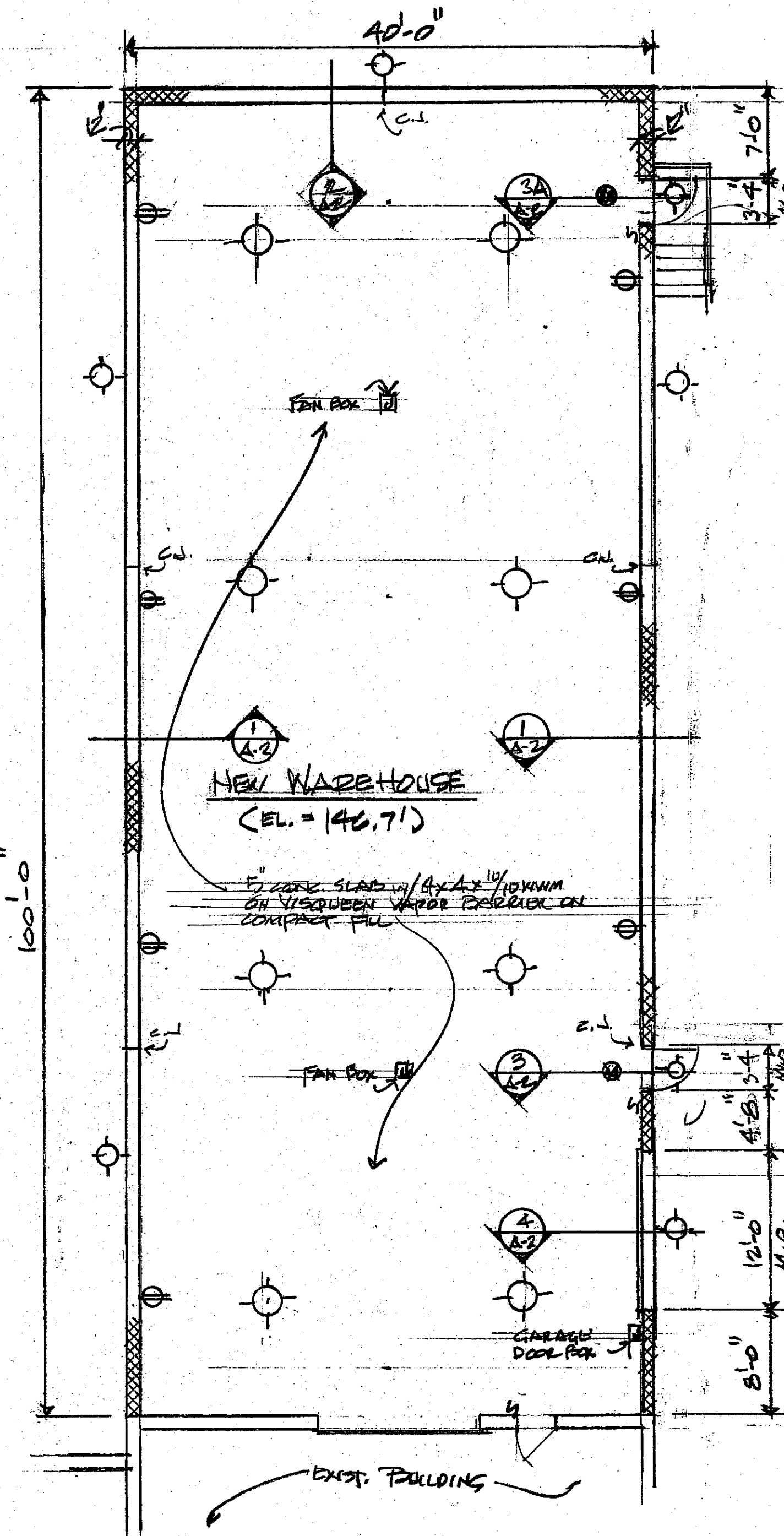
SECTION 'A'

Planner: ANGELOZZI	WAREHOUSE ADDITION ANGELOZZI PROJECT # 100000000	Drawn By: WMS Checked: WMS Date: 5/27/2020 Scale: AS SHOWN
		SITE PLAN Revised: 10/20/2020-12 501

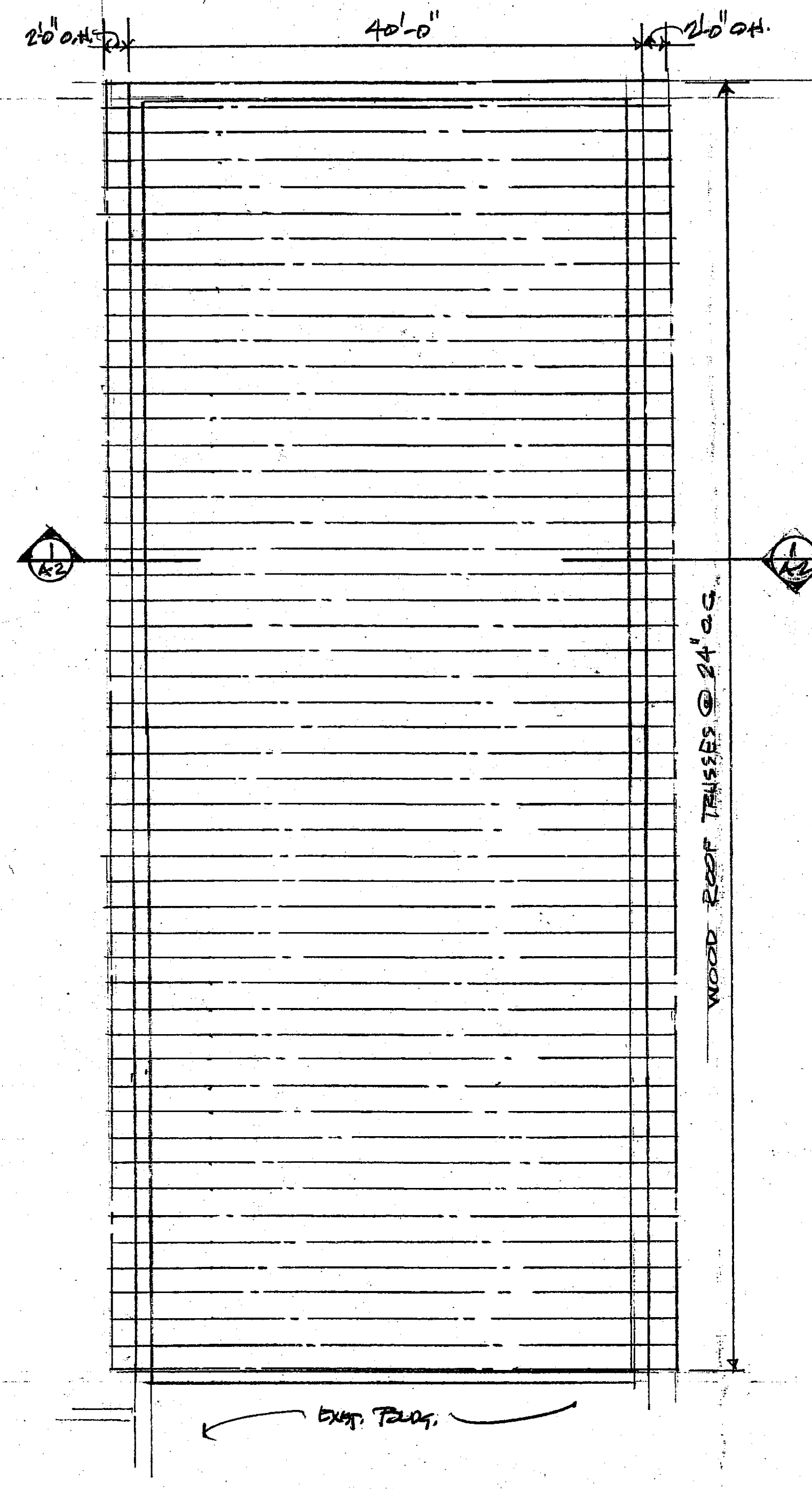


FOUNDATION PLAN
1/8" = 1'-0"

(ALL CONCRETE FOR FOOTINGS & SLAB SHALL BE 3000 P.S.I.)

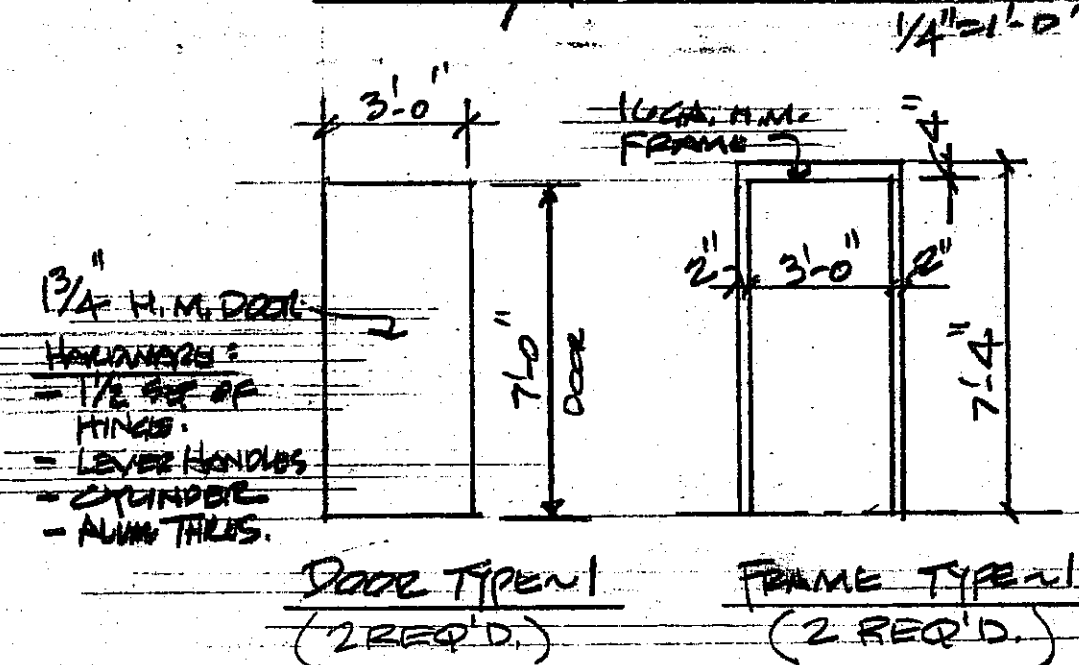


FLOOR PLAN (INCLUDING BROOM/LIGHT)
1/8" = 1'-0"



ROOF FRAMING PLAN
1/8" = 2'-0"

DOORS / FRAMES:



ROOF TRUSS DESIGN:
 PITCH = 4 IN 12
 SPACING = 24' O.C.
 LOAD = 47 PSF W/ 1.99 DURATION FACTOR
 SPAN = 40'-0"
 TOP CHORD = 2x6
 BOTTOM CHORD = 2x4
 TRUSS TYPE = DOUBLE HANE
 TRUSS MANUFACTURER TO SUBMIT SHOP DRAWINGS SHOWING LAYOUT AND TRUSS DESIGN ALONG W/ BUILDING.
 (INSTALL HURRICANE TIE DOWNING ON EACH TRUSS AT BEARING.)

BUILDING DATA:
 CONSTRUCTION TYPE = III
 USE GROUP = S-2
 ALLOWABLE AREA = 26,000 S.F.
 AREA OF ADDITION = 4,000 S.F.
 VOLUME OF ADDITION = 76,000 C.F.
 BUILDING DESIGNED IN ACCORDANCE W/ IBC NEW JERSEY EDITION (LATEST EDITION)

ARCH. NJ C-7469 PA 8-8408	Planner: NJ LI 02913	WAREHOUSE ADDITION ANGELINI PARK EAST TERRAZZO WEST BRIDGE, N.J.	Drawn By: W.A.N. Chd By: W.A.N. Date: Scale: 1/8" = 1'-0" Revised: 2020-12 Comm. No. A-1
WAYNE ALLAN NEVILLE, AIA Registered Architect - Professional Planner 56 Putters Lane, Mays Landing, New Jersey 08330 (856) 767-7667 (856) 767-9534 fax			

