



## FRAME-R-UB-DU-NG-3.0 (DB 7790)



**Bank of America**  
 FRAME-R-UB-DU-NG-3.0 (DB 7790)  
 Series 3591 Kiosk  
 Shown with Diebold 7790  
 March 15, 2019  
 B\Bofa\3591\_11x17\_DB-7790\_BofA



D

C

B

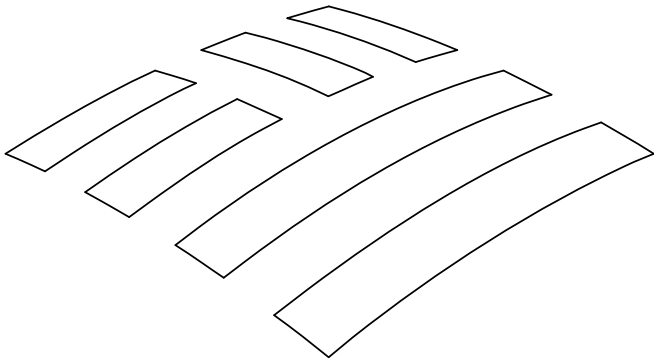
A

D

C

B

A





# BANK OF AMERICA

## UNIVERSAL REMOTE KIOSK ~ FRAME-R-UB-DU-NG-3.0 BUILDING

ITEMS TO BE INSTALL IN FIELD (SUBJECT TO LOCAL CODE)
1. Kiosk component connection to foundations.
2. Roof to kiosk component connections.
3. Electrical meter connection and disconnect.
4. All site work including foundations.
Notes
1. This kiosk will be located a distance greater than 10'-1" from property lines or interior lot lines.
2. This kiosk WILL NOT be located in a flood prone area
3. This kiosk shall comply with the Americans with Disabilities ACT (ADA).
4. The owner shall post a suitable placard, securely fastened in place, readily visible with all design criteria information.
5. Unless noted otherwise materials shall be as follows: ALUMINUM SHAPES ~ 6061-T6 ALUMINUM SHEET ~ 5052- H32 STEEL SHAPES ~ A500 STEEL PLATE ( NOT BENT ) ~ A36 STEEL SHEET ( BENT ) ~ A635-1010
6. Bolts: Grade 5 unless noted otherwise.
7. All welds by a certified welder in conformance with "AWS" 1.1 standard for aluminum, and "AWS" 1.2 standard for steel
8. Contractor to compact base of foundation prior to concrete placement to ensure allowable bearing of 3000 PSF is obtained.
9. All concrete in accordance with ACI standards- air entrained 4-6%.
10. All reinforcing steel to be AASTM A615 Fy=60 KSI

DRAWING INDEX		
DWG. No.	Drawing Title	REV.
	Rendering	A
TS0.10	DB 7790 Title Sheet~ Manufacturer information	A
TS0.2	Title Sheet ~ Kiosk Schedule	A
A01.0	Building Elev ations	A
A02.0	Kiosk Framing Details and access doors	A
A03.0	Exterior Panel Details	A
A04.0	Horizontal Sections	A
A05.0	Equipment Cabinet Details	A
A06.0	DB 7790: ATM & Filler Panel	A
A07.0	DB 7790: ATM Service Position Details	A
A08.0	Lettering and Logo Details	A
E1	Electrical Specifications,Lighting,Symbols & Notes	A
E2	Electrical Service Options	A
E3	Utility Company Service Options	A
S1	Kiosk Frame ~ Structural Steel Details	A
S2	Aluminum Canopy ~ Sections & Details	A
SITE1	Field Connection Details ~ Frames only	A
SITE2	Field Connection Details ~ Showing Signage	A
SITE3	4'-6" exposed pad ~ Shallow Foundation	A
SITE4	4'-6" exposed pad ~ Deep Foundation	A

KIOSK DESIGN CRITERIA	
This kiosk shall conform to the following codes:	
Initially designed for the DB7790 ATM to be installed and to meet codes required for all lower 48 states.	
Occupancy Load:	none
Construction Type:	11 b
Height of Kiosk 11'-9 5/8" (O.A)	10'-8" (Clearance)
Number of Stories:	1
Design Loads:	This kiosk is constructed to withstand the following loads:
ROOF DEAD LOAD	10 PSF
ROOF LIVE/SNOW LOAD	30 PSF
FLOOR DEAD LOAD	15 PSF
FLOOR LIVE LOAD	100 PSF
GROUND SNOW LOAD	30 PSF
WIND SPEED & EXPOSURE	180 MPH, EXP. C
SEISMIC ACCELERATION	Ss=40%/: S.=10%
Limit of smoke density of interior finishes ~ 450	
Toxicity and flame spread rating - 50	

UNLESS OTHERWISE SPECIFIED DIMENSIONS ARE IN INCHES AND TOLERANCES ARE: FRACTION = +1/32 3 DECIMAL = +.005 2 DECIMAL = +.01 ANGLE = +.5		 <b>COMPANION</b>	
APPROVALS		DATE	
ENGINEERED: JJH		03/05/19	
DRAWN: JJH		03/05/19	
CHECKED: BH		03/05/19	
 THIRD ANGLE PROJECTION		SCALE ~ 1:8 DO NOT SCALE	SHEET SIZE B
		Customer ID_ATM_Sheet name <b>DB 7790 ATM Kiosk ~ Title Sheet</b>	
		FRAME-R-UB-DU-NG-3.0_TS0.10	REVISION A
645 WEST 200 NORTH - NORTH SALT LAKE, UTAH 84054		FAX # (801) 936-1563	TELEPHONE # (801) 936-8082
		SHEET: 2 of 20	

D

C

B

A

D

C

B

A

Door & Hardware Schedule						
1. Doors						
NO.	DOOR TYPE	DOOR LOCATION	DOOR ELEV	DOOR DIMENSIONS (W X H X THICK)	DOOR FINISH	DOOR HARDWARE
01	Fabricated	Rear ( 2x)		1'-5 5/8" x 2'-8 5/8" x 1"	DOOR: Paint to match exterior Garbo Silver finish	LOCKSET: - Camlock HINGE: AluminumI Piano Hinge
02	Fabricated	Departure		1'-11" x 5'-8 1/4" x 1-1/2"	DOOR: Paint to match exterior B of A Red finish	LOCKSET: Camlock HINGE: Soss DOOR HANDLE: Rockwood #94P finish US32D/316
NOTE: ALL HARDWARE MOUNTING HEIGHTS SHALL CONFORM TO ALL APPLICABLE STATE AND LOCAL ACCESSIBILITY CODES.						

FINISH SCHEDULE					
PAINT (P):					
SYMBOL	DESCRIPTION	MANUFACTURER	MODEL NUMBER	COLOR	LOCATION
P-1	Urethane Formula	Mathews Paint Co.	MP02650	Garbo Silver	Kiosk Faces Glass Finish
P-2	Urethane Formula	Mathews Paint Co.	MP58477	Dark Gray	Canopy Reveal & Toe Kick
P-3	Urethane Formula	Mathews Paint Co.	MP 21314 SOA 6194 SP	Champagne Metallic	Aluminum Canopy
P-4	Urethane Formula	Mathews Paint Co.	MP 49696	BOA Red	kiosk sides & Frame
P-5	Urethane Formula	Mathews Paint Co.	MP 10252 PMS 187C	DarkRed	Kiosk Side Graphic
P-6	4mm ACM	Alucobond	Natural Brushed 50	S.S. Brushed	Kiosk Front ATM Area

EQUIPMENT	MANUFACTURER/SUPPLIER	MODEL/PART#
THERMO ELECTRIC COOLING/HEATING	WATRONIX INC	INB 720-24-AACH
ATM	DB	7790
EXTERIOR DOWNLIGHTING	G.E.	GEWH9640BAT
POWER SUPPLY, 180 AMP	G.E.	Tetra MiniMax, GEPS12-180U
PERIMETER (red Halo) LIGHTING	Principal	LED#PL-LT1-RD1-P-8008
MAIN SIGNAGE BACKLIGHTING	G.E.	7100K, Tetra MiniMax, GEMM712
CANOPY DOWNLIGHTING	G.E.	4000K, Batten Luminaire, 8 ft. H.O., GEWH9640BAT
INTERIOR LIGHT	CREE	PORCELAIN BASE W/ LED BULB
365 DAY TIME SWITCH	INTERMATIC	ET90115CR (CS#0140014A)
ELECTRICAL PANEL	EATON	BR1616-8100
MAIN BREAKER	EATON	BR100
BRANCH BREAKER	EATON	BR
APPROACH VENT	ATLANTA SUPPLY	RAW 28x28 (CS 0450069A)
DEPARTURE VENT	ATLANTA SUPPLY	RAW 18x28 (CS 0450070A)
REAR VENT	ATLANTA SUPPLY	RAW 30x12 (CS 0450068A)

I:\3619\13591\_Engineering\SW Fabrication\Drawings\13591\_BoA UB-NG Drawing Approval - Dbl7901

Printed Date: 3/6/2019

THE INFORMATION CONTAINED IN THIS DRAWING IS THE SOLE PROPERTY OF COMPANION SYSTEMS. ANY REPRODUCTION IN PART OR WHOLE WITHOUT THE WRITTEN PERMISSION OF COMPANION SYSTEMS IS PROHIBITED.

UNLESS OTHERWISE SPECIFIED DIMENSIONS ARE IN INCHES AND TOLERANCES ARE:  
FRACTION =  $\pm 1/32$   
3 DECIMAL =  $\pm .005$   
2 DECIMAL =  $\pm .01$   
ANGLE =  $\pm .5$

APPROVALS


ENGINEERED: JJH

DRAWN: JJH

CHECKED: BH

THIRD ANGLE PROJECTION

DATE  
03/05/19  
03/05/19  
03/05/19

COMPANION

Kiosk Schedule

Customer ID\_ATM\_Sheet name

FRAME-R-UB-DU-NG-3.0\_TS0.2

REVISION  
A

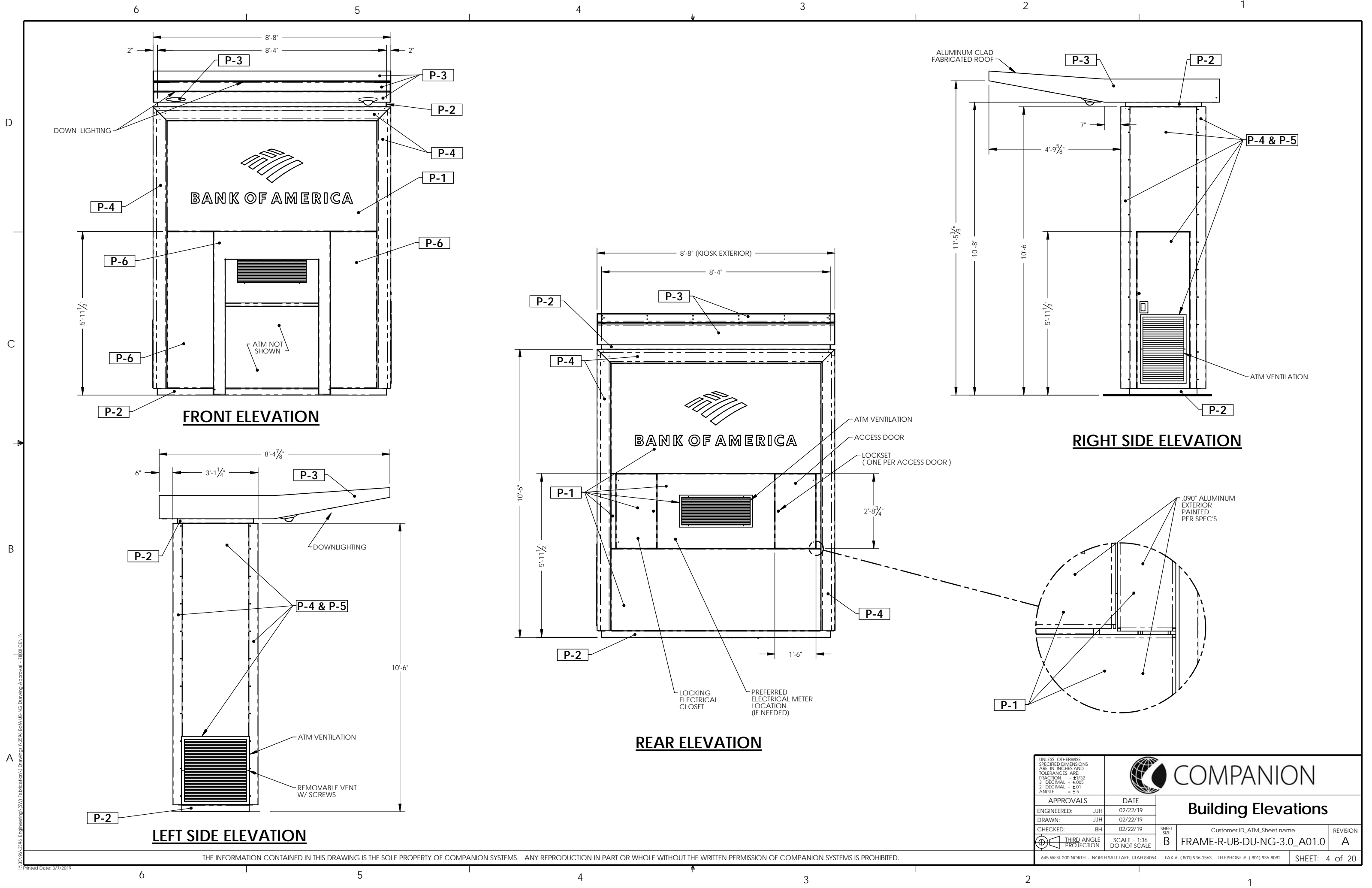
SHEET SIZE  
B

SCALE = 1:30  
DO NOT SCALE

645 WEST 200 NORTH - NORTH SALT LAKE, UTAH 84054



FAX # (801) 936-1563 TELEPHONE # (801) 936-8082

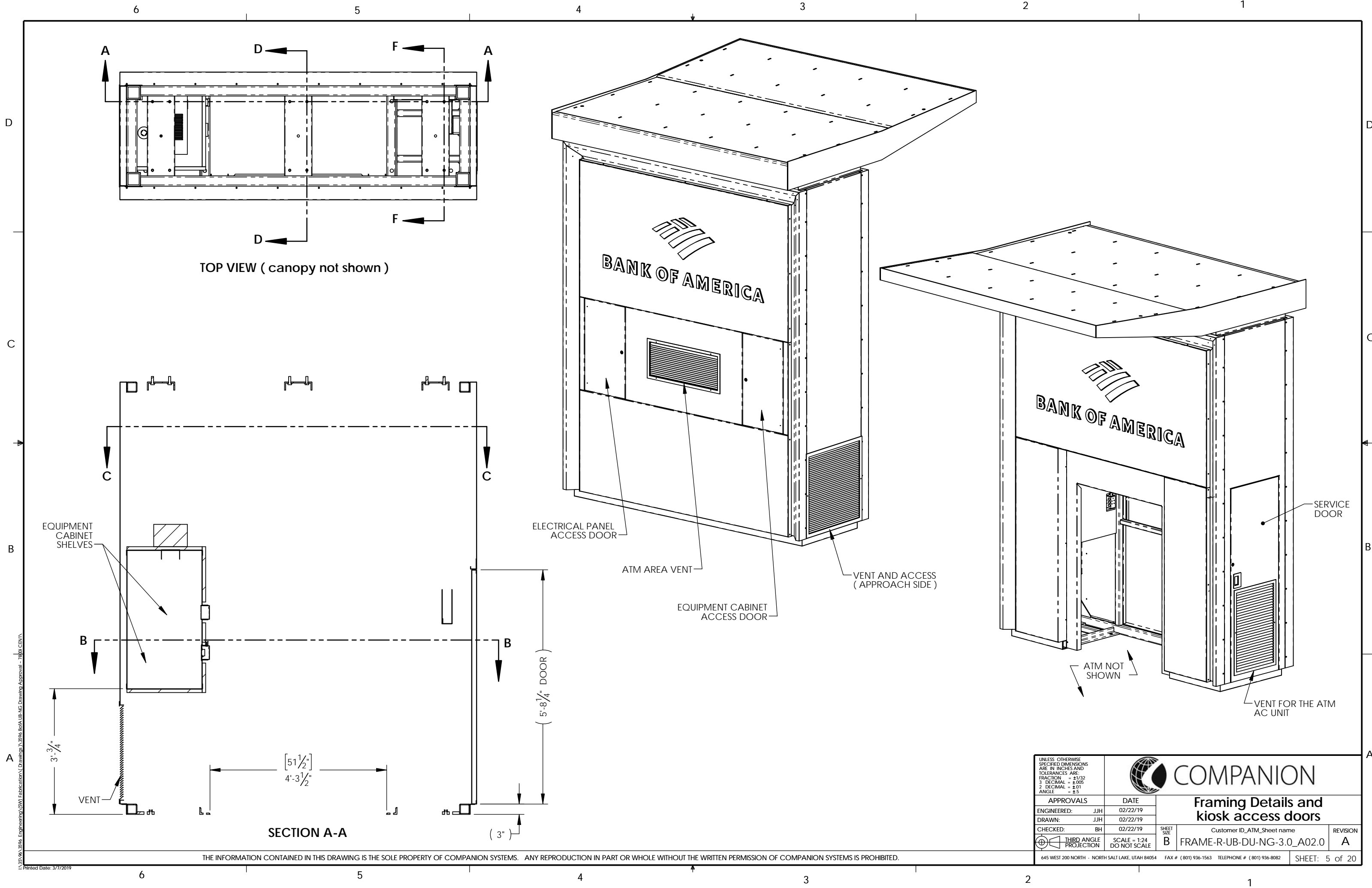
SHEET: 3 of 20



\\385va\385va\_Engineering\385va\_Fabrication\Drawings\385va\_BoA\UB-NG Drawing Approval - 78801.CDW

THE INFORMATION CONTAINED IN THIS DRAWING IS THE SOLE PROPERTY OF COMPANION SYSTEMS. ANY REPRODUCTION IN PART OR WHOLE WITHOUT THE WRITTEN PERMISSION OF COMPANION SYSTEMS IS PROHIBITED.

UNLESS OTHERWISE SPECIFIED DIMENSIONS ARE IN INCHES AND TOLERANCES ARE: FRACTION = ±1/32 3 DECIMAL = ±.005 2 DECIMAL = ±.01 ANGLE = ±.5				COMPANION	
APPROVALS		DATE		<h1>Building Elevations</h1>	
ENGINEERED: JJH		02/22/19			
DRAWN: JJH		02/22/19			
CHECKED: BH		02/22/19			
 THIRD ANGLE PROJECTION		SCALE = 1:36 DO NOT SCALE		Customer ID_ATM_Sheet name <b>FRAME-R-UB-DU-NG-3.0_A01.0</b>	
645 WEST 200 NORTH - NORTH SALT LAKE, UTAH 84054		FAX # (801) 936-1563 TELEPHONE # (801) 936-8082		REVISION <b>A</b>	
Printed Date: 3/7/2019				SHEET: 4 of 20	

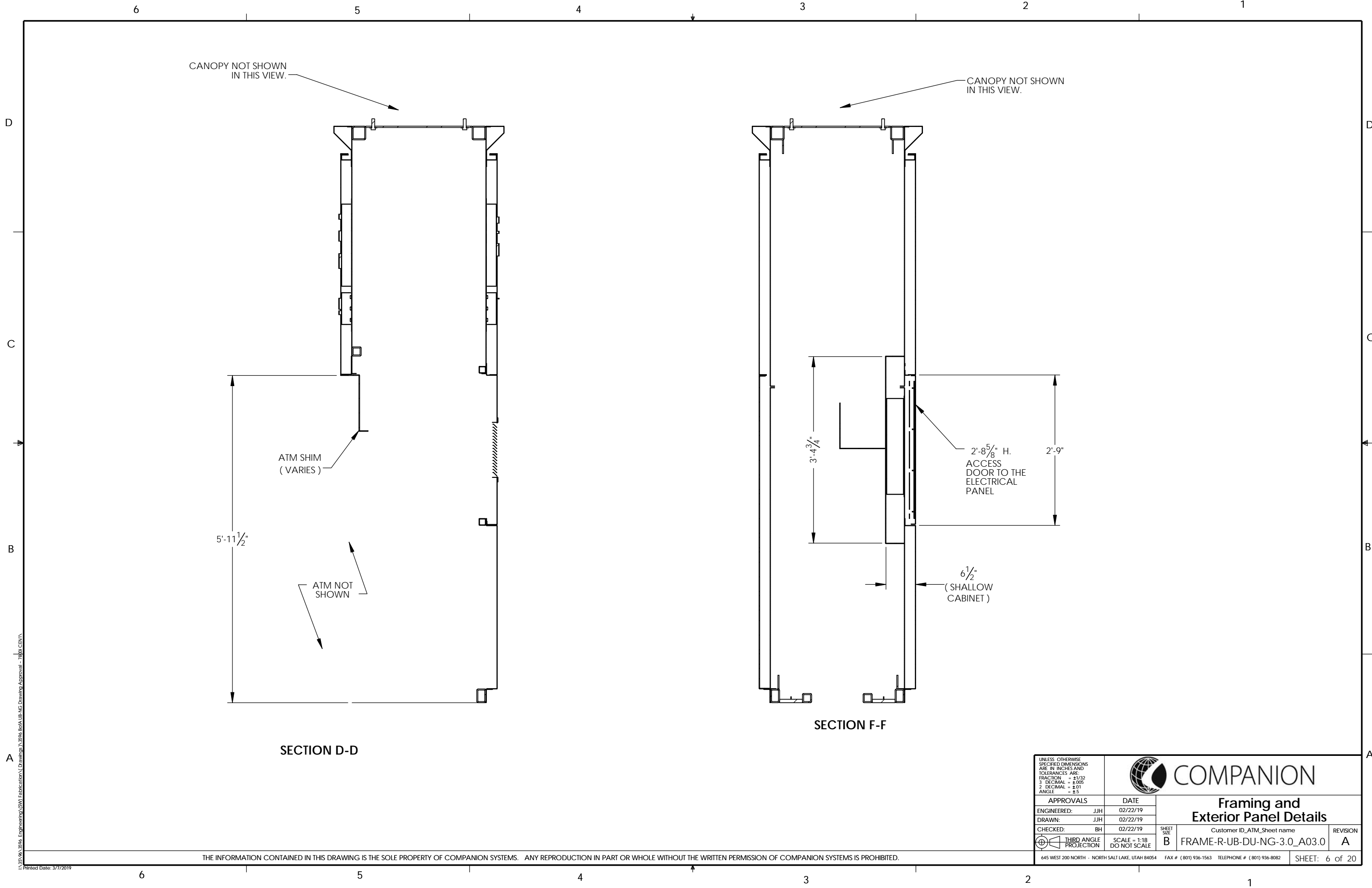


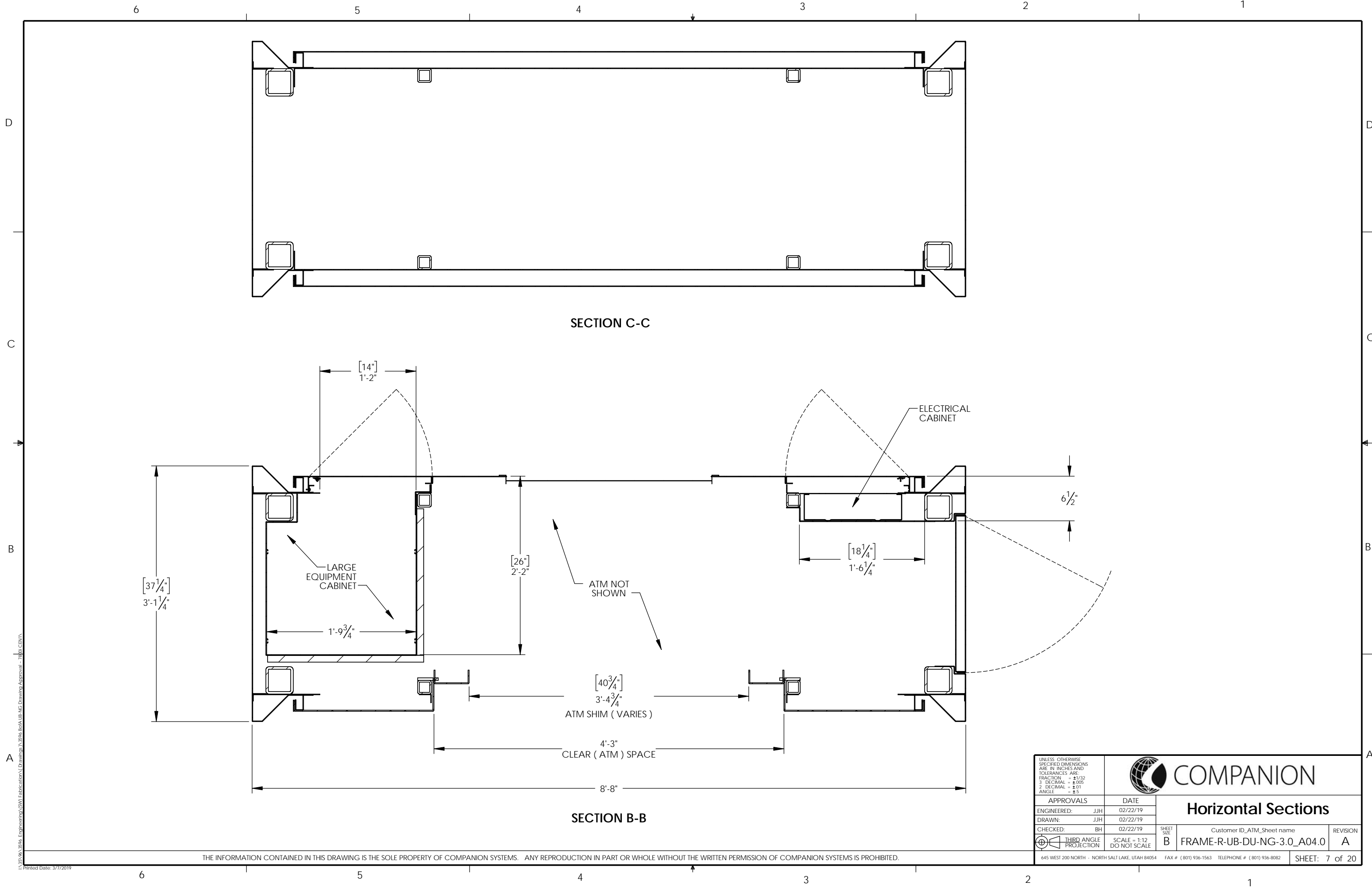
I:\3556\3556\_Engineering\3556\_Fabrication\Drawings\3556\_BoFA UB-NG Drawing Approval - 78901.CDW

Printed Date: 3/7/2019

THE INFORMATION CONTAINED IN THIS DRAWING IS THE SOLE PROPERTY OF COMPANION SYSTEMS. ANY REPRODUCTION IN PART OR WHOLE WITHOUT THE WRITTEN PERMISSION OF COMPANION SYSTEMS IS PROHIBITED.


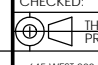
<small>UNLESS OTHERWISE SPECIFIED DIMENSIONS ARE IN INCHES AND TOLERANCES ARE: FRACTION = ±1/32 3 DECIMAL = ±0.005 2 DECIMAL = ±0.1 ANGLE = ±5</small>					
<b>APPROVALS</b>		<b>DATE</b>			
ENGINEERED: JJH	02/22/19	<b>Framing Details and kiosk access doors</b>			
DRAWN: JJH	02/22/19				
CHECKED: BH	02/22/19				
	THIRD ANGLE PROJECTION	SCALE = 1/24 DO NOT SCALE	<small>SHEET SIZE</small> <b>B</b>	<small>Customer ID_ATM_Sheet name</small> <b>FRAME-R-UB-DU-NG-3.0_A02.0</b>	<small>REVISION</small> <b>A</b>
<small>645 WEST 200 NORTH - NORTH SALT LAKE, UTAH 84054</small>		<small>FAX # (801) 936-1563</small>	<small>TELEPHONE # (801) 936-8082</small>	<small>SHEET: 5 of 20</small>	

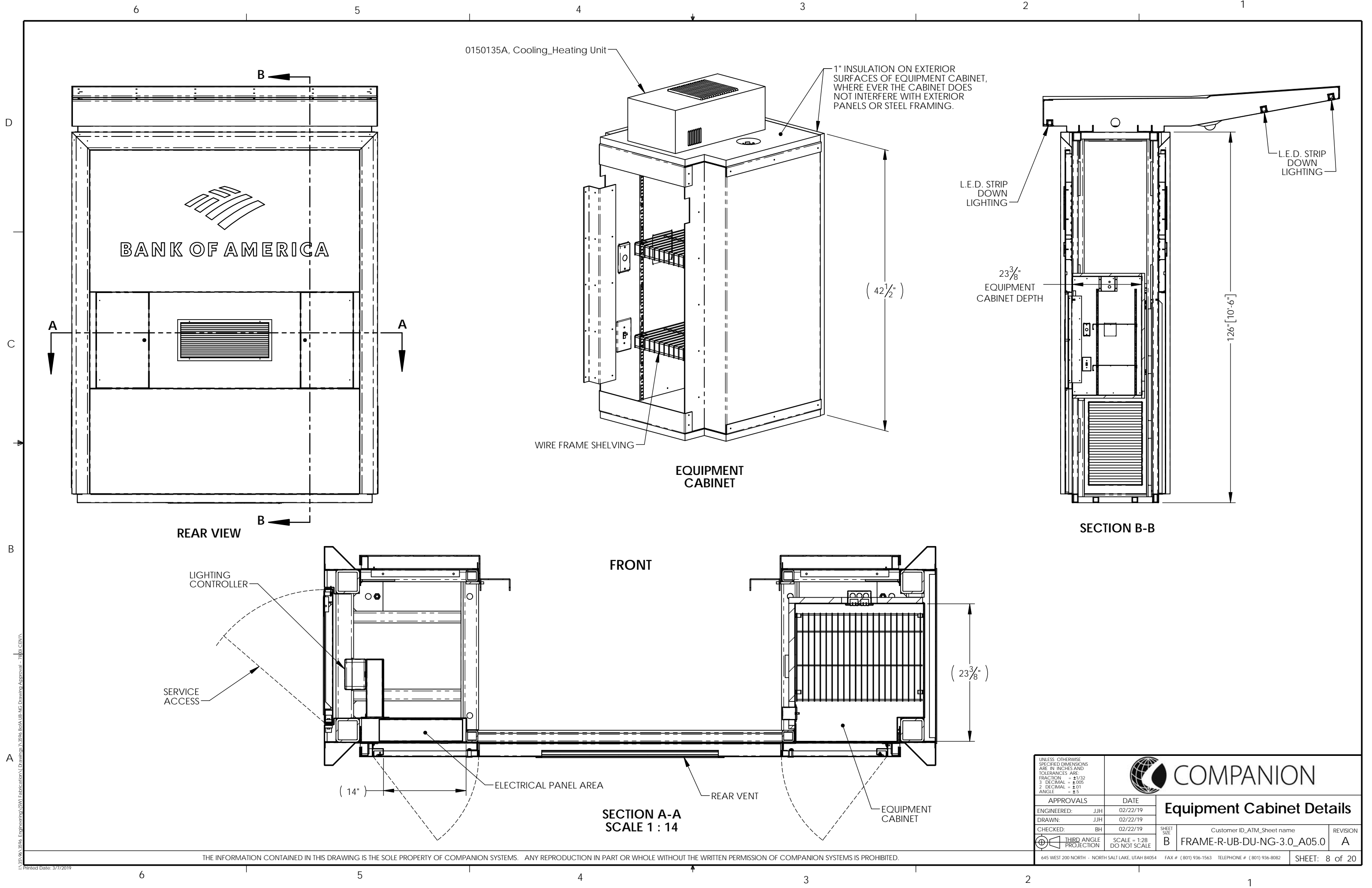




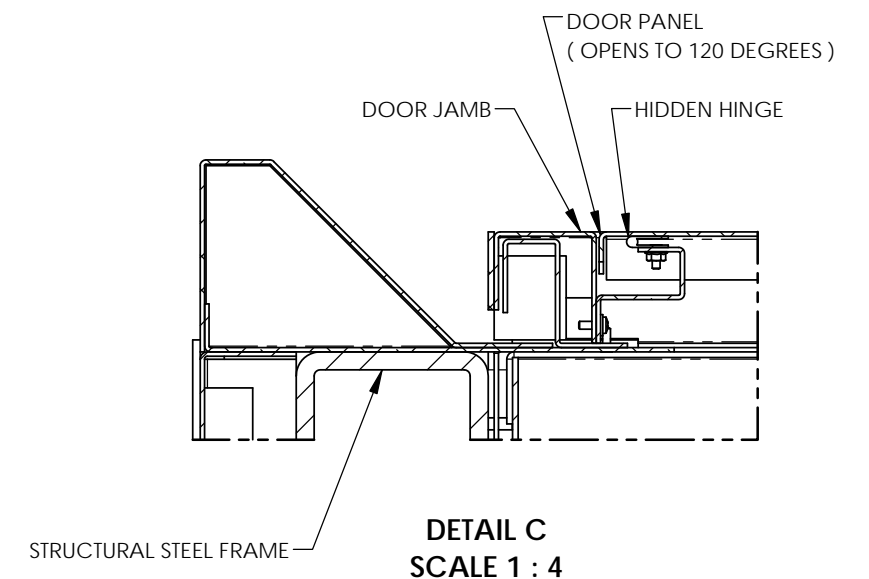
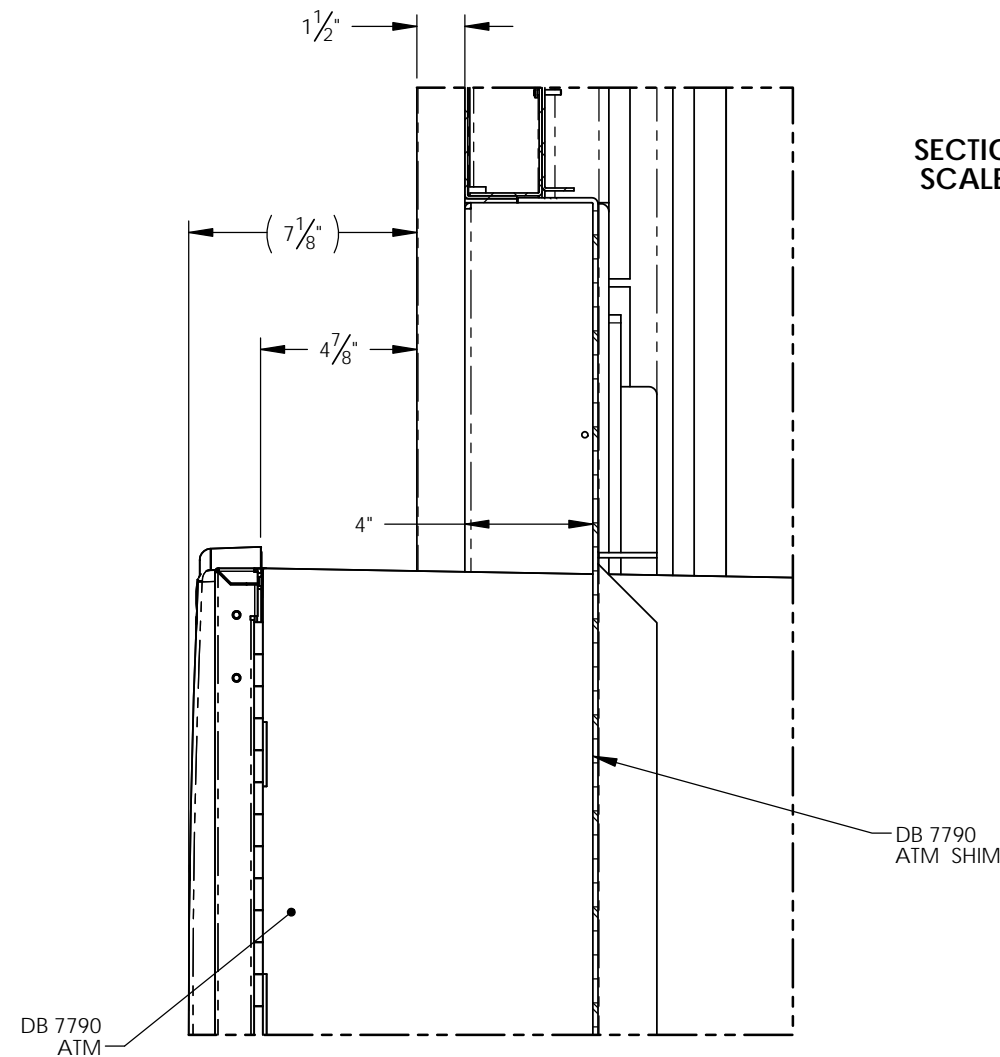
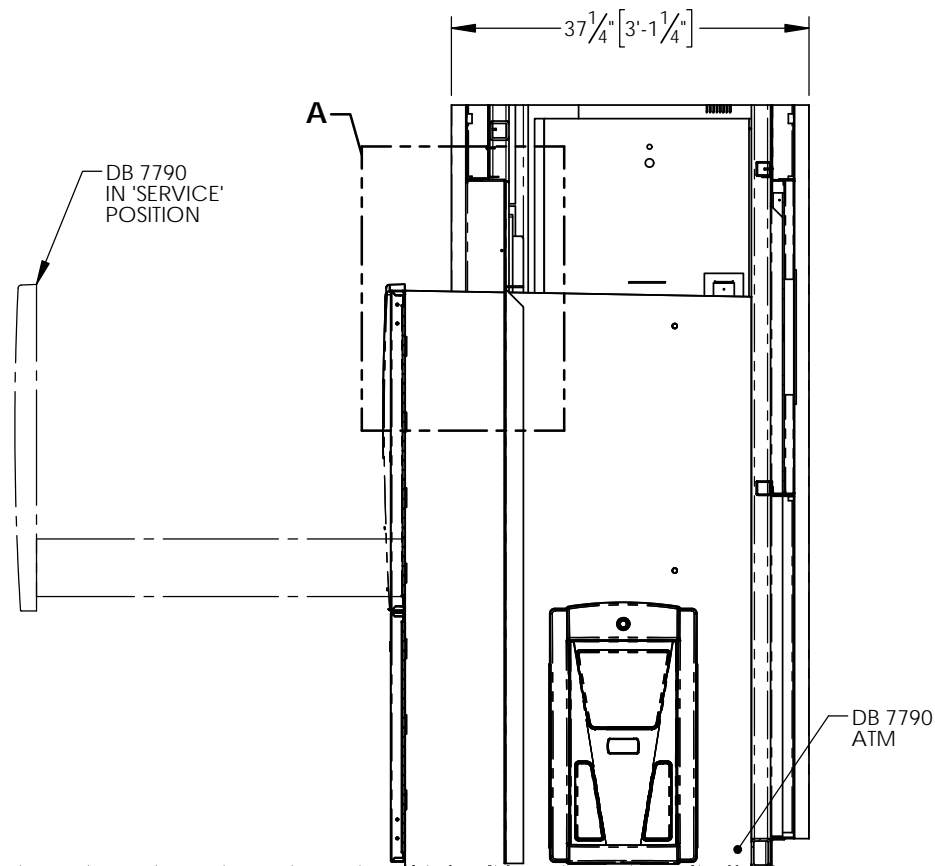
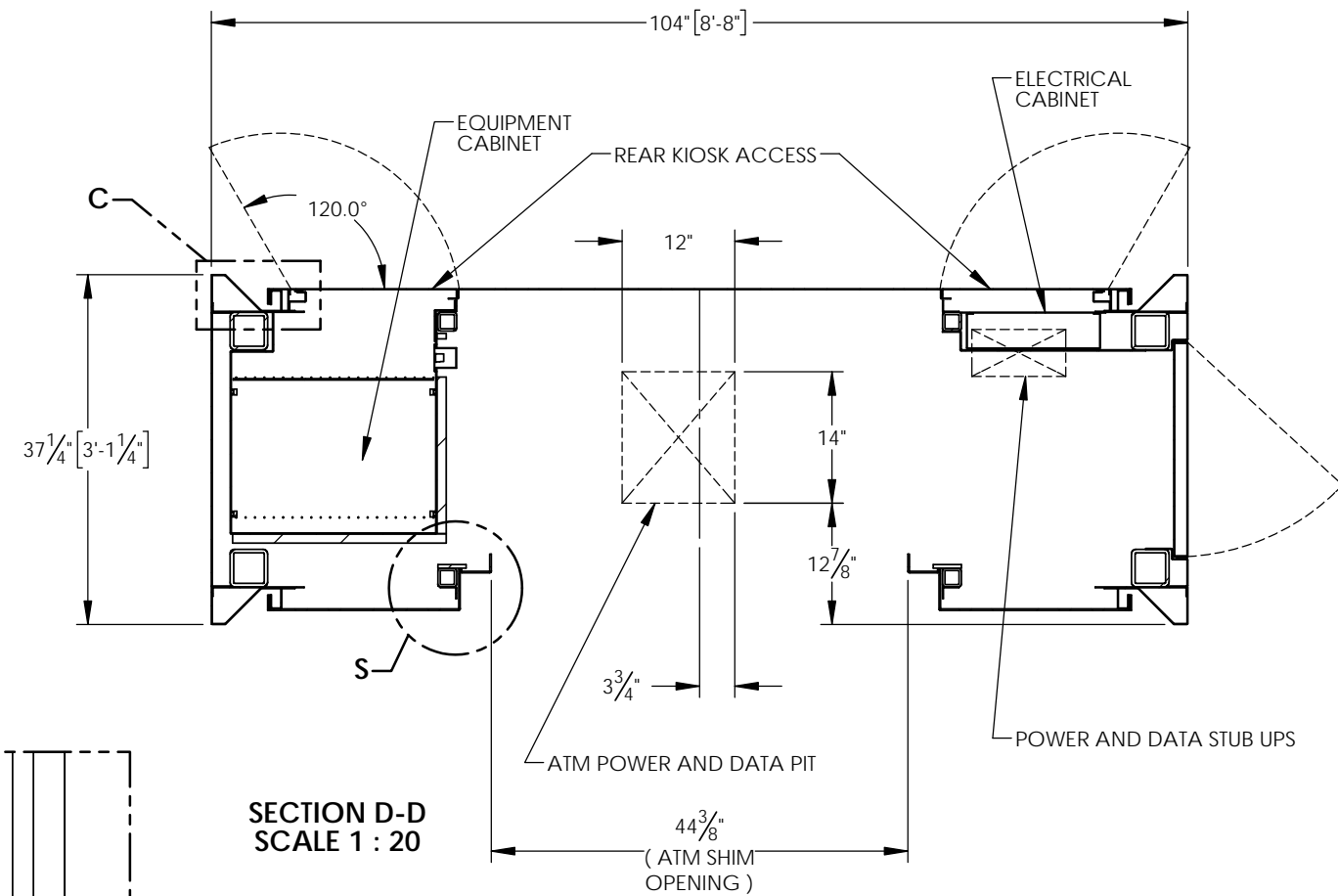
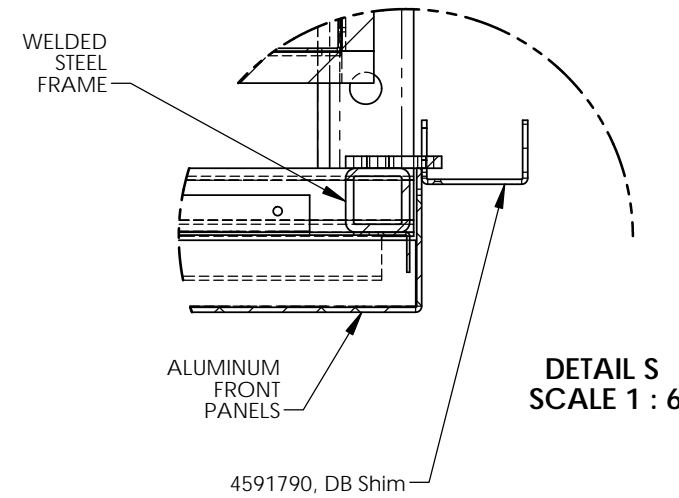
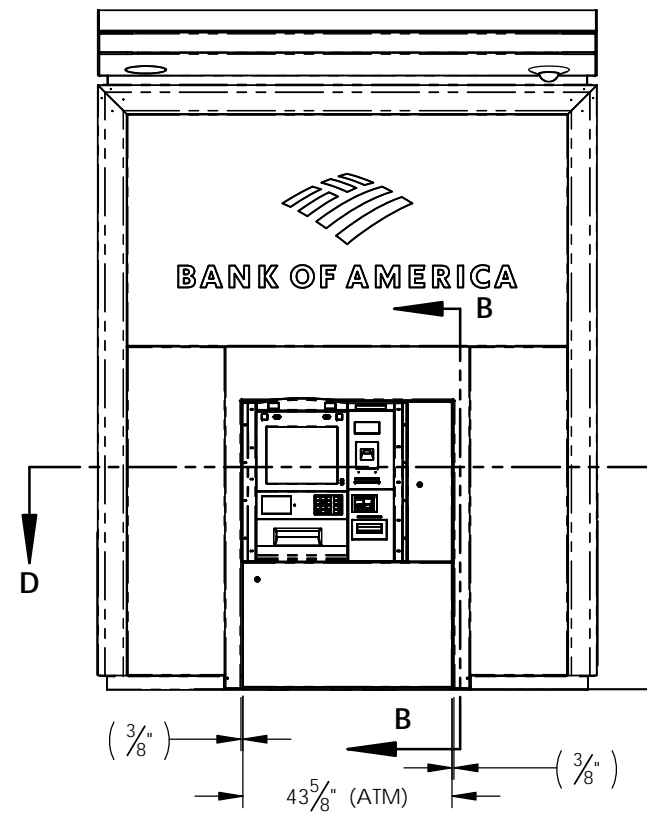
\\385\\en\\3894\_Engineering\\S\\0 Fabrication\\Drawings\\3894\_BoA\\UB-NG Drawing Approval - 78801.CB01  
Printed Date: 3/7/2019



THE INFORMATION CONTAINED IN THIS DRAWING IS THE SOLE PROPERTY OF COMPANION SYSTEMS. ANY REPRODUCTION IN PART OR WHOLE WITHOUT THE WRITTEN PERMISSION OF COMPANION SYSTEMS IS PROHIBITED.

<small>UNLESS OTHERWISE SPECIFIED DIMENSIONS ARE IN INCHES AND TOLERANCES ARE: FRACTION = ±1/32 3 DECIMAL = ±.005 2 DECIMAL = ±.01 ANGLE = ±5</small>		 <b>COMPANION</b>	
<b>APPROVALS</b>		<b>DATE</b>	
ENGINEERED: JJH		02/22/19	
DRAWN: JJH		02/22/19	
CHECKED: BH		02/22/19	
 <b>THIRD ANGLE PROJECTION</b>		SCALE = 1:12 DO NOT SCALE	
<b>SHEET SIZE</b> B		Customer ID_ATM_Sheet name <b>FRAME-R-UB-DU-NG-3.0_A04.0</b>	
		<b>REVISION</b> A	
645 WEST 200 NORTH - NORTH SALT LAKE, UTAH 84054		FAX # (801) 936-1563 TELEPHONE # (801) 936-8082	
SHEET: 7 of 20			









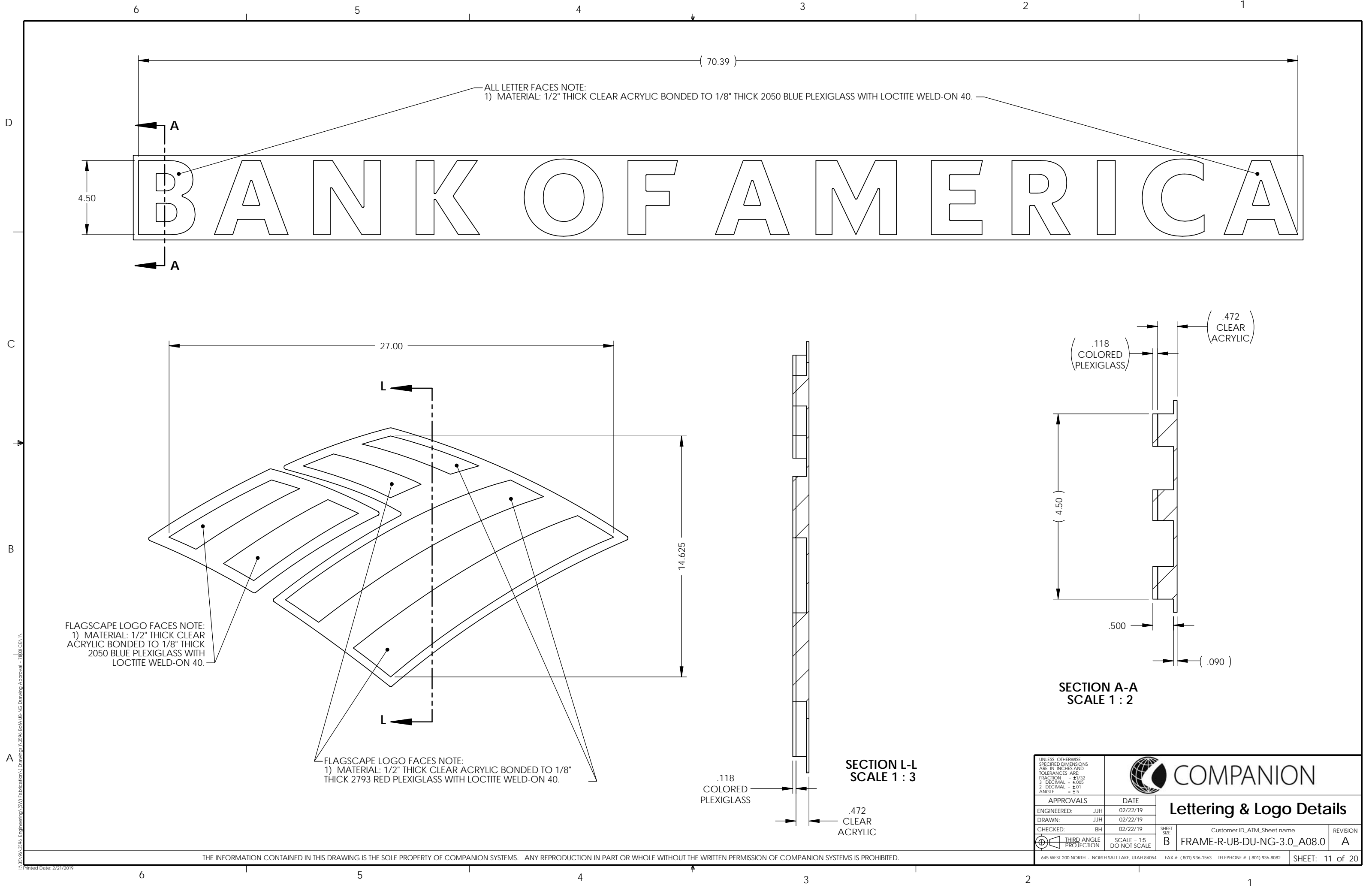
UNLESS OTHERWISE SPECIFIED DIMENSIONS ARE IN INCHES AND TOLERANCES ARE: FRACTION = $\pm 1/32$ 3 DECIMAL = $\pm .005$ 2 DECIMAL = $\pm .01$ ANGLE = $\pm .5^\circ$	 <b>COMPANION</b>	
<b>APPROVALS</b> ENGINEERED: JJH DRAWN: JJH CHECKED: BH	<b>DATE</b> 03/05/19 03/05/19 03/05/19	<b>DB 7790 ATM &amp; Filler Panel</b>
 <b>THIRD ANGLE PROJECTION</b>	<b>SCALE = 1:40 DO NOT SCALE</b>	
645 WEST 200 NORTH - NORTH SALT LAKE, UTAH 84054		SHEET SIZE <b>B</b>
FAX # (801) 936-1563 TELEPHONE # (801) 936-8082		Customer ID_ATM_Sheet name <b>FRAME-R-UB-DU-NG-3.0_A06.0</b>
SHEET: 9 of 20		REVISION <b>A</b>



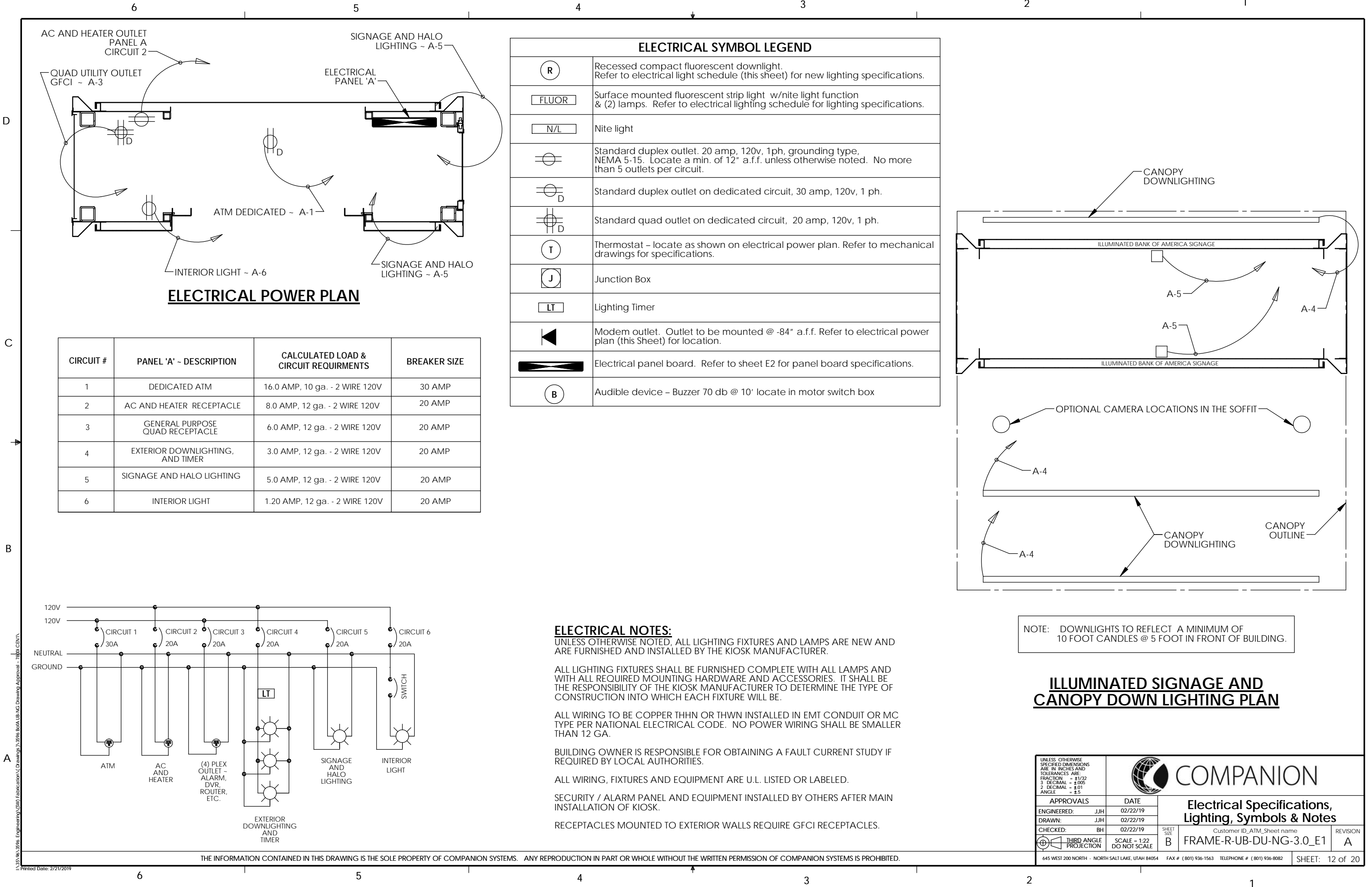
\\365v1\3591\_Engineering\SW Fabrication\Drawings\3591 BoA UB-NG Drawing Approval - DB7790  
Printed Date: 3/6/2019

THE INFORMATION CONTAINED IN THIS DRAWING IS THE SOLE PROPERTY OF COMPANION SYSTEMS. ANY REPRODUCTION IN PART OR WHOLE WITHOUT THE WRITTEN PERMISSION OF COMPANION SYSTEMS IS PROHIBITED.

<small>UNLESS OTHERWISE SPECIFIED DIMENSIONS ARE IN INCHES AND TOLERANCES ARE: FRACTION = ±1/32 3 DECIMAL = ±.005 2 DECIMAL = ±.01 ANGLE = ±.5</small>		 <b>COMPANION</b>		
<b>APPROVALS</b>		<b>DATE</b>		
ENGINEERED: JJH	03/05/19	<b>Service Position Details</b>		
DRAWN: JJH	03/05/19			
CHECKED: BH	03/05/19			
 <b>THIRD ANGLE PROJECTION</b>	<b>SCALE = 1:22 DO NOT SCALE</b>	<small>SHEET SIZE</small> <b>B</b>	<small>Customer ID_ATM_Sheet name</small> <b>FRAME-R-UB-DU-NG-3.0_A07.0</b>	<small>REVISION</small> <b>A</b>
<small>645 WEST 200 NORTH - NORTH SALT LAKE, UTAH 84054</small>		<small>FAX # (801) 936-1563 TELEPHONE # (801) 936-8082</small>		<small>SHEET: 10 of 20</small>



\\385\\sva\\3894\_Engineering\\S\\01\_Fabrication\\Drawings\\3894\_B01A\\B-NG\_Drawing Approval - 78101.CB017  
Printed Date: 2/21/2019



D

C

B

A

\\385\\sa\\3856\_Engineering\\SW\\Fabrication\\Drawings\\3856\_BoA\\UB-NG Drawing Approval - 7800.CERT  
Printed Date: 2/21/2019

6

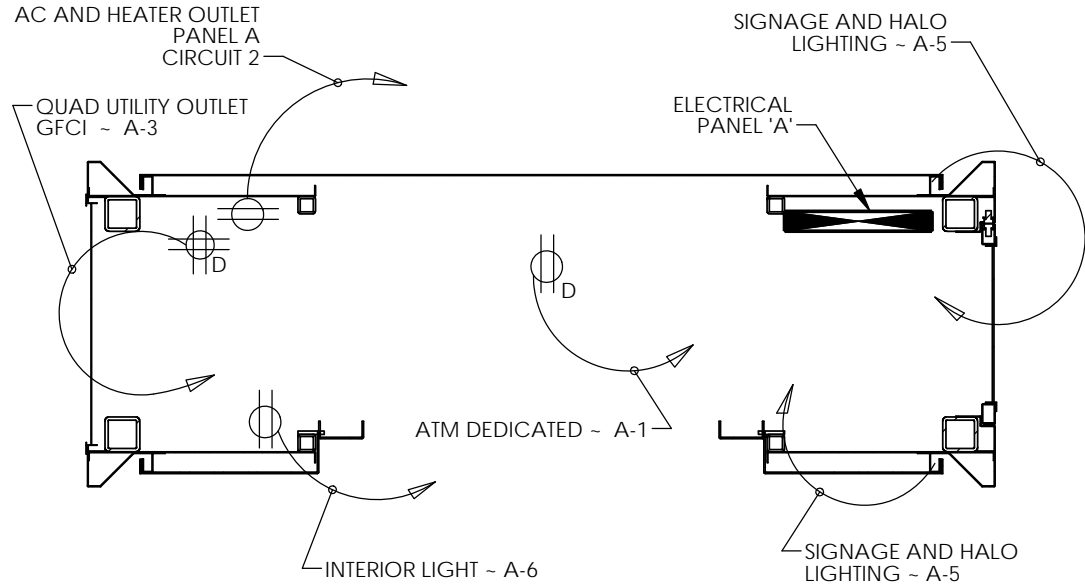
5

4

3

2

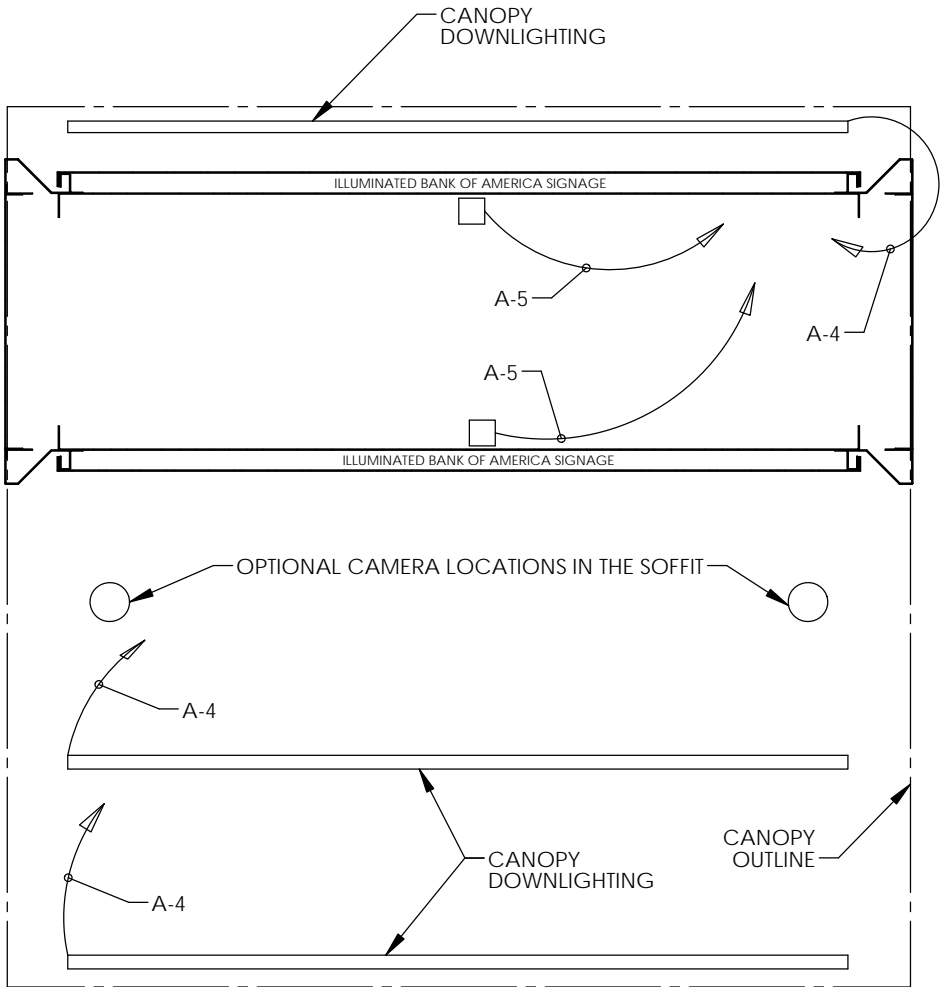
1



### ELECTRICAL POWER PLAN

CIRCUIT #	PANEL 'A' - DESCRIPTION	CALCULATED LOAD & CIRCUIT REQUIRMENTS	BREAKER SIZE
1	DEDICATED ATM	16.0 AMP, 10 ga. - 2 WIRE 120V	30 AMP
2	AC AND HEATER RECEPTACLE	8.0 AMP, 12 ga. - 2 WIRE 120V	20 AMP
3	GENERAL PURPOSE QUAD RECEPTACLE	6.0 AMP, 12 ga. - 2 WIRE 120V	20 AMP
4	EXTERIOR DOWNLIGHTING, AND TIMER	3.0 AMP, 12 ga. - 2 WIRE 120V	20 AMP
5	SIGNAGE AND HALO LIGHTING	5.0 AMP, 12 ga. - 2 WIRE 120V	20 AMP
6	INTERIOR LIGHT	1.20 AMP, 12 ga. - 2 WIRE 120V	20 AMP

ELECTRICAL SYMBOL LEGEND	
	Recessed compact fluorescent downlight. Refer to electrical light schedule (this sheet) for new lighting specifications.
	Surface mounted fluorescent strip light w/nite light function & (2) lamps. Refer to electrical lighting schedule for lighting specifications.
	Nite light
	Standard duplex outlet. 20 amp, 120v, 1ph, grounding type, NEMA 5-15. Locate a min. of 12" a.f.f. unless otherwise noted. No more than 5 outlets per circuit.
	Standard duplex outlet on dedicated circuit, 30 amp, 120v, 1 ph.
	Standard quad outlet on dedicated circuit, 20 amp, 120v, 1 ph.
	Thermostat - locate as shown on electrical power plan. Refer to mechanical drawings for specifications.
	Junction Box
	Lighting Timer
	Modem outlet. Outlet to be mounted @ -84" a.f.f. Refer to electrical power plan (this Sheet) for location.
	Electrical panel board. Refer to sheet E2 for panel board specifications.
	Audible device - Buzzer 70 db @ 10' locate in motor switch box



NOTE: DOWNLIGHTS TO REFLECT A MINIMUM OF 10 FOOT CANDLES @ 5 FOOT IN FRONT OF BUILDING.

### ILLUMINATED SIGNAGE AND CANOPY DOWN LIGHTING PLAN

**ELECTRICAL NOTES:**  
UNLESS OTHERWISE NOTED, ALL LIGHTING FIXTURES AND LAMPS ARE NEW AND ARE FURNISHED AND INSTALLED BY THE KIOSK MANUFACTURER.

ALL LIGHTING FIXTURES SHALL BE FURNISHED COMPLETE WITH ALL LAMPS AND WITH ALL REQUIRED MOUNTING HARDWARE AND ACCESSORIES. IT SHALL BE THE RESPONSIBILITY OF THE KIOSK MANUFACTURER TO DETERMINE THE TYPE OF CONSTRUCTION INTO WHICH EACH FIXTURE WILL BE.

ALL WIRING TO BE COPPER THHN OR THWN INSTALLED IN EMT CONDUIT OR MC TYPE PER NATIONAL ELECTRICAL CODE. NO POWER WIRING SHALL BE SMALLER THAN 12 GA.

BUILDING OWNER IS RESPONSIBLE FOR OBTAINING A FAULT CURRENT STUDY IF REQUIRED BY LOCAL AUTHORITIES.

ALL WIRING, FIXTURES AND EQUIPMENT ARE U.L. LISTED OR LABELED.

SECURITY / ALARM PANEL AND EQUIPMENT INSTALLED BY OTHERS AFTER MAIN INSTALLATION OF KIOSK.

RECEPTACLES MOUNTED TO EXTERIOR WALLS REQUIRE GFCI RECEPTACLES.

UNLESS OTHERWISE SPECIFIED DIMENSIONS ARE IN INCHES AND TOLERANCES ARE: FRACTION = ±1/32 3 DECIMAL = ±.005 2 DECIMAL = ±.01 ANGLE = ±.5				Customer ID_ATM_Sheet name		REVISION
APPROVALS		DATE		Electrical Specifications, Lighting, Symbols & Notes		
ENGINEERED: JJH		02/22/19		SHEET SIZE		
DRAWN: JJH		02/22/19		B		
CHECKED: BH		02/22/19		THIRD ANGLE PROJECTION		
SCALE = 1:22		DO NOT SCALE		FRAME-R-UB-DU-NG-3.0_E1		A
645 WEST 200 NORTH - NORTH SALT LAKE, UTAH 84054		FAX # (801) 936-1563		TELEPHONE # (801) 936-8082		SHEET: 12 of 20

THE INFORMATION CONTAINED IN THIS DRAWING IS THE SOLE PROPERTY OF COMPANION SYSTEMS. ANY REPRODUCTION IN PART OR WHOLE WITHOUT THE WRITTEN PERMISSION OF COMPANION SYSTEMS IS PROHIBITED.

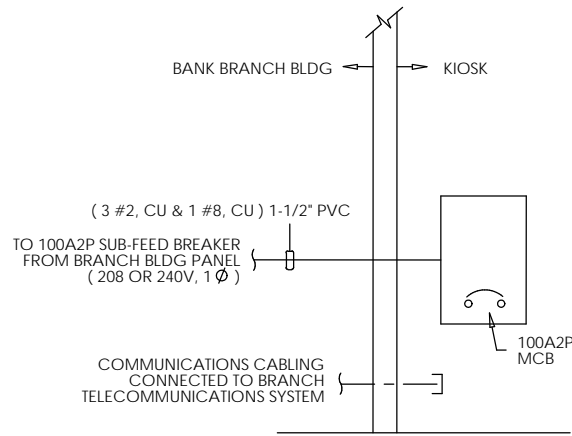
D

C

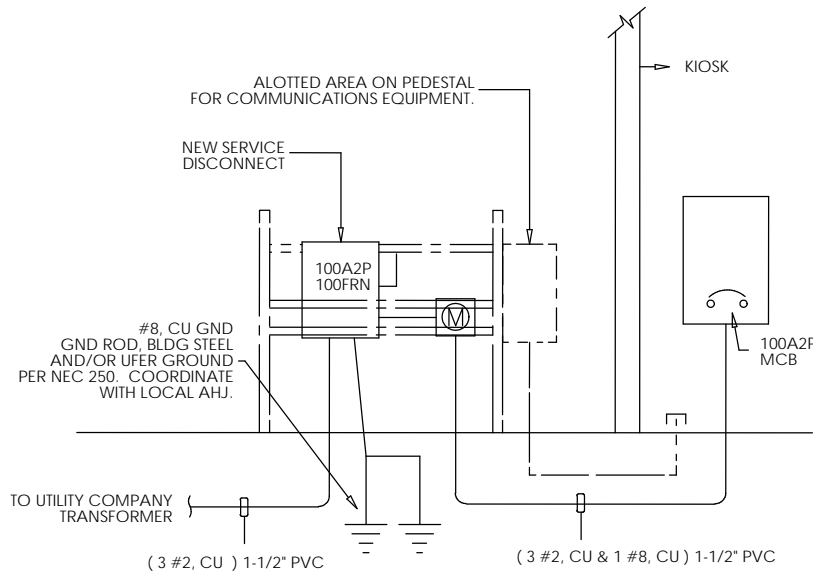
B

A

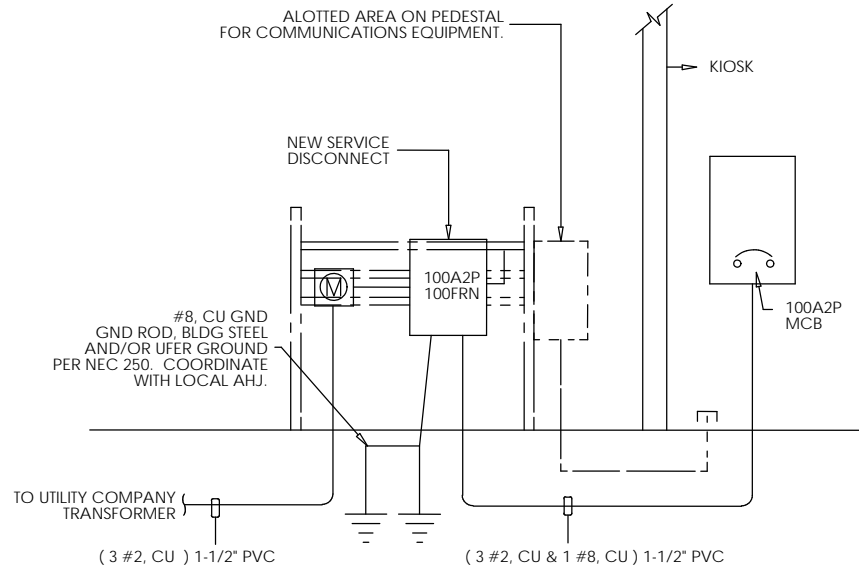
I:\35\96\3596\_Engineering\SWI Fabrication\Drawings\3596\_BofA\UB-NG Drawing Approval - 7800.CBVT  
Printed Date: 2/21/2019



**SERVICE OPTION 1**



**SERVICE OPTION 2**



**SERVICE OPTION 3**

**ELECTRICAL SERVICE OPTIONS:**

**SERVICE OPTION 1:**

UTILIZE THIS OPTION FOR KIOSK POWER FEED FROM AN EXISTING BANK BRANCH BUILDING. CONTRACTOR SHALL FIELD-COORDINATE WITH BANK OF AMERICA AND BRANCH MANAGER TO DETERMINE BEST LOCATION TO FEED NEW 100A, 208 OR 240V, SINGLE PHASE ELECTRICAL FEED TO PANEL INTEGRAL TO KIOSK. EXISTING BRANCH PANEL MUST BE ABLE TO ACCOMMODATE NEW 60A2P CIRCUIT BREAKER. ABOVE GRADE CONDUIT ROUTING MUST NOT BE EXPOSED AND SHALL BE APPROVED FOR SECURITY PURPOSES WITH BANK OF AMERICA.

**SERVICE OPTION 2:**

UTILIZE THIS OPTION FOR FREE-STANDING KIOSKS FED FROM A PAD-MOUNTED UTILITY COMPANY TRANSFORMER. ADDITIONALLY THIS OPTION SHALL BE USED FOR UTILITY JURISDICTIONS THAT REQUIRE "COLD-SEQUENCED" ( METER DOWNSTREAM OF DISCONNECT ) FUSE AND METER CONFIGURATION. ALL SERVICE GEAR SHALL BE MOUNTED TO A FREE-STANDING PRESSURE TREATED WOOD PEDESTAL, CONSTRUCTED AND PLACED PER BANK OF AMERICA STANDARDS. ELECTRICAL CONTRACTOR SHALL FIELD COORDINATE WITH LOCAL UTILITY COMPANY FOR SERVICE FEEDERS AND SPECIFIC REQUIREMENTS PRIOR TO WORK.

**SERVICE OPTION 3:**

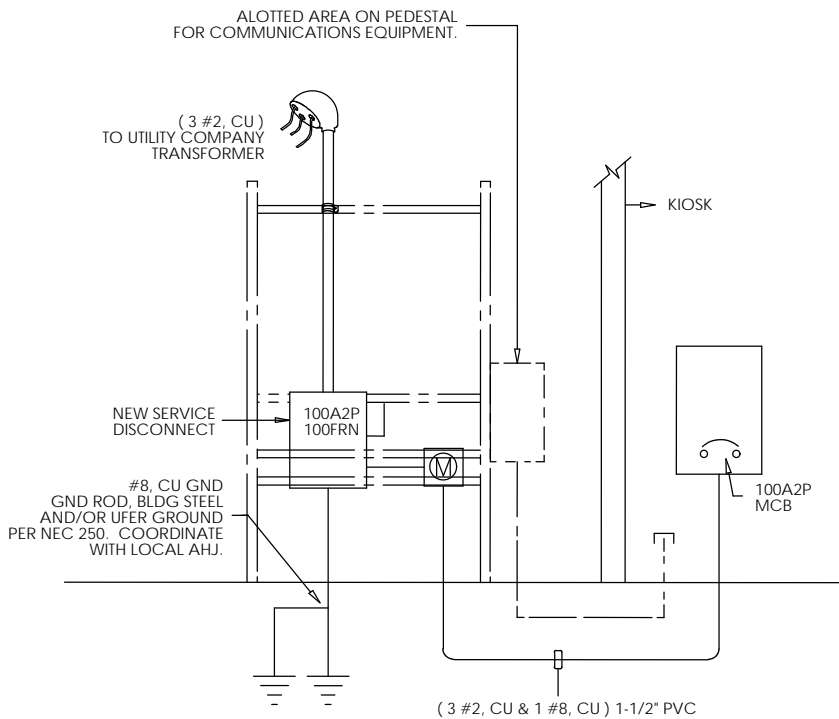
THIS OPTION SHALL ENCOMPASS THE SAME REQUIREMENTS OF OPTION 2, WITH THE EXCEPTION OF THE FUSE AND METER CONFIGURATION. THIS OPTION SHALL BE UTILIZED IN UTILITY JURISDICTIONS REQUIRING "HOT-SEQUENCED" ( METER UPSTREAM OF DISCONNECT ) FUSE AND METER CONFIGURATION.

**SERVICE OPTION 4:**

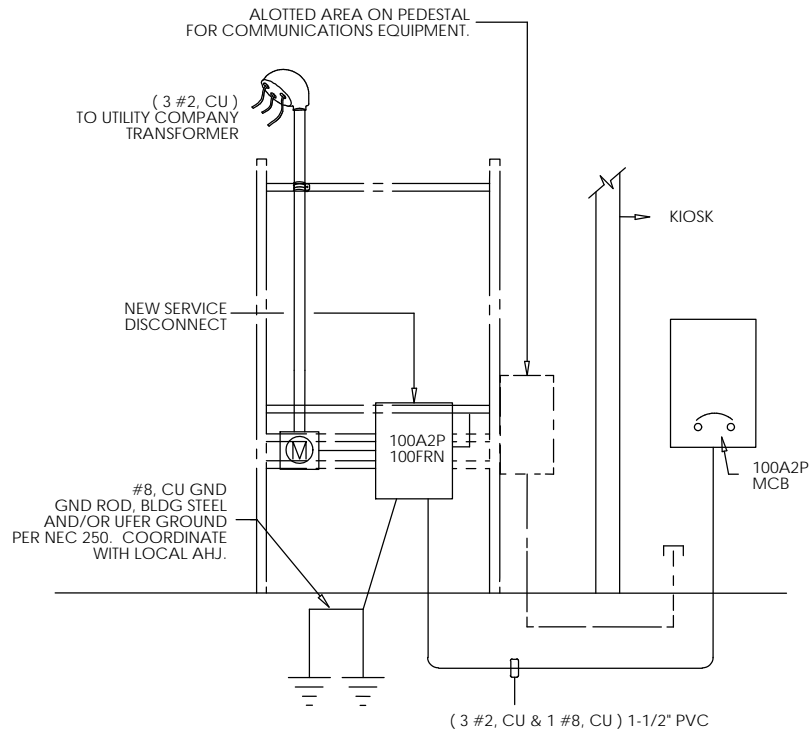
UTILIZE THIS OPTION FOR FREE-STANDING KIOSKS FED FROM A POLE-MOUNTED UTILITY COMPANY TRANSFORMER. ADDITIONALLY THIS OPTION SHALL BE USED FOR UTILITY JURISDICTIONS THAT REQUIRE "COLD-SEQUENCED" ( METER DOWNSTREAM OF DISCONNECT ) FUSE AND METER CONFIGURATION. ALL SERVICE GEAR SHALL BE MOUNTED TO A FREE-STANDING PRESSURE TREATED WOOD OR UNISTRUT PEDESTAL, CONSTRUCTED AND PLACED PER BANK OF AMERICA STANDARDS. ELECTRICAL CONTRACTOR SHALL FIELD COORDINATE WITH LOCAL UTILITY COMPANY FOR SERVICE FEEDERS AND SPECIFIC REQUIREMENTS PRIOR TO WORK.

**SERVICE OPTION 5:**



THIS OPTION SHALL ENCOMPASS THE SAME REQUIREMENTS OF OPTION 2, WITH THE EXCEPTION OF THE FUSE AND METER CONFIGURATION. THIS OPTION SHALL BE UTILIZED IN UTILITY JURISDICTIONS REQUIRING "HOT-SEQUENCED" ( METER UPSTREAM OF DISCONNECT ) FUSE AND METER CONFIGURATION.

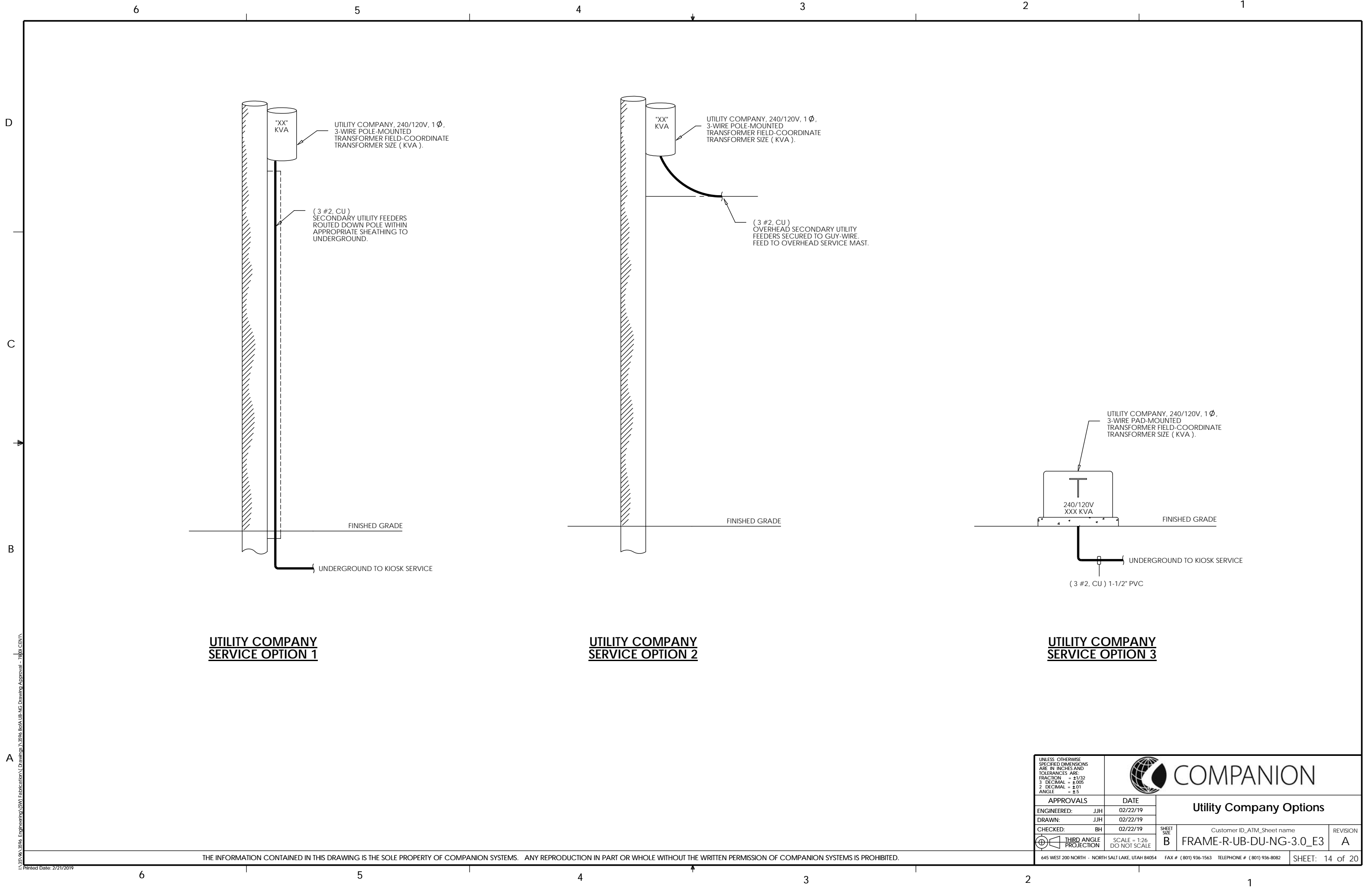


**SERVICE OPTION 4**



**SERVICE OPTION 5**

UNLESS OTHERWISE SPECIFIED DIMENSIONS ARE IN INCHES AND TOLERANCES ARE: FRACTION = ±1/32 3 DECIMAL = ±.005 2 DECIMAL = ±.01 ANGLE = ±.5		 <b>COMPANION</b>		<b>Electrical Service options</b>	
APPROVALS		DATE		<b>Customer ID_ATM_Sheet name</b> <b>FRAME-R-UB-DU-NG-3.0_E2</b>	
ENGINEERED: JJH		02/22/19			
DRAWN: JJH		02/22/19			
CHECKED: BH		02/22/19			
 <b>THIRD ANGLE PROJECTION</b>		SCALE = 1:26 DO NOT SCALE		<b>SHEET SIZE</b> <b>B</b>	<b>REVISION</b> <b>A</b>
645 WEST 200 NORTH - NORTH SALT LAKE, UTAH 84054 FAX # (801) 936-1563 TELEPHONE # (801) 936-8082					
SHEET: 13 of 20					




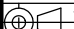
\\385va\3856\_Engineering\SW Fabrication\Drawings\3856\_BoA\UB-NG Drawing Approval - 7800.cdw

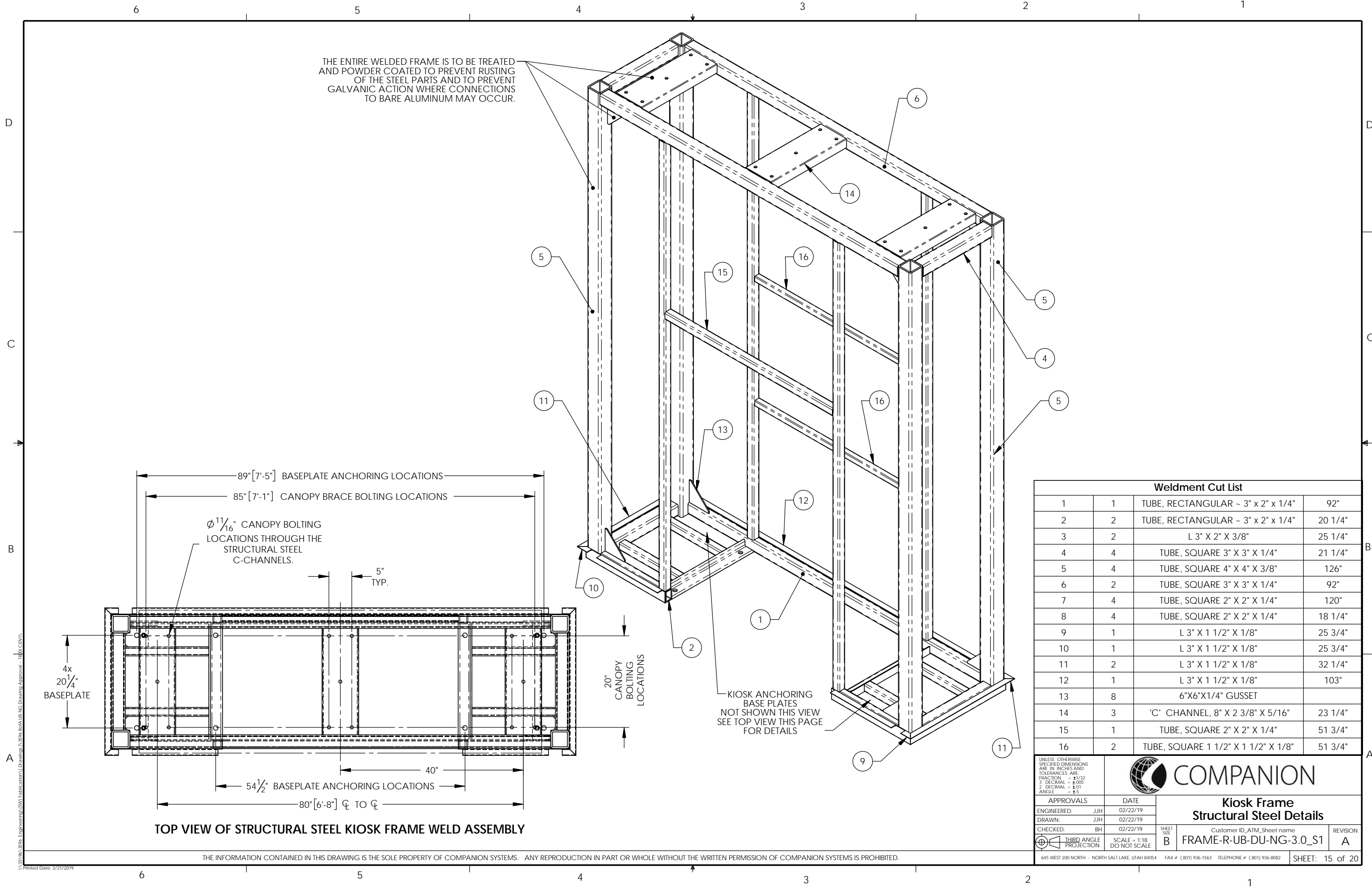
Printed Date: 2/21/2019

UTILITY COMPANY  
SERVICE OPTION 1

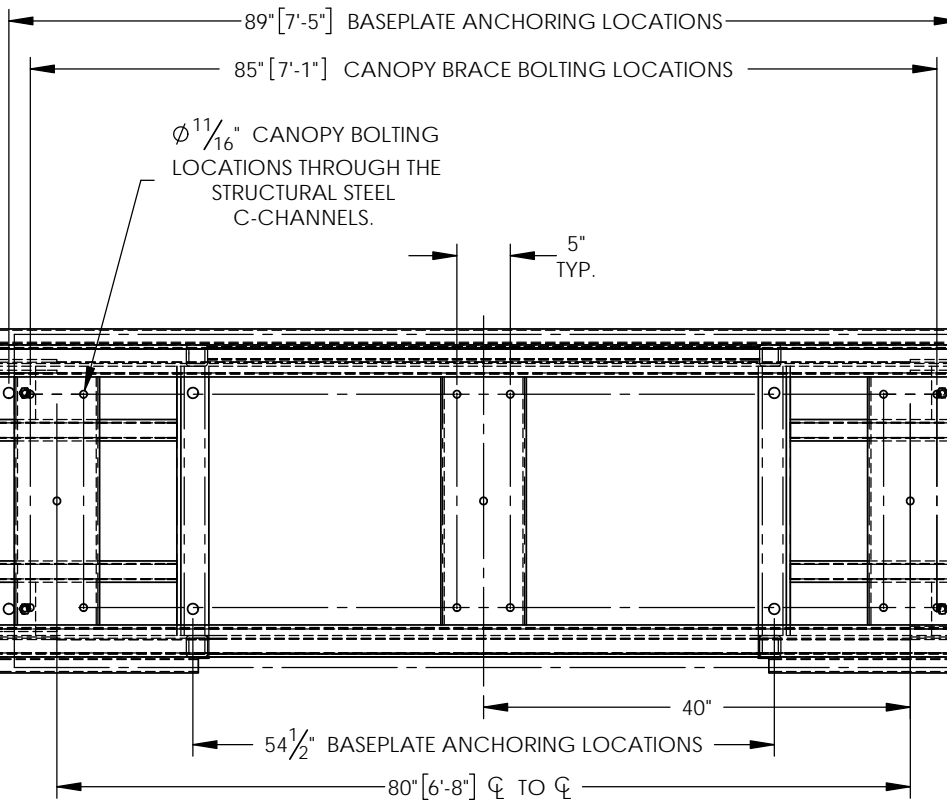
UTILITY COMPANY  
SERVICE OPTION 2

UTILITY COMPANY  
SERVICE OPTION 3

UNLESS OTHERWISE SPECIFIED DIMENSIONS ARE IN INCHES AND TOLERANCES ARE: FRACTION = ±1/32 3 DECIMAL = ±.005 2 DECIMAL = ±.01 ANGLE = ±.5		 <b>COMPANION</b>	
APPROVALS		DATE	
ENGINEERED: JJH		02/22/19	
DRAWN: JJH		02/22/19	
CHECKED: BH		02/22/19	
 THIRD ANGLE PROJECTION		SHEET SIZE <b>B</b>	Customer ID_ATM_Sheet name <b>FRAME-R-UB-DU-NG-3.0_E3</b>
645 WEST 200 NORTH - NORTH SALT LAKE, UTAH 84054		REVISION <b>A</b>	
FAX # (801) 936-1563 TELEPHONE # (801) 936-8082		SHEET: 14 of 20	




THE ENTIRE WELDED FRAME IS TO BE TREATED AND POWDER COATED TO PREVENT RUSTING OF THE STEEL PARTS AND TO PREVENT GALVANIC ACTION WHERE CONNECTIONS TO BARE ALUMINUM MAY OCCUR.



TOP VIEW OF STRUCTURAL STEEL KIOSK FRAME WELD ASSEMBLY

Weldment Cut List			
1	1	TUBE, RECTANGULAR ~ 3" x 2" x 1/4"	92"
2	2	TUBE, RECTANGULAR ~ 3" x 2" x 1/4"	20 1/4"
3	2	L 3" X 2" X 3/8"	25 1/4"
4	4	TUBE, SQUARE 3" X 3" X 1/4"	21 1/4"
5	4	TUBE, SQUARE 4" X 4" X 3/8"	126"
6	2	TUBE, SQUARE 3" X 3" X 1/4"	92"
7	4	TUBE, SQUARE 2" X 2" X 1/4"	120"
8	4	TUBE, SQUARE 2" X 2" X 1/4"	18 1/4"
9	1	L 3" X 1 1/2" X 1/8"	25 3/4"
10	1	L 3" X 1 1/2" X 1/8"	25 3/4"
11	2	L 3" X 1 1/2" X 1/8"	32 1/4"
12	1	L 3" X 1 1/2" X 1/8"	103"
13	8	6"X6"X1/4" GUSSET	
14	3	'C' CHANNEL, 8" X 2 3/8" X 5/16"	23 1/4"
15	1	TUBE, SQUARE 2" X 2" X 1/4"	51 3/4"
16	2	TUBE, SQUARE 1 1/2" X 1 1/2" X 1/8"	51 3/4"

UNLESS OTHERWISE SPECIFIED DIMENSIONS ARE IN INCHES AND TOLERANCES ARE:  
FRACTION = +1/32  
3 DECIMAL = +.005  
2 DECIMAL = +.01  
ANGLE = +.5

 **COMPANION**

APPROVALS		DATE
ENGINEERED:	JJH	02/22/19
DRAWN:	JJH	02/22/19
CHECKED:	BH	02/22/19

THIRD ANGLE PROJECTION	SCALE = 1:18 DO NOT SCALE	SHEET SIZE <b>B</b>
------------------------	------------------------------	------------------------

**Kiosk Frame  
Structural Steel Details**

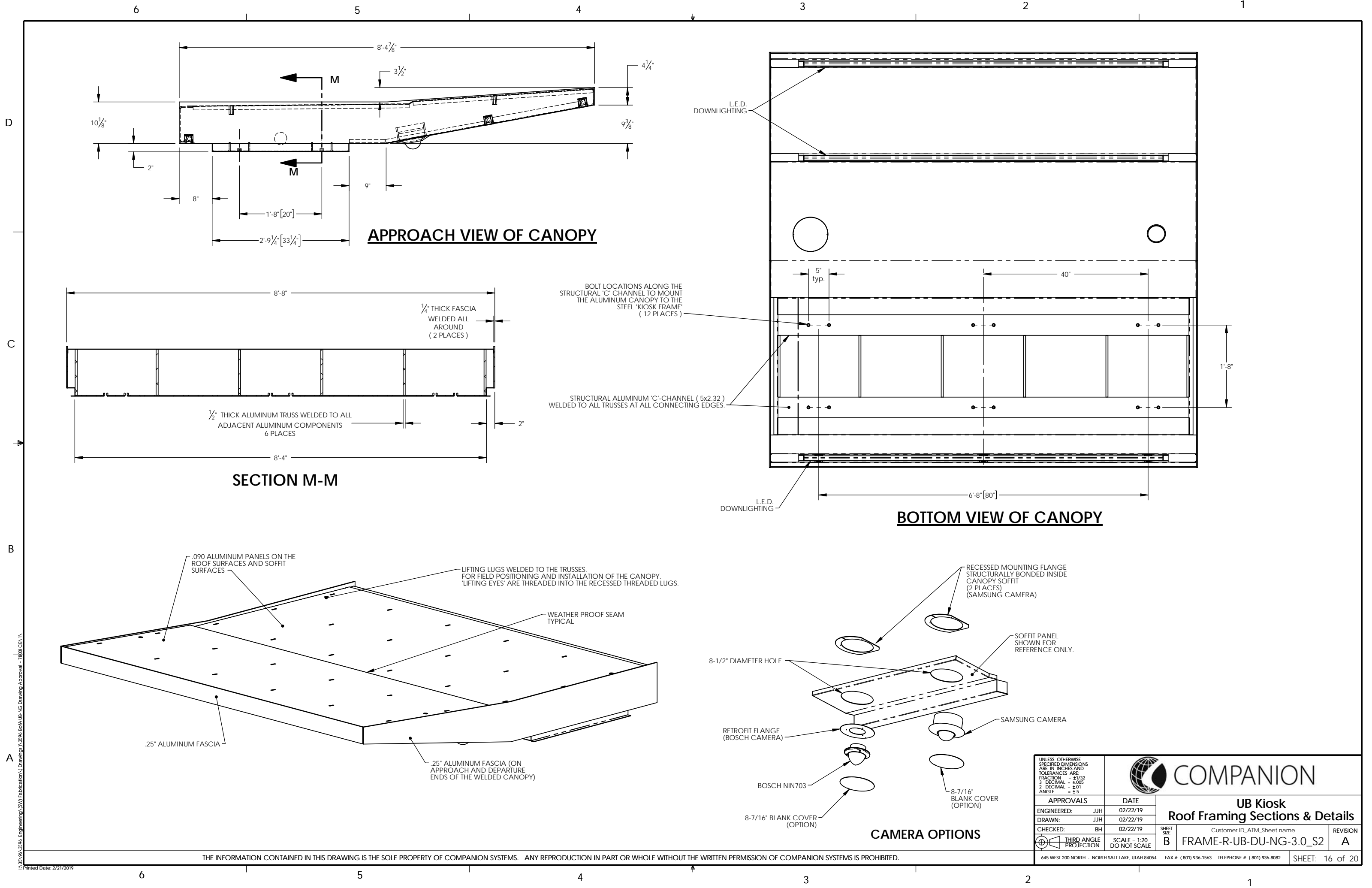
Customer ID\_ATM\_Sheet name  
**FRAME-R-UB-DU-NG-3.0\_S1**

REVISION  
**A**

645 WEST 200 NORTH - NORTH SALT LAKE, UTAH 84054

FAX # (801) 936-1563 TELEPHONE # (801) 936-8082

SHEET: 15 of 20

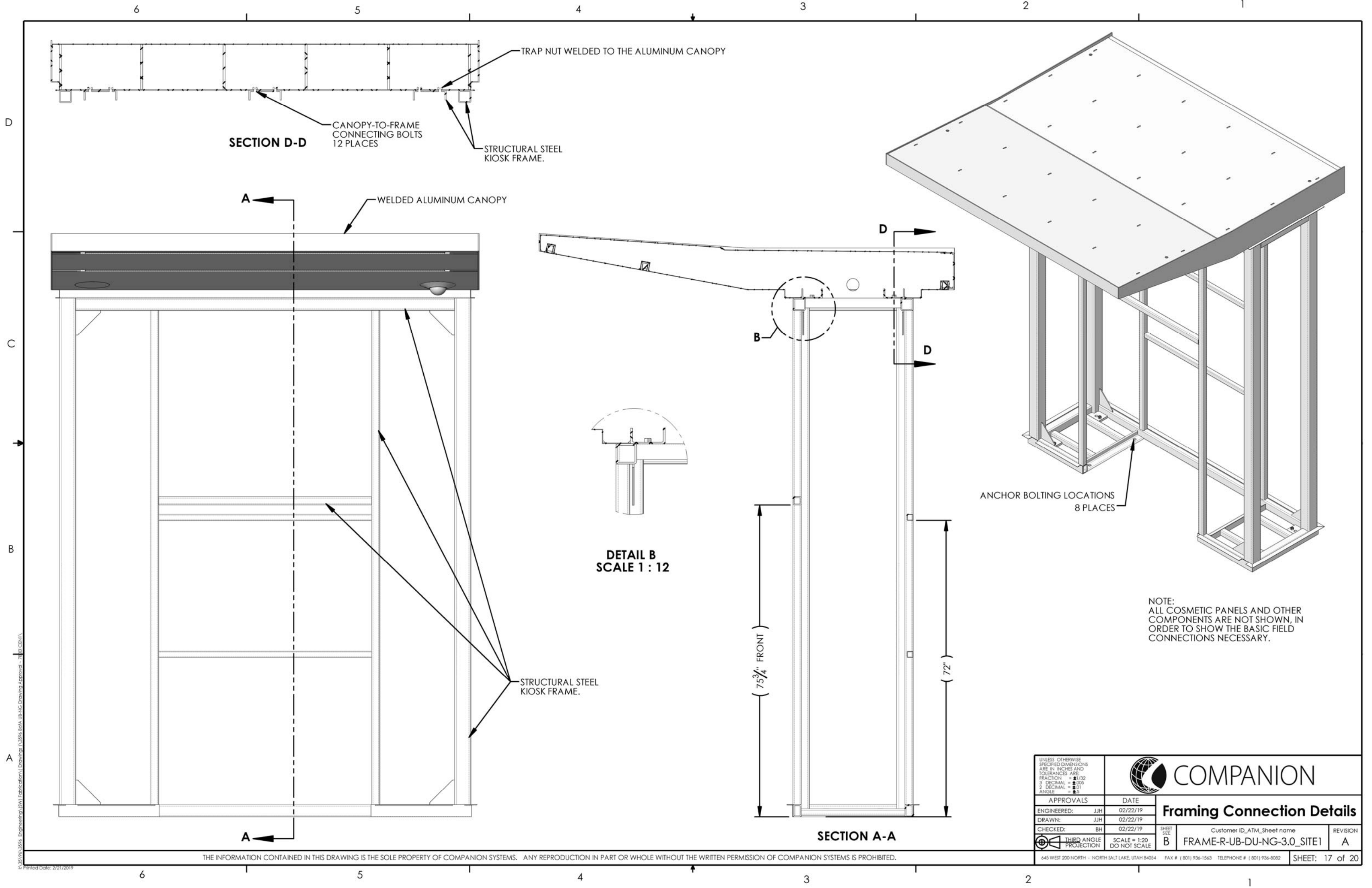


\\385\\sa\\3856 Engineering\\SWI Fabrication\\Drawings\\3856 BofA UB-NG Drawing Approval - 78801 CEN17  
Printed Date: 2/21/2019

THE INFORMATION CONTAINED IN THIS DRAWING IS THE SOLE PROPERTY OF COMPANION SYSTEMS. ANY REPRODUCTION IN PART OR WHOLE WITHOUT THE WRITTEN PERMISSION OF COMPANION SYSTEMS IS PROHIBITED.

<small>UNLESS OTHERWISE SPECIFIED DIMENSIONS ARE IN INCHES AND TOLERANCES ARE: FRACTION = ±1/32 3 DECIMAL = ±.005 2 DECIMAL = ±.01 ANGLE = ±.5</small>				
<b>APPROVALS</b>		<b>DATE</b>		
ENGINEERED: JJH	02/22/19	<b>UB Kiosk</b> <b>Roof Framing Sections &amp; Details</b> <small>Customer ID_ATM_Sheet name</small> <b>FRAME-R-UB-DU-NG-3.0_S2</b>		
DRAWN: JJH	02/22/19			
CHECKED: BH	02/22/19			
	THIRD ANGLE PROJECTION	SCALE = 1:20 DO NOT SCALE	<small>SHEET SIZE</small> <b>B</b>	<small>REVISION</small> <b>A</b>
645 WEST 200 NORTH - NORTH SALT LAKE, UTAH 84054		FAX # (801) 936-1563 TELEPHONE # (801) 936-8082		SHEET: 16 of 20

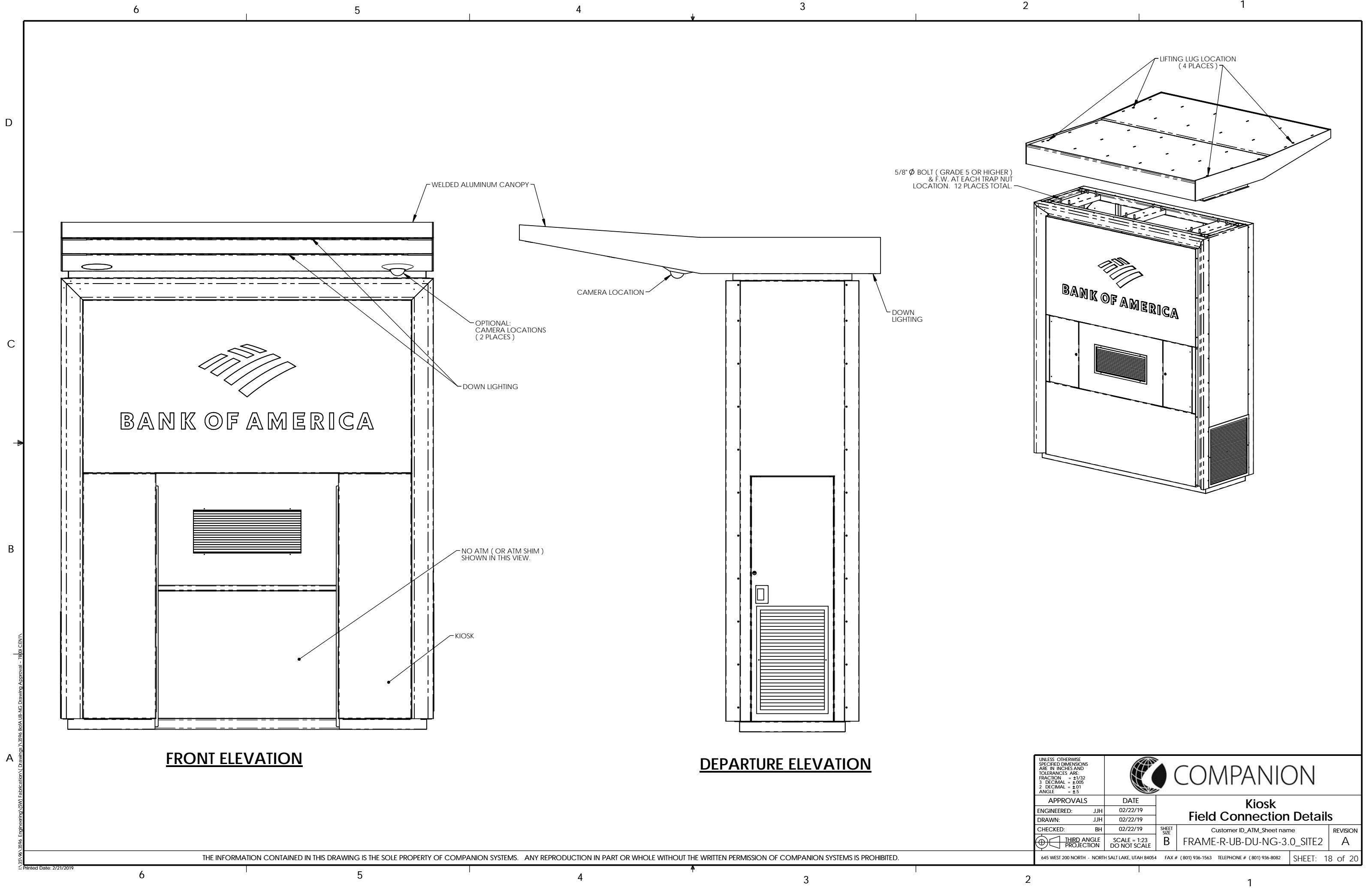


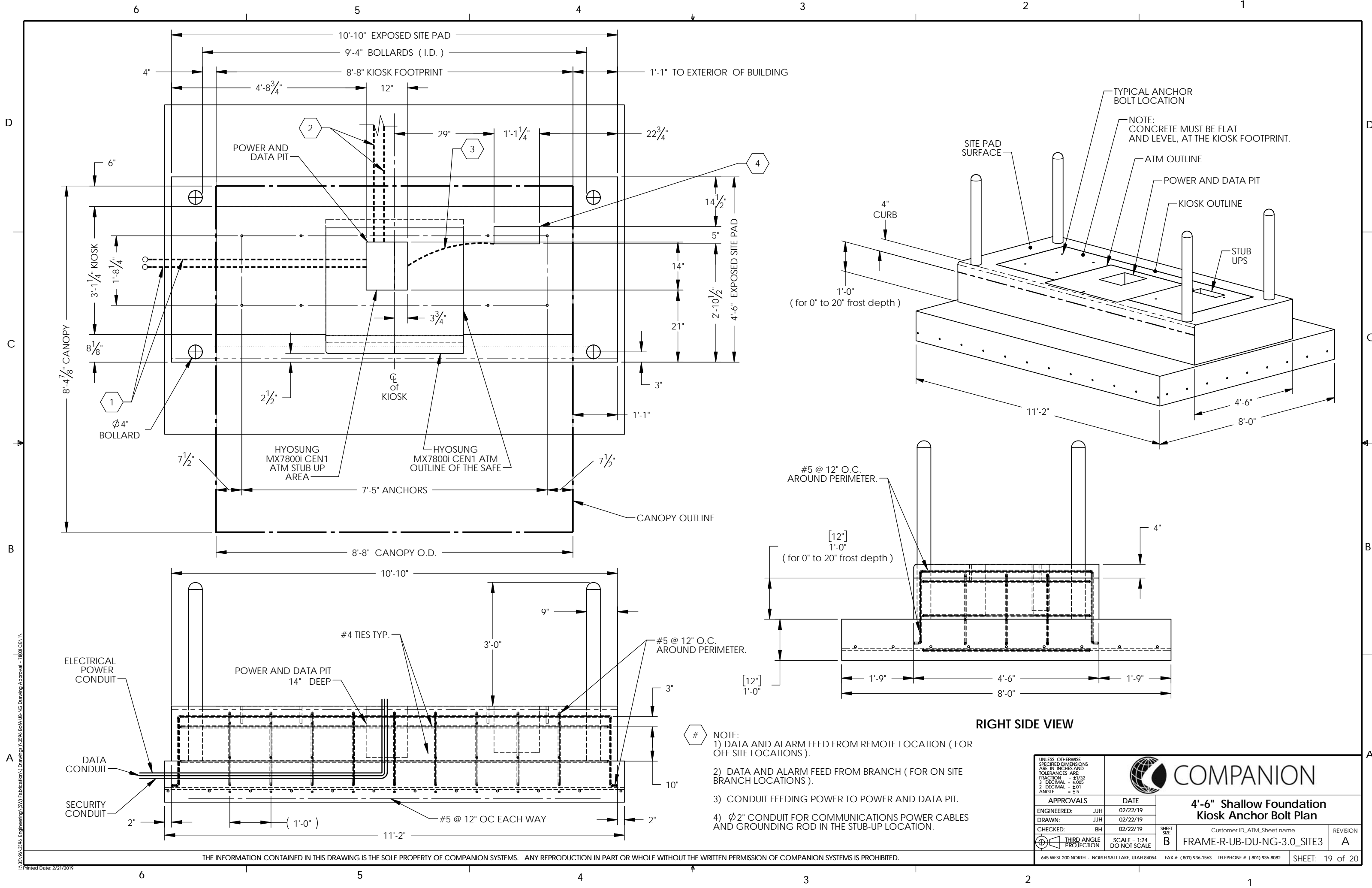


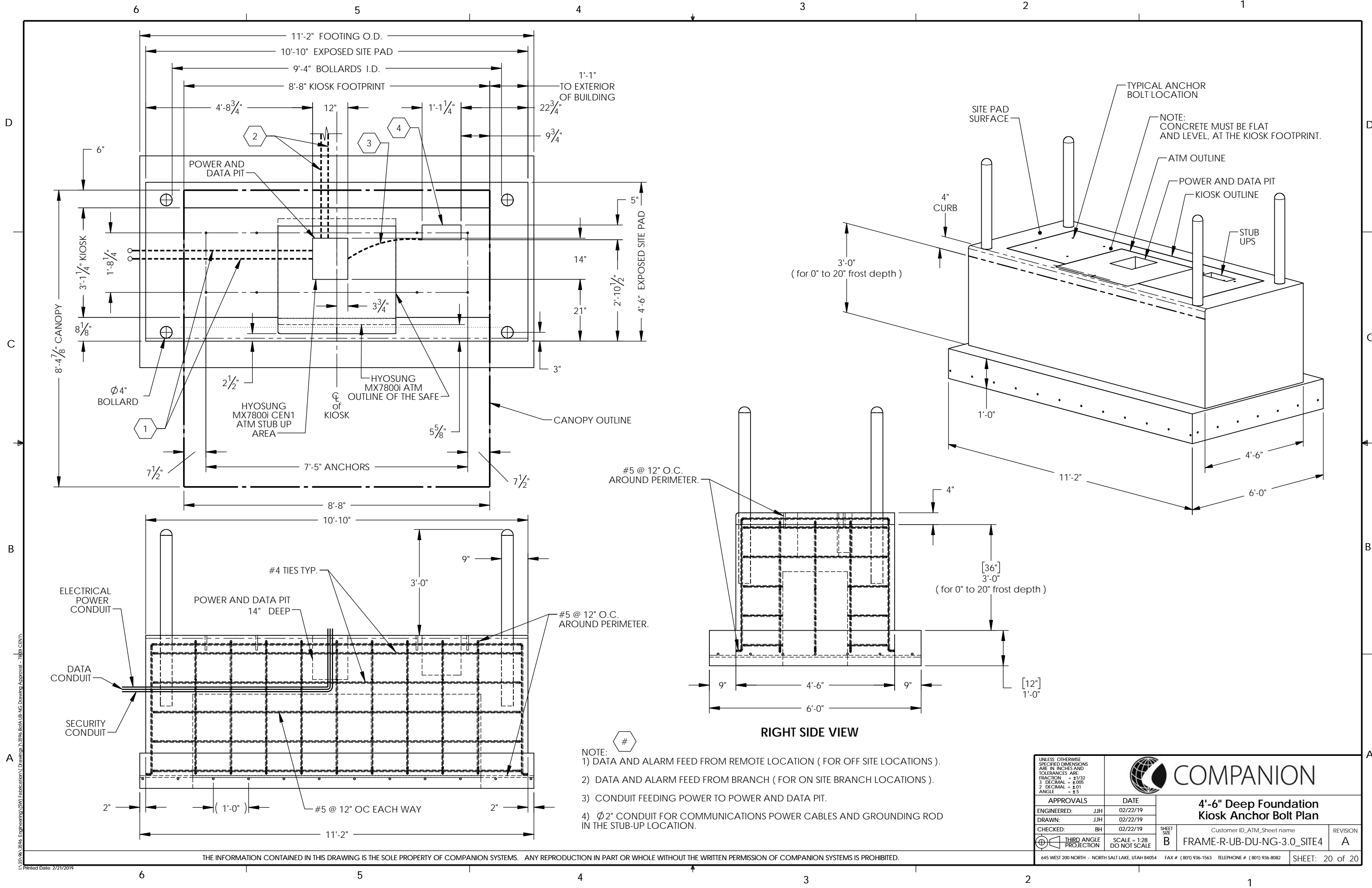
I:\30\VA\3094\_Engineering\3094 Fabrication\Drawings\3094 BOLA IJB-NG Drawing Approval - 7800 CBM11  
Printed Date: 2/21/2019

THE INFORMATION CONTAINED IN THIS DRAWING IS THE SOLE PROPERTY OF COMPANION SYSTEMS. ANY REPRODUCTION IN PART OR WHOLE WITHOUT THE WRITTEN PERMISSION OF COMPANION SYSTEMS IS PROHIBITED.

<small>UNLESS OTHERWISE SPECIFIED DIMENSIONS ARE IN INCHES AND TOLERANCES ARE: FRACTION ± 1/32 3 DECIMAL ± 0.005 2 DECIMAL ± 0.01 ANGLE ± 1.5</small>					
APPROVALS		DATE			
ENGINEERED: JJH	02/22/19	<b>Framing Connection Details</b>			
DRAWN: JJH	02/22/19				
CHECKED: BH	02/22/19				
THIRD ANGLE PROJECTION		SCALE = 1:20 DO NOT SCALE	SHEET SIZE: B	Customer ID_ATM_Sheet name FRAME-R-UB-DU-NG-3.0_SITE1	REVISION A
645 WEST 200 NORTH - NORTH SALT LAKE, UTAH 84054 FAX # (801) 936-1563 TELEPHONE # (801) 936-8082					









\\385\\sa\\3856\\Engineering\\SW\\Fabrication\\Drawings\\3856\\BoFA\\UB-NG Drawing Approval - 78801 CEN1  
Printed Date: 2/21/2019

- NOTE:
- 1) DATA AND ALARM FEED FROM REMOTE LOCATION ( FOR OFF SITE LOCATIONS ).
  - 2) DATA AND ALARM FEED FROM BRANCH ( FOR ON SITE BRANCH LOCATIONS ).
  - 3) CONDUIT FEEDING POWER TO POWER AND DATA PIT.
  - 4) Ø2" CONDUIT FOR COMMUNICATIONS POWER CABLES AND GROUNDING ROD IN THE STUB-UP LOCATION.

UNLESS OTHERWISE SPECIFIED DIMENSIONS ARE IN INCHES AND TOLERANCES ARE: FRACTION = ±1/32 3 DECIMAL = ±.005 2 DECIMAL = ±.01 ANGLE = ±.5		 <b>COMPANION</b>	
APPROVALS		DATE	
ENGINEERED: JJH		02/22/19	
DRAWN: JJH		02/22/19	
CHECKED: BH		02/22/19	
 THIRD ANGLE PROJECTION		SCALE = 1:28 DO NOT SCALE	
SHEET SIZE <b>B</b>		Customer ID_ATM_Sheet name <b>FRAME-R-UB-DU-NG-3.0_SITE4</b>	
645 WEST 200 NORTH - NORTH SALT LAKE, UTAH 84054 FAX # (801) 936-1563 TELEPHONE # (801) 936-8082		REVISION <b>A</b>	
SHEET: 20 of 20			