

Plan View: Phase 1, E. Taunton Avenue
scale: 1 inch = 20 feet

QUANTITIES FOR STATION 6+25± TO STATION 10+00

| | |
|----------|------------|
| ITEM 6: | 63 C.Y. |
| ITEM 10: | 1,430 S.Y. |
| ITEM 11: | 143 GALS. |
| ITEM 13: | 190 TONS |
| ITEM 14: | 70 TONS |
| ITEM 17: | 200 S.Y. |
| ITEM 18: | 273 L.F. |
| ITEM 30: | 1 UNIT |
| ITEM 31: | 1 UNIT |
| ITEM 33: | 100 S.Y. |
| ITEM 6: | 275 L.F. |
| ITEM C: | 200 S.Y. |

Legend:

- HMA, MILLING VARIES, 0"-3" THICK
- TACK COAT, GRADE CRS-1H
- HOT MIX ASPHALT, 9.5M64 LEVELING COURSE
- HOT MIX ASPHALT, 25M64 SURFACE COURSE, 2" THICK
- HOT MIX ASPHALT, 25M64 SURFACE COURSE, 5" THICK
- EXCAVATION, UNCLASSIFIED
- TACK COAT, GRADE CRS-1H
- HOT MIX ASPHALT, 9.5M64 SURFACE COURSE, 2" THICK
- HOT MIX ASPHALT, 25M64 SURFACE COURSE, 5" THICK
- SUBSURFACE STRUCTURE EXCAVATION
- TACK COAT, GRADE CRS-1H
- HOT MIX ASPHALT, 9.5M64 SURFACE COURSE, 2" THICK
- HOT MIX ASPHALT, 25M64 SURFACE COURSE, 5" THICK
- EXCAVATION, UNCLASSIFIED
- CONCRETE GUTTER, REINFORCED, 8" THICK, CLASS 'V' WITH WELDED WIRE MESH 6"x6"x1/4"x1/4", DENSE GRADED AGGREGATE SUBBASE, 6" THICK AND SOIL STABILIZATION FABRIC
- CONCRETE SIDEWALK AND CURB RAMP, 4" THICK, CLASS 'B'
- CONCRETE DRIVEWAY APRON/ SIDEWALK, 6" THICK, CLASS 'B'
- TOPSOIL, 5" THICK AND SOODING

List of Quantities:
Roadway Improvements to E. Taunton Avenue, Phase 1, from - to Station 19+35±
Payment Items:

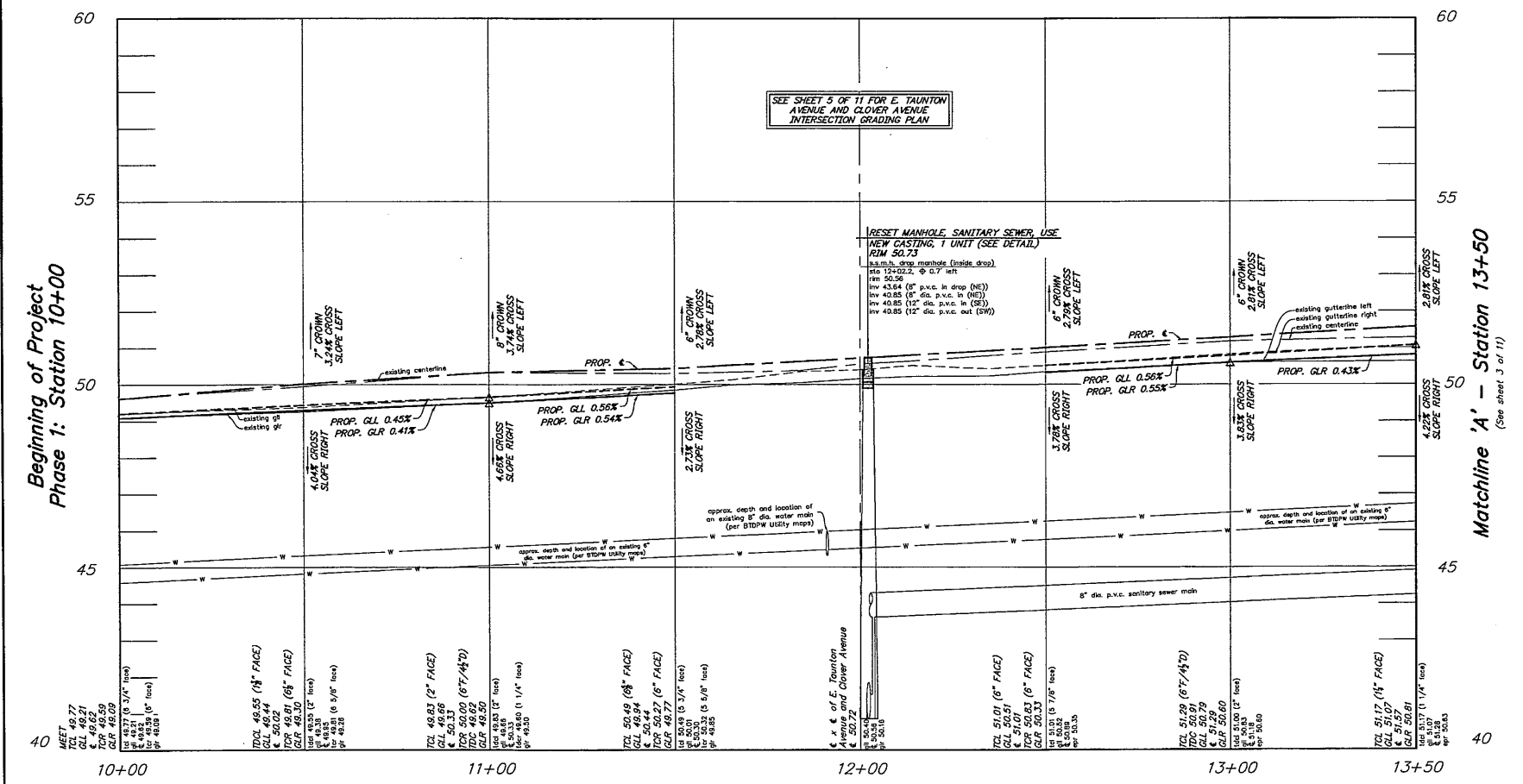
| ITEM No. | DESCRIPTION | UNITS | SHEET 1 |
|----------|--|--------|---------|
| 1 | CONCRETE WASHOUT SYSTEM | L.S. | L.S. |
| 2 | BREAKAWAY BARRICADE | UNIT | 20 |
| 3 | DRUM | UNIT | 30 |
| 4 | TRAFFIC CONE | UNIT | 100 |
| 5 | CONSTRUCTION SIGN | S.F. | 231.5 |
| 6 | FUEL PRICE ADJUSTMENT | DOLLAR | - |
| 7 | ASPHALT PRICE ADJUSTMENT | DOLLAR | - |
| 8 | CLEARING SITE | L.S. | L.S. |
| 9 | EXCAVATION, UNCLASSIFIED | C.Y. | 240 |
| 10 | HMA, MILLING VARIES, 0"-3" THICK | S.Y. | 2,705 |
| 11 | TACK COAT, GRADE CRS-1H | GALS. | 315 |
| 12 | HOT MIX ASPHALT, 9.5M64 LEVELING COURSE | TONS | 90 |
| 13 | HOT MIX ASPHALT, 9.5M64 SURFACE COURSE, 2" THICK | TONS | 390 |
| 14 | HOT MIX ASPHALT, 25M64 SURFACE COURSE, 5" THICK | TONS | 200 |
| 15 | CONCRETE GUTTER, REINFORCED, 8" THICK, CLASS 'V' WITH WELDED WIRE MESH 6"x6"x1/4"x1/4", DENSE GRADED AGGREGATE SUBBASE, 6" THICK AND SOIL STABILIZATION FABRIC | S.Y. | 80 |
| 16 | CONCRETE SIDEWALK, 4" THICK, CLASS 'B' | S.Y. | 100 |
| 17 | CONCRETE DRIVEWAY APRON/ SIDEWALK, 6" THICK, CLASS 'B' | S.Y. | 235 |
| 18 | DETECTABLE WARNING SURFACE | S.F. | 16 |
| 19 | 6"x8"x18" CONCRETE CURB, CLASS 'B' | L.F. | 530 |
| 28 | RESET MANHOLE, SANITARY SEWER, USE NEW CASTING | UNITS | 1 |
| 29 | CLEAR WOODED AREA | L.S. | L.S. |
| 30 | TREE REMOVAL, 18" DIA. | UNIT | 1 |
| 31 | TREE REMOVAL, 36" DIA. | UNIT | 1 |
| 32 | TREE, 2" TO 2-1/2" CAL., B&B, 8'-10" HIGH | UNIT | 2 |
| 33 | TOPSOIL, 5" THICK AND SOODING | S.Y. | 380 |

Clearing Site Items:

| ITEM No. | CLEARING SITE ITEMS | UNITS | SHEET 1 |
|----------|--|-------|---------|
| A | SAWCUT BITUMINOUS PAVEMENT | L.F. | 1120 |
| B | REMOVE CONCRETE CURB | L.F. | 530 |
| C | REMOVE CONCRETE DRIVEWAY APRON/ SIDEWALK | S.Y. | 235 |
| D | REMOVE CONCRETE SIDEWALK AND CURB RAMP | S.Y. | 100 |
| E | REMOVE SIGN | UNITS | 0 |
| F | RESET GAS VALVE BOX | UNITS | 3 |
| G | RESET DRIVEWAY STONE | S.F. | 0 |
| H | RESET SIGN | UNITS | 1 |
| J | RESET WATER VALVE BOX | UNITS | 1 |
| J | JOINT SEALER | L.F. | 96 |
| K | N.J.D.O.T. CIVIL RIGHTS SIGN | UNITS | 1 |

Driveway Apron Schedule

| ADDRESS | EXISTING WIDTH | PROPOSED WIDTH (FULL DEPRESSION) | EXISTING SLOPE | PROPOSED SLOPE |
|------------------------|----------------|----------------------------------|----------------|----------------|
| #132 E. TAUNTON AVENUE | 14.6'± | 15.0' | 6.6%± | |
| #203 E. TAUNTON AVENUE | 19.7'± | 19.7' | 9.9%± | 4.0% |



Profile: Phase 1, E. Taunton Avenue
scale: horizontal: 1 inch = 20 feet
vertical: 1 inch = 2 feet



Know what's below
Call before you dig.

BENCHMARK:
FOUND REBAR WITH V&I CAP LOCATED BETWEEN LOT NUMBERS 130 E. TAUNTON AND 132 E. TAUNTON ASSUMED ELEV. 48.91

REPRODUCTION, ALTERATION AND AMENDMENT OF THIS PLAN SHALL BE PERFORMED ONLY BY KEY ENGINEERS, INC. AND SHALL BE PERFORMED UNDER THE ABSOLUTE DIRECTION OF THE LICENSED PROFESSIONAL WHOSE NAME AND SIGNATURE APPEARS HEREON.

| REV. | DATE | DESCRIPTION | DRWN. | CHKD. |
|---|------------------|-------------|-------------------|-------|
| Construction Plan | | | | |
| Roadway Improvements to E. Taunton Avenue from - to Station 19+35± Station 10+00 to Station 13+50 | | | | |
| Township of Berlin Camden County, New Jersey | | | | |
| DATE: February 27, 2026 | DRAWN BY: S.H. | CHKD. BY: | SCALE: AS NOTED | |
| PROJECT No. 29-572 | FIELD BOOK/PAGE: | | SHEET No. 2 OF 11 | |

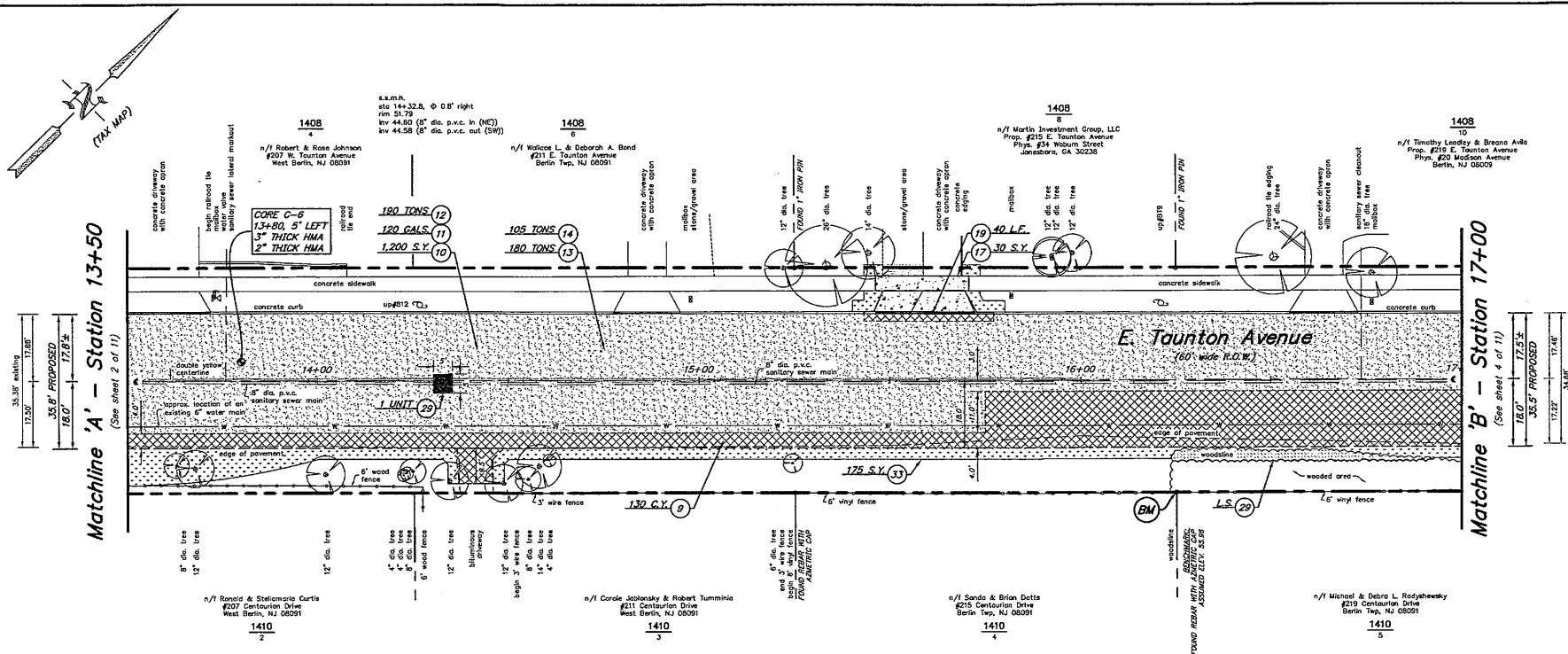
GREGORY BLASE FUSCO
PROFESSIONAL ENGINEER

N.J.P.E. No. 32853 PA.P.E. No. 036608-E
NJ PROFESSIONAL PLANNER No. 4076

KEY ENGINEERS, INC.

80 S. WHITE HORSE PIKE
BERLIN, NEW JERSEY 08009-2399
CERTIFICATE OF AUTHORIZATION #24GA28041300

DATE: 2-27-26



- Legend:**
- HMA MILLING VARIES, 0"-3" THICK
 - TACK COAT, GRADE CRS-1H
 - HOT MIX ASPHALT, 9.5M64 LEVELING COURSE
 - HOT MIX ASPHALT, 9.5M64 SURFACE COURSE, 2" THICK
 - HOT MIX ASPHALT, 25M64 BASE COURSE, 5" THICK
 - EXCAVATION, UNCLASSIFIED
 - TACK COAT, GRADE CRS-1H
 - HOT MIX ASPHALT, 9.5M64 SURFACE COURSE, 2" THICK
 - HOT MIX ASPHALT, 25M64 BASE COURSE, 5" THICK
 - SUBSURFACE STRUCTURE EXCAVATION
 - TACK COAT, GRADE CRS-1H
 - HOT MIX ASPHALT, 9.5M64 SURFACE COURSE, 2" THICK
 - HOT MIX ASPHALT, 25M64 BASE COURSE, 5" THICK
 - CONCRETE SIDEWALK AND CURB RAMP, 4" THICK, CLASS 'B'
 - CONCRETE DRIVEWAY APRON/ SIDEWALK, 6" THICK, CLASS 'B'
 - TOPSOIL, 5" THICK AND SODDING

List of Quantities:
Roadway Improvements to E. Taunton Avenue, Phase 1, from - to Station 19+35±

| ITEM No. | DESCRIPTION | UNITS | SHEET 2 |
|----------|--|--------|---------|
| 1 | CONCRETE WASHOUT SYSTEM | L.S. | L.S. |
| 2 | BREAKAWAY BARRICADE | UNIT | 0 |
| 3 | DRUM | UNIT | 0 |
| 4 | TRAFFIC CONE | UNIT | 0 |
| 5 | CONSTRUCTION SIGN | S.F. | 0 |
| 6 | FUEL PRICE ADJUSTMENT | DOLLAR | - |
| 7 | ASPHALT PRICE ADJUSTMENT | DOLLAR | - |
| 8 | CLEARING SITE | L.S. | L.S. |
| 9 | EXCAVATION, UNCLASSIFIED | C.Y. | 130 |
| 10 | HMA MILLING VARIES, 0"-3" THICK | S.Y. | 1,200 |
| 11 | TACK COAT, GRADE CRS-1H | GALS. | 120 |
| 12 | HOT MIX ASPHALT, 9.5M64 LEVELING COURSE | TONS | 180 |
| 13 | HOT MIX ASPHALT, 9.5M64 SURFACE COURSE, 2" THICK | TONS | 180 |
| 14 | HOT MIX ASPHALT, 25M64 BASE COURSE, 5" THICK | TONS | 105 |
| 15 | CONCRETE GUTTER, REINFORCED, 6" THICK, CLASS 'V' WITH WELDED WIRE MESH 6"x6"x1/4"x1/4", DENSE GRADED AGGREGATE SUBBASE, 6" THICK AND SOIL STABILIZATION FABRIC | S.Y. | 0 |
| 16 | CONCRETE SIDEWALK, 4" THICK, CLASS 'B' | S.Y. | 0 |
| 17 | CONCRETE DRIVEWAY APRON/ SIDEWALK, 6" THICK, CLASS 'B' | S.Y. | 30 |
| 18 | DETECTABLE WARNING SURFACE | S.F. | 0 |
| 19 | 6"x8"x18" CONCRETE CURB, CLASS 'B' | L.F. | 40 |
| 20 | RESET MANHOLE, SANITARY SEWER, USE NEW CASTING | UNITS | 1 |
| 29 | CLEAR WOODED AREA | L.S. | L.S. |
| 30 | TREE REMOVAL, 18" DIA. | UNIT | 0 |
| 31 | TREE REMOVAL, 36" DIA. | UNIT | 0 |
| 32 | TREE, 2" TO 2-1/2" CAL., B&B, 8'-10' HIGH | UNIT | 0 |
| 33 | TOPSOIL, 5" THICK AND SODDING | S.Y. | 175 |

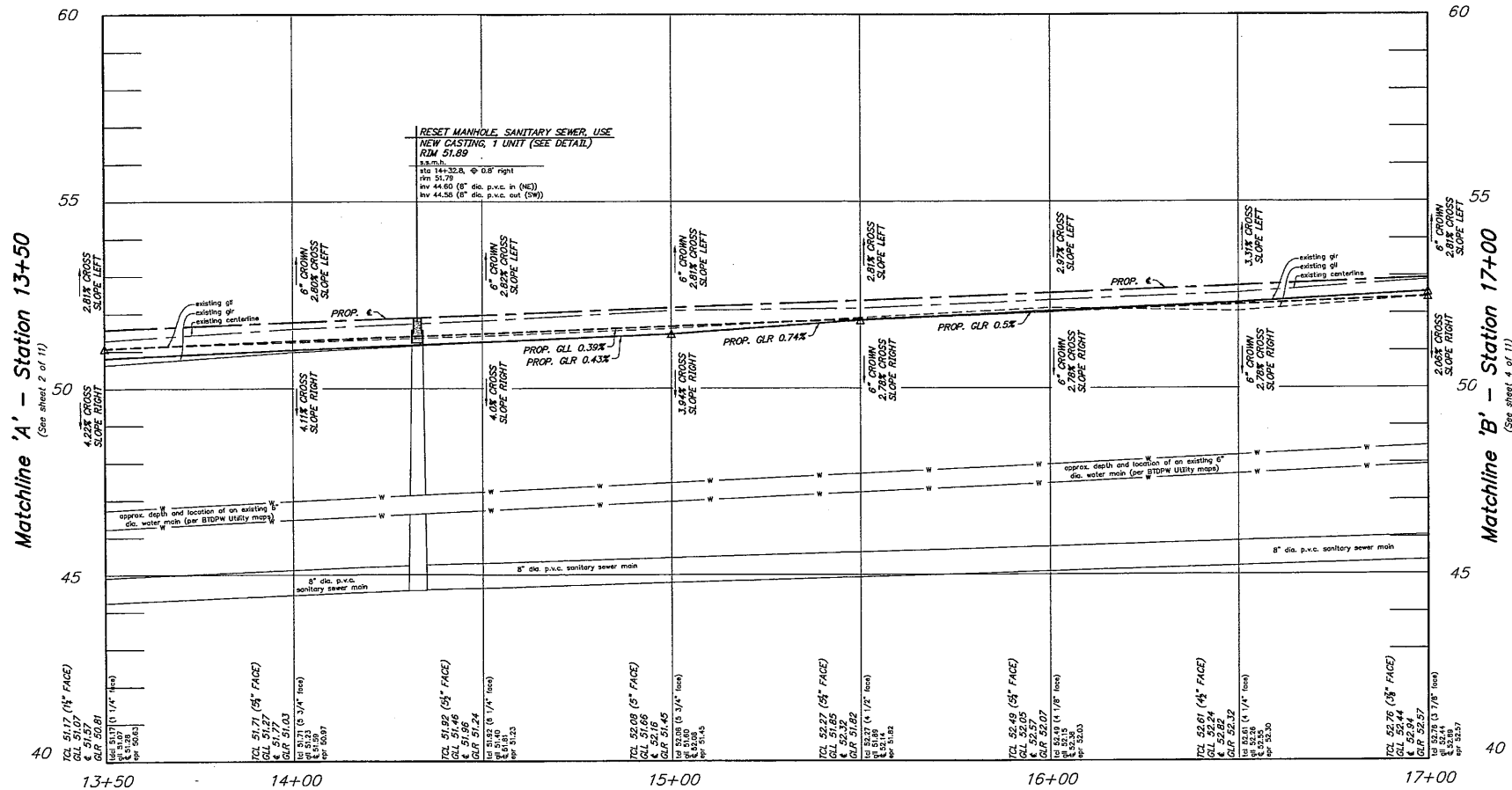
Clearing Site Items:

| ITEM No. | CLEARING SITE ITEMS | UNITS | SHEET 2 |
|----------|--|-------|---------|
| A | SAWCUT BITUMINOUS PAVEMENT | L.F. | 450 |
| B | REMOVE CONCRETE CURB | L.F. | 40 |
| C | REMOVE CONCRETE DRIVEWAY APRON/ SIDEWALK | S.Y. | 20 |
| D | REMOVE CONCRETE SIDEWALK AND CURB RAMP | S.Y. | 4 |
| E | REMOVE SIGN | UNITS | 0 |
| F | RESET GAS VALVE BOX | UNITS | 0 |
| G | RESET DRIVEWAY STONE | S.F. | 36 |
| H | RESET SIGN | UNITS | 0 |
| I | RESET WATER VALVE BOX | UNITS | 0 |
| J | JOINT SEALER | L.F. | 10 |
| K | N.J.D.O.T. CIVIL RIGHTS SIGN | UNITS | 0 |

Driveway Apron Schedule

| ADDRESS | EXISTING WIDTH | PROPOSED WIDTH (FULL DEPRESSION) | EXISTING SLOPE | PROPOSED SLOPE |
|------------------------|----------------|----------------------------------|----------------|----------------|
| #211 CENTAURIAN DRIVE | 8.8' | 14.8' | 9.9% | 10.8% |
| #215 E. TAUNTON AVENUE | 16.7± | 26.0' | 6.61% | 5.7% |

Profile: Phase 1, E. Taunton Avenue
scale: 1 inch = 20 feet



Profile: Phase 1, E. Taunton Avenue
scale: horizontal: 1 inch = 20 feet
vertical: 1 inch = 2 feet



Know what's below
Call before you dig.

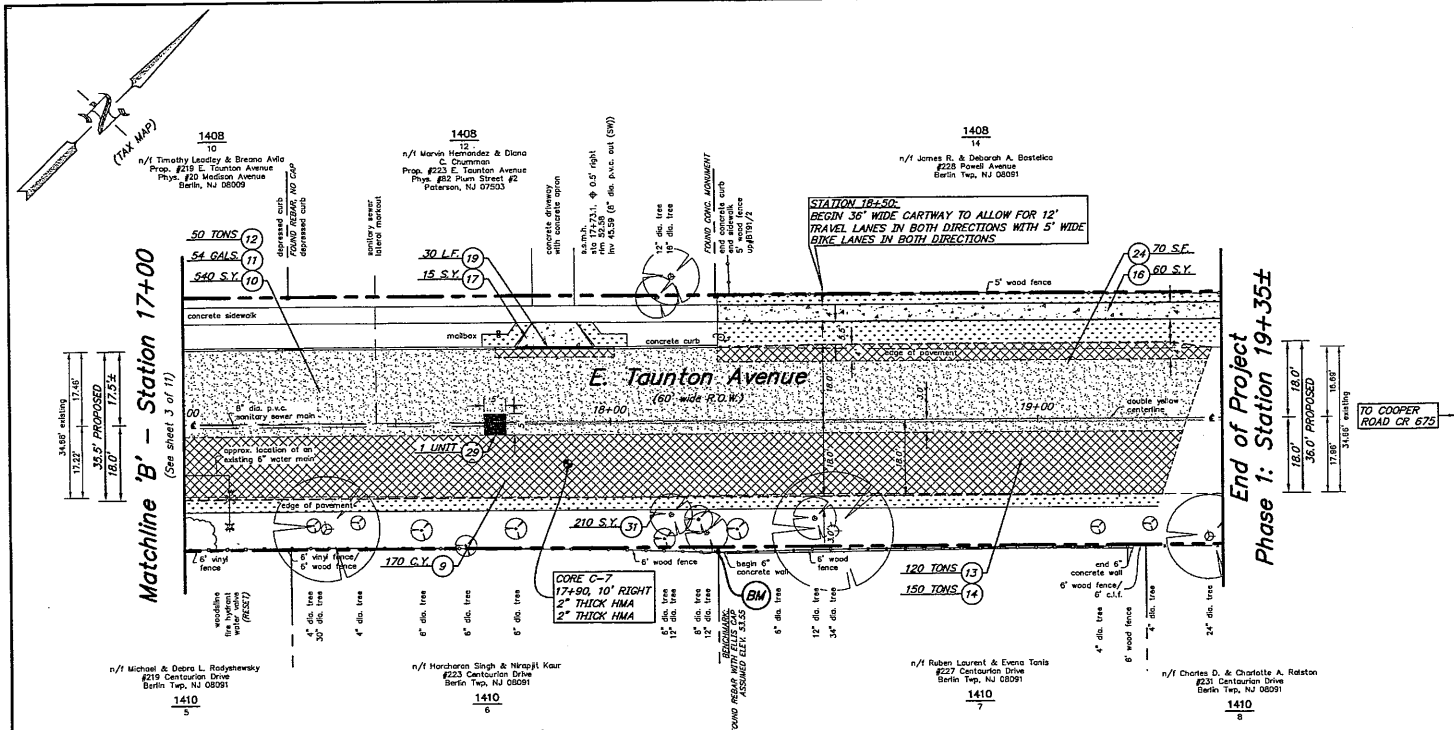
BENCHMARK: FOUND REBAR WITH AZIMUTHIC CAP LOCATED BETWEEN LOT NUMBERS 215 CENTAURIAN DRIVE AND 219 CENTAURIAN DRIVE ASSUMED ELEV. 55.98
REPRODUCTION, ALTERATION AND AMENDMENT OF THIS PLAN SHALL BE PERFORMED ONLY BY KEY ENGINEERS, INC. AND SHALL BE PERFORMED UNDER THE ABSOLUTE DIRECTION OF THE LICENSED PROFESSIONAL WHOSE NAME AND SIGNATURE APPEARS HEREON.

| REV. | DATE | DESCRIPTION | DRWN. | CHKD. |
|--|------|------------------|-----------|-------------------|
| Construction Plan | | | | |
| Roadway Improvements to E. Taunton Avenue, Phase 1 from - to Station 19+35± Station 13+50 to Station 17+00 | | | | |
| Township of Berlin Camden County, New Jersey | | | | |
| DATE: February 27, 2026 | | DRAWN BY: S.H. | CHKD. BY: | SCALE: AS NOTED |
| PROJECT No. 29-572 | | FIELD BOOK/PAGE: | | SHEET No. 3 OF 11 |

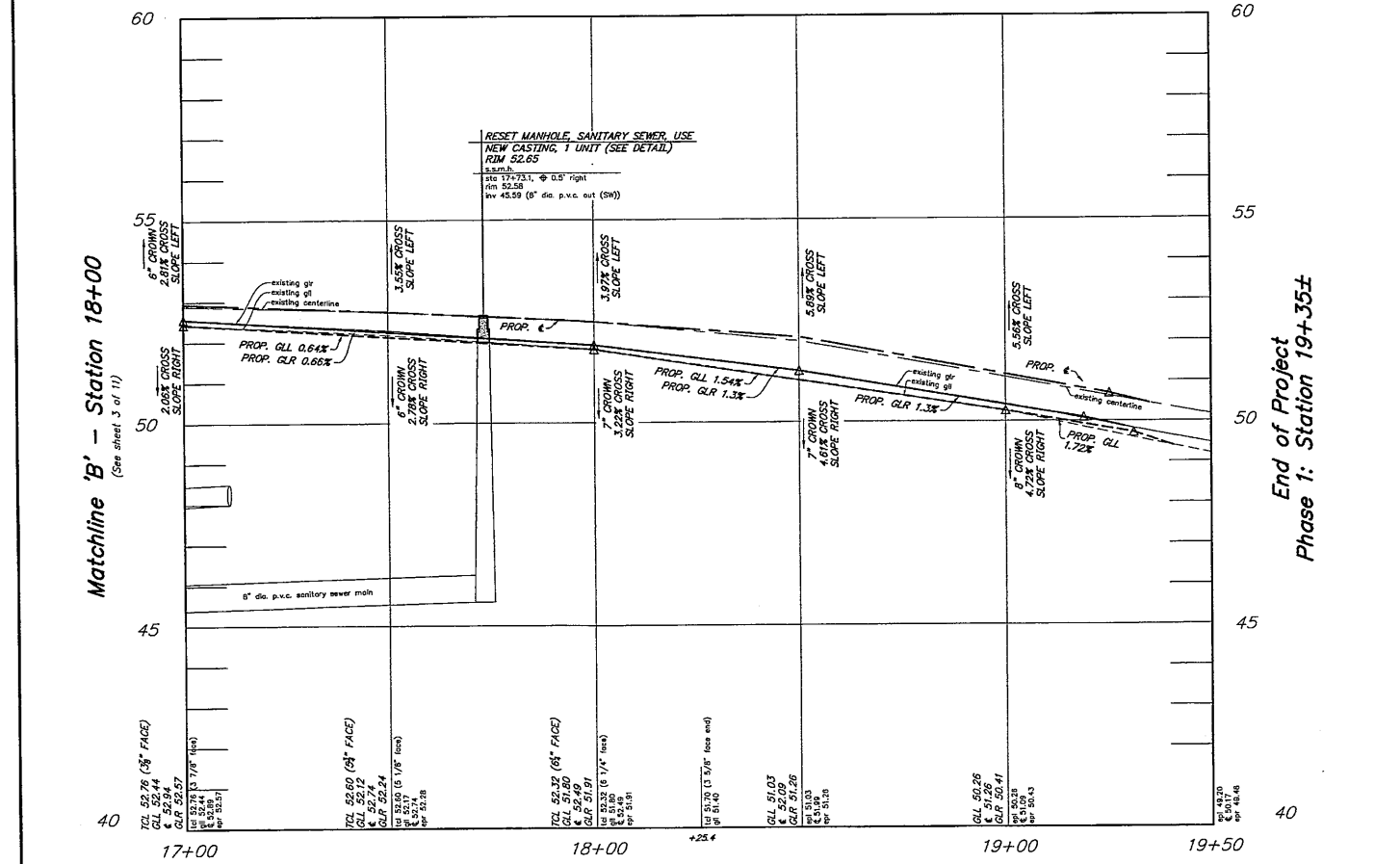
GREGORY BLASE FUSCO
PROFESSIONAL ENGINEER
N.J.P.E. No. 32853 P.A.P.E. No. 036608-E
NJ PROFESSIONAL PLANNER No. 4076

KEY ENGINEERS, INC.
80 S. WHITE HORSE PIKE
BERLIN, NEW JERSEY 08009-2399
Phone: (908) 767-8111
Fax: (908) 763-1081
www.keyengineers.com
CERTIFICATE OF AUTHORIZATION #240A28041300

DATE: 2-27-26



Profile: Phase 1, E. Taunton Avenue
scale: 1 inch = 20 feet



Profile: Phase 1, E. Taunton Avenue
scale: horizontal: 1 inch = 20 feet
vertical: 1 inch = 2 feet

Legend:

- HMA, MILLING VARIES, 0"-3" THICK
- TACK COAT, GRADE CRS-1H
- HOT MIX ASPHALT, 9.5M64 LEVELING COURSE
- HOT MIX ASPHALT, 9.5M64 SURFACE COURSE, 2" THICK
- EXCAVATION, UNCLASSIFIED
- TACK COAT, GRADE CRS-1H
- HOT MIX ASPHALT, 9.5M64 SURFACE COURSE, 2" THICK
- HOT MIX ASPHALT, 25M64 BASE COURSE, 5" THICK
- SUBSURFACE STRUCTURE EXCAVATION
- TACK COAT, GRADE CRS-1H
- HOT MIX ASPHALT, 9.5M64 SURFACE COURSE, 2" THICK
- HOT MIX ASPHALT, 25M64 BASE COURSE, 5" THICK
- CONCRETE SIDEWALK AND CURB RAMP, 4" THICK, CLASS 'B'
- CONCRETE DRIVEWAY APRON/SIDEWALK, 6" THICK, CLASS 'B'
- TOPSOIL, 5" THICK AND SOODING

List of Quantities:
Roadway Improvements to E. Taunton Avenue, Phase 1, from - to Station 19+35±

| ITEM No. | DESCRIPTION | UNITS | SHEET 3 |
|----------|--|--------|---------|
| 1 | CONCRETE WASHOUT SYSTEM | L.S. | L.S. |
| 2 | BREAKAWAY BARRICADE | UNIT | 0 |
| 3 | DRUM | UNIT | 0 |
| 4 | TRAFFIC CONE | UNIT | 0 |
| 5 | CONSTRUCTION SIGN | S.F. | 0 |
| 6 | FUEL PRICE ADJUSTMENT | DOLLAR | - |
| 7 | ASPHALT PRICE ADJUSTMENT | DOLLAR | - |
| 8 | CLEARING SITE | L.S. | L.S. |
| 9 | EXCAVATION, UNCLASSIFIED | C.Y. | 170 |
| 10 | HMA, MILLING VARIES, 0"-3" THICK | S.Y. | 540 |
| 11 | TACK COAT, GRADE CRS-1H | GALS. | 54 |
| 12 | HOT MIX ASPHALT, 9.5M64 LEVELING COURSE | TONS | 50 |
| 13 | HOT MIX ASPHALT, 9.5M64 SURFACE COURSE, 2" THICK | TONS | 120 |
| 14 | HOT MIX ASPHALT, 25M64 BASE COURSE, 5" THICK | TONS | 150 |
| 15 | CONCRETE GUTTER, REINFORCED, 8" THICK, CLASS 'B' WITH WELDED WIRE MESH 6"x6"x1/4" MIN. 4. DENSE GRADED AGGREGATE SUBBASE, 6" THICK AND SOIL STABILIZATION FABRIC | S.Y. | 0 |
| 16 | CONCRETE SIDEWALK, 4" THICK, CLASS 'B' | S.Y. | 60 |
| 17 | CONCRETE DRIVEWAY APRON/ SIDEWALK, 6" THICK, CLASS 'B' | S.Y. | 15 |
| 18 | DETECTABLE WARNING SURFACE | S.F. | 0 |
| 19 | 6"x8"x18" CONCRETE CURB, CLASS 'B' | L.F. | 30 |
| 20 | RESET MANHOLE, SANITARY SEWER, USE NEW CASTING | UNITS | 1 |
| 21 | CLEAR WOODED AREA | L.S. | L.S. |
| 22 | TREE REMOVAL, 18" DIA. | UNIT | 0 |
| 23 | TREE REMOVAL, 36" DIA. | UNIT | 0 |
| 24 | TREE, 2" TO 2-1/2" CAL., B&B, 8'-10' HIGH | UNIT | 0 |
| 25 | TOPSOIL, 5" THICK AND SOODING | S.Y. | 210 |

Clearing Site Items:

| ITEM No. | CLEARING SITE ITEMS | UNITS | SHEET 3 |
|----------|--|-------|---------|
| A | SAWCUT BITUMINOUS PAVEMENT | L.F. | 485 |
| B | REMOVE CONCRETE CURB | L.F. | 30 |
| C | REMOVE CONCRETE DRIVEWAY APRON/ SIDEWALK | S.Y. | 15 |
| D | REMOVE CONCRETE SIDEWALK AND CURB RAMP | S.Y. | 0 |
| E | REMOVE SIGN | UNITS | 0 |
| F | RESET GAS VALVE BOX | UNITS | 0 |
| G | RESET DRIVEWAY STONE | S.F. | 0 |
| H | RESET SIGN | UNITS | 0 |
| I | RESET WATER VALVE BOX | UNITS | 0 |
| J | JOINT SEALER | L.F. | 45 |
| K | N.J.D.O.T. CIVIL RIGHTS SIGN | UNITS | 0 |

Driveway Apron Schedule

| ADDRESS | EXISTING WIDTH | PROPOSED WIDTH (FULL DEPRESSION) | EXISTING SLOPE | PROPOSED SLOPE |
|------------------------|----------------|----------------------------------|----------------|----------------|
| #223 E. TAUNTON AVENUE | 17.8'± | 17.8' | 1.03% | 2.24% |



Know what's below
Call before you dig.

BENCHMARK:
FOUND REBAR WITH ELLIS CAP LOCATED BETWEEN LOT NUMBERS 223 CENTAURIAN DRIVE AND 227 CENTAURIAN DRIVE ASSUMED ELEV. 53.55

REPRODUCTION, ALTERATION AND AMENDMENT OF THIS PLAN SHALL BE PERFORMED ONLY BY KEY ENGINEERS, INC. AND SHALL BE PERFORMED UNDER THE ABSOLUTE DIRECTION OF THE LICENSED PROFESSIONAL WHOSE NAME AND SIGNATURE APPEARS HEREON.

| REV. | DATE | DESCRIPTION | DRWN. | CHKD. |
|---|------|-----------------------|-----------|-------------------|
| Construction Plan | | | | |
| Roadway Improvements to E. Taunton Avenue, Phase 1 from - to Station 19+35± Station 17+00 to Station 19+35± | | | | |
| Township of Berlin Camden County, New Jersey | | | | |
| DATE: February 27, 2028 | | DRAWN BY: S.H. | CHKD. BY: | SCALE: AS NOTED |
| PROJECT No. 29-572 | | FIELD BOOK/PAGE: | | SHEET No. 4 OF 11 |
| GREGORY BLASE FUSCO PROFESSIONAL ENGINEER | | | | |
| N.J.P.E. No. 32853 | | P.A.P.E. No. 036608-E | | |
| NJ PROFESSIONAL PLANNER No. 4076 | | | | |
| | | | | |
| | | | | |